



**HAL**  
open science

## Global marine protected areas do not secure the evolutionary history of tropical corals and fishes

D Mouillot, V Parravicini, David R. Bellwood, F Leprieur, D Huang, P. F. Cowman, C Albouy, Terence P. Hughes, W Thuiller, François Guilhaumon

► **To cite this version:**

D Mouillot, V Parravicini, David R. Bellwood, F Leprieur, D Huang, et al.. Global marine protected areas do not secure the evolutionary history of tropical corals and fishes. *Nature Communications*, 2016, 7, 10.1038/ncomms10359 . hal-01282920

**HAL Id: hal-01282920**

**<https://univ-perp.hal.science/hal-01282920>**

Submitted on 4 Mar 2016

**HAL** is a multi-disciplinary open access archive for the deposit and dissemination of scientific research documents, whether they are published or not. The documents may come from teaching and research institutions in France or abroad, or from public or private research centers.

L'archive ouverte pluridisciplinaire **HAL**, est destinée au dépôt et à la diffusion de documents scientifiques de niveau recherche, publiés ou non, émanant des établissements d'enseignement et de recherche français ou étrangers, des laboratoires publics ou privés.

ARTICLE

Received 18 May 2015 | Accepted 3 Dec 2015 | Published 12 Jan 2016

DOI: 10.1038/ncomms10359

OPEN

# Global marine protected areas do not secure the evolutionary history of tropical corals and fishes

D. Mouillot<sup>1,2</sup>, V. Parravicini<sup>3</sup>, D.R. Bellwood<sup>2</sup>, F. Leprieur<sup>1</sup>, D. Huang<sup>4</sup>, P.F. Cowman<sup>5</sup>, C. Albouy<sup>6</sup>, T.P. Hughes<sup>2</sup>, W. Thuiller<sup>7,8</sup> & F. Guilhaumon<sup>1</sup>

Although coral reefs support the largest concentrations of marine biodiversity worldwide, the extent to which the global system of marine-protected areas (MPAs) represents individual species and the breadth of evolutionary history across the Tree of Life has never been quantified. Here we show that only 5.7% of scleractinian coral species and 21.7% of labrid fish species reach the minimum protection target of 10% of their geographic ranges within MPAs. We also estimate that the current global MPA system secures only 1.7% of the Tree of Life for corals, and 17.6% for fishes. Regionally, the Atlantic and Eastern Pacific show the greatest deficit of protection for corals while for fishes this deficit is located primarily in the Western Indian Ocean and in the Central Pacific. Our results call for a global coordinated expansion of current conservation efforts to fully secure the Tree of Life on coral reefs.

<sup>1</sup>UMR 9190 MARBEC, IRD-CNRS-IFREMER-UM, Université de Montpellier, Montpellier 34095, France. <sup>2</sup>Australian Research Council Centre of Excellence for Coral Reef Studies, James Cook University, Townsville, Queensland 4811, Australia. <sup>3</sup>CRIOBE, USR 3278 CNRS-EPHE-UPVD, Labex 'Corail', University of Perpignan, Perpignan 66860, France. <sup>4</sup>Department of Biological Sciences and Tropical Marine Science Institute, National University of Singapore, Singapore 117543, Singapore. <sup>5</sup>Department of Ecology & Evolutionary Biology, Yale University, 21 Sachem St, New Haven, Connecticut 06511 USA. <sup>6</sup>Département de biologie, chimie et géographie, Université du Québec à Rimouski, 300 Allée des Ursulines, Rimouski, Canada G5L 3A1. <sup>7</sup>Laboratoire d'Écologie Alpine (LECA), Univ. Grenoble Alpes, Grenoble F-38000, France. <sup>8</sup>Laboratoire d'Écologie Alpine (LECA), CNRS, Grenoble F-38000, France. Correspondence and requests for materials should be addressed to D.M. (email: david.mouillot@univ-montp2.fr).

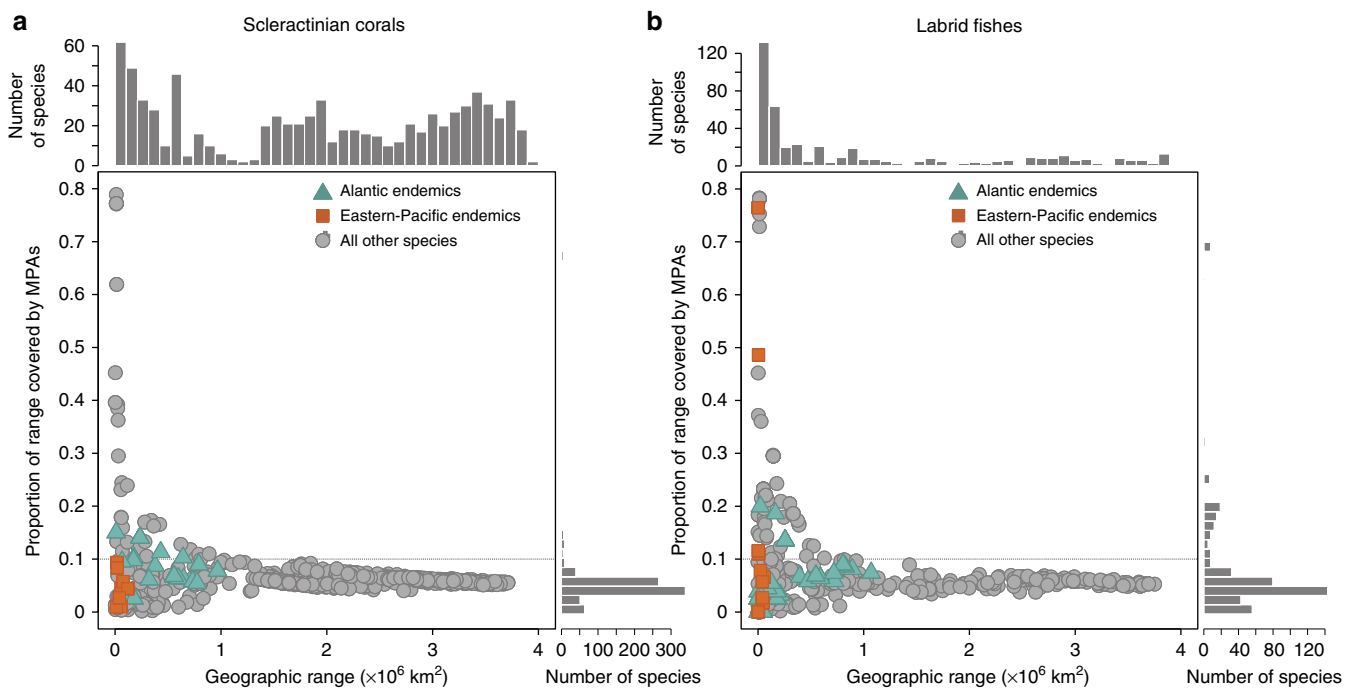
Human activities are altering ecosystems worldwide, changing their biodiversity and composition, and imperilling their capacity to deliver ecosystem services<sup>1</sup>. In this context, protected areas are indisputably the flagship tool for protecting both ecosystems and biodiversity by limiting direct human impacts<sup>2</sup>. Conservation strategies have traditionally focused on vulnerable components of taxonomic diversity such as endemic, rare or threatened species<sup>3,4</sup>. However, phylogenetic diversity, represented by the Tree of Life, is becoming an increasingly important component of conservation science<sup>5,6</sup> since it represents the breadth of evolutionary history<sup>7</sup> and supports biodiversity benefits and uses, often unanticipated, for future generations<sup>8,9</sup>. Phylogenetically related species tend to have similar functional traits, environmental niches and ecological interactions<sup>10,11</sup>, although numerous counter examples exist<sup>12,13</sup>. Therefore, species that are more phylogenetically distinct may have greater functional complementarity. In turn, species assemblages that are more phylogenetically diverse may promote greater biomass production within<sup>14</sup> and across<sup>15</sup> trophic levels even though a universal relationship between phylogenetic diversity and ecosystem functioning remains questionable<sup>9,16</sup>. Yet, few studies have quantitatively assessed the extent to which protected areas encompass phylogenetic diversity<sup>17,18</sup> and none have focused on marine taxa at a global scale.

Here, we tackle this critical issue for the iconic but threatened coral reefs of the world that support one of the largest concentrations of biodiversity, around 830,000 multi-cellular species<sup>19</sup>, and provide vital ecosystem services to half a billion people including food security<sup>20</sup>, financial incomes<sup>21</sup> and protection against natural hazards<sup>22</sup>. There is overwhelming evidence that human activities, particularly fishing pressure and pollution, affect coral reef ecosystem state<sup>23</sup>, functioning<sup>24</sup> and resilience<sup>25</sup>. Thus, to counteract human impacts and

maintain the integrity of coral reefs, thousands of marine-protected areas (MPAs) have been created worldwide<sup>26</sup>. However, the spatial design of the global MPA system is largely contingent on local socioeconomic conditions and history rather than regional or global considerations<sup>27,28</sup>. Furthermore, given the limited resources dedicated to conservation efforts<sup>29</sup> and the need to maintain coastal fisheries for people's livelihoods<sup>21,30</sup>, MPAs cannot be extended to all coral reefs. Guiding future conservation strategies thus remains a key challenge, particularly at a global scale where deficits of protection must be identified and addressed to achieve effective protection of evolutionary history on coral reefs. Here we assessed the extent to which the global system of MPAs represents individual species and phylogenetic diversity for two major components of coral reef ecosystems, shallow-water corals in the order Scleractinia (805 species) and fishes in the family Labridae (452 species). These groups contribute to the high biodiversity of tropical seas<sup>31</sup> and help maintaining productive and resilient reefs<sup>32,33</sup>. We show that the current global MPA system, covering 5.9% of the world's coral reef area, does not meet the minimum conservation targets considered necessary to adequately secure the branches of the Tree of Life for corals or fishes, particularly the longest branches that represent the greatest amount of evolutionary history.

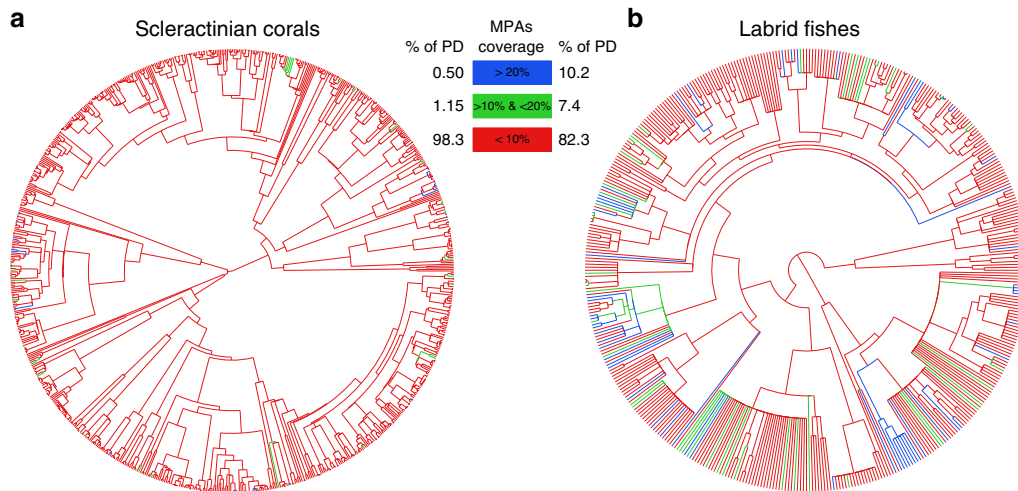
## Results and Discussion

**Lag behind minimum conservation targets.** Using global distribution maps of each scleractinian coral and labrid fish species (Methods), we reveal that only 5.7% of coral species and 21.7% of fish species meet a minimum protection target of 10% potential coverage of their geographic range by the global system of MPAs (Fig. 1). Regionally, the situation is even more contrasted. For example, coral species that occur exclusively in the Tropical Eastern Pacific all fall below the critical 10% coverage



**Figure 1 | Relationship between the total geographic range of species and the proportion of that range covered by the global system of MPAs.**

(a) Scleractinian coral species and (b) fish species of the family Labridae. Histograms on top and to the right represent the distributions of total ranges and proportion of protection among species respectively. Coloured squares and triangles represent endemic species, that is, only present in one of the two biogeographic realms: Atlantic and Eastern Pacific, respectively. Dotted lines represent the 10% threshold corresponding to the minimum representation target for sustaining species persistence.



**Figure 2 | Percentages of geographic ranges covered by the global system of MPAs for species and internal branches across the Tree of Life.**

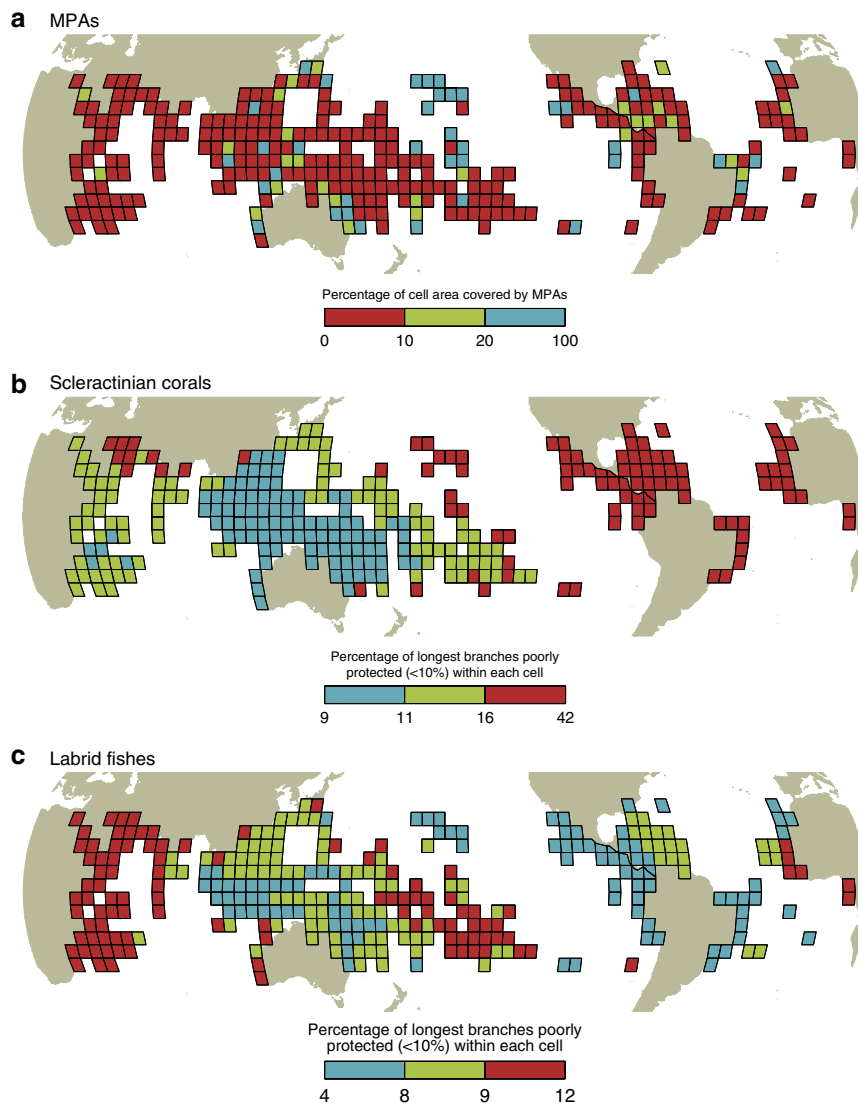
(a) Scleractinian coral species and (b) fish species of the family Labridae. Species or branches in red do not meet the minimum 10% representation threshold, that is, <10% of their geographic range is covered by MPAs, while green and blue colours indicate 10–20% and more than 20% coverage respectively. The corresponding percentage of total phylogenetic diversity (PD) is indicated for each coverage category.

threshold. Similarly, all coral and fish species found only in the Atlantic have <20% coverage (Fig. 1). This 10% threshold has been specifically advocated for wide-ranging species (>250,000 km<sup>2</sup>) and is regarded as a conservative target of coverage by protected areas for sustaining species persistence<sup>3,34</sup>. This conservative cut-off takes into account commission errors, that is, the potential absence of a given species from protected areas that lie within its geographic distribution due to chance or unsuitable habitats<sup>34</sup>.

By applying the same reasoning to the internal branches of the phylogenetic trees (Methods), we show that only 1.7% ( $\pm 0.2$  s.d.) of the Tree of Life of corals and 17.6% ( $\pm 0.6$  s.d.) of fishes attain the minimum 10% coverage (Fig. 2). Thus 7,160 Myr of the evolutionary history of corals and 3,586 Myr of fishes are inadequately represented by the global MPA system, far more than for many other threatened taxonomic groups<sup>8</sup>. Globally, the amount of evolutionary history potentially covered by MPAs, that is, the proportion of the geographic range of evolutionary branches overlapping with the global MPA system, is only 6.0% ( $\pm 0.1$  s.d.) and 8.7% ( $\pm 0.2$  s.d.) for corals and fishes, respectively. Coral evolutionary history receives significantly less coverage than expected under a random distribution of species geographic ranges across the Tree of Life ( $P < 0.001$ ,  $n = 999$ , randomization test) while fishes receive significantly more protection than expected by chance ( $P < 0.001$ ,  $n = 999$ , randomization test) (Methods). The greatest amount of evolutionary history is supported by the longest branches on the Tree of Life. In our case, the top 10% longest extant and internal branches, corresponding to >8.68 Myr ( $\pm 0.5$  s.d.) for corals and >10.7 Myr ( $\pm 0.25$  s.d.) for fishes, support a disproportional amount of evolutionary history, with 62% ( $\pm 0.9\%$  s.d.) and 34% ( $\pm 0.5\%$  s.d.) for corals and fishes, respectively. These longest branches are overwhelmingly under-represented within the global MPA system (Fig. 2). Only 1.3% ( $\pm 0.6\%$  s.d.) of the longest branches in corals and 20.2% ( $\pm 2.3\%$  s.d.) in fishes are adequately protected by the minimum threshold of 10% geographic coverage by MPAs. If those poorly protected longest branches support endangered species we may expect large and abrupt changes in ecosystem functioning following extinctions. This situation already exists for the world's primates, where the most endangered species are both evolutionarily and ecologically distinct<sup>35</sup>. In the sea global

extinctions remain scarce, partly due to limited assessment<sup>36</sup>, but the functionally most distinctive fish species on coral reefs tend to be rare either in their geographic extent or their local abundance<sup>37</sup>. We may thus anticipate a disproportional local loss of functional diversity within coral reef communities if the longest evolutionary branches are under threat and inadequately protected<sup>38</sup>. For instance long-branched lineages include relatively specialized forms, such as the large invertivore *Lachnolaimus* and the world's largest excavating parrotfish *Bolbometopon* which are severely overexploited, suggesting that the loss of long branches may result in the loss of unique and functionally important groups<sup>39</sup>.

**Global distribution of protection deficits.** To highlight the critical gaps in protecting the Tree of Life on coral reefs, we mapped the locations where the longest evolutionary branches that receive <10% coverage are concentrated using a regular grid of 5° × 5° cells (Methods). For corals, the longest evolutionary branches with low protection are predominantly in the Atlantic, Eastern Pacific and, to a lesser extent, the North Indian Ocean (Fig. 3b). These deficits of protection are only marginally correlated with the heterogeneous MPA coverage at the global scale ( $r = 0.045$ ,  $n = 304$  5° × 5° grid cells,  $P > 0.05$ , Fig. 3a). Instead, the high proportion of longest branches, and their unique evolutionary history, in the Atlantic and Eastern Pacific primarily drives this pattern<sup>40</sup> (Fig. 4a,b). For fishes, the highest concentrations of poorly protected long branches are located in the Western Indian, Central Pacific and, to a lesser extent, the Eastern Atlantic (Fig. 3c). As in corals, these deficits of protection are not correlated with the heterogeneous distribution of MPA coverage ( $r = 0.025$ ,  $n = 287$  grid cells,  $P > 0.05$ , Fig. 3a). Instead, the pattern is driven by the relatively high proportion of long evolutionary branches of fishes at the periphery of the Indo-Pacific<sup>41</sup> (Fig. 4c,d). The correlation between the proportion of poorly protected longest evolutionary branches for corals and fishes within assemblages is negative ( $r = -0.15$ ;  $n = 287$  grid cells,  $P = 0.30$ ) suggesting that there is a global spatial mismatch, albeit weak, of conservation needs for these two taxa. The Atlantic and Eastern Pacific tend to concentrate many long and poorly protected branches for corals but substantially less for fishes (Fig. 5). This most likely reflects the biogeographic history of the



**Figure 3 | Global distribution of protection deficits to secure the Tree of Life on coral reefs.** Global maps representing, for each cell ( $5^{\circ} \times 5^{\circ}$ ), the percentage of coral reef habitat covered by MPAs (**a**), and the proportion of the longest evolutionary branches (top 10%) that receive less than the critical 10% coverage by the MPA system within coral (**b**) and fish (**c**) local assemblages. Colours correspond to three categories of values based on percentage of coverage for MPAs and on tertiles for corals and fishes.

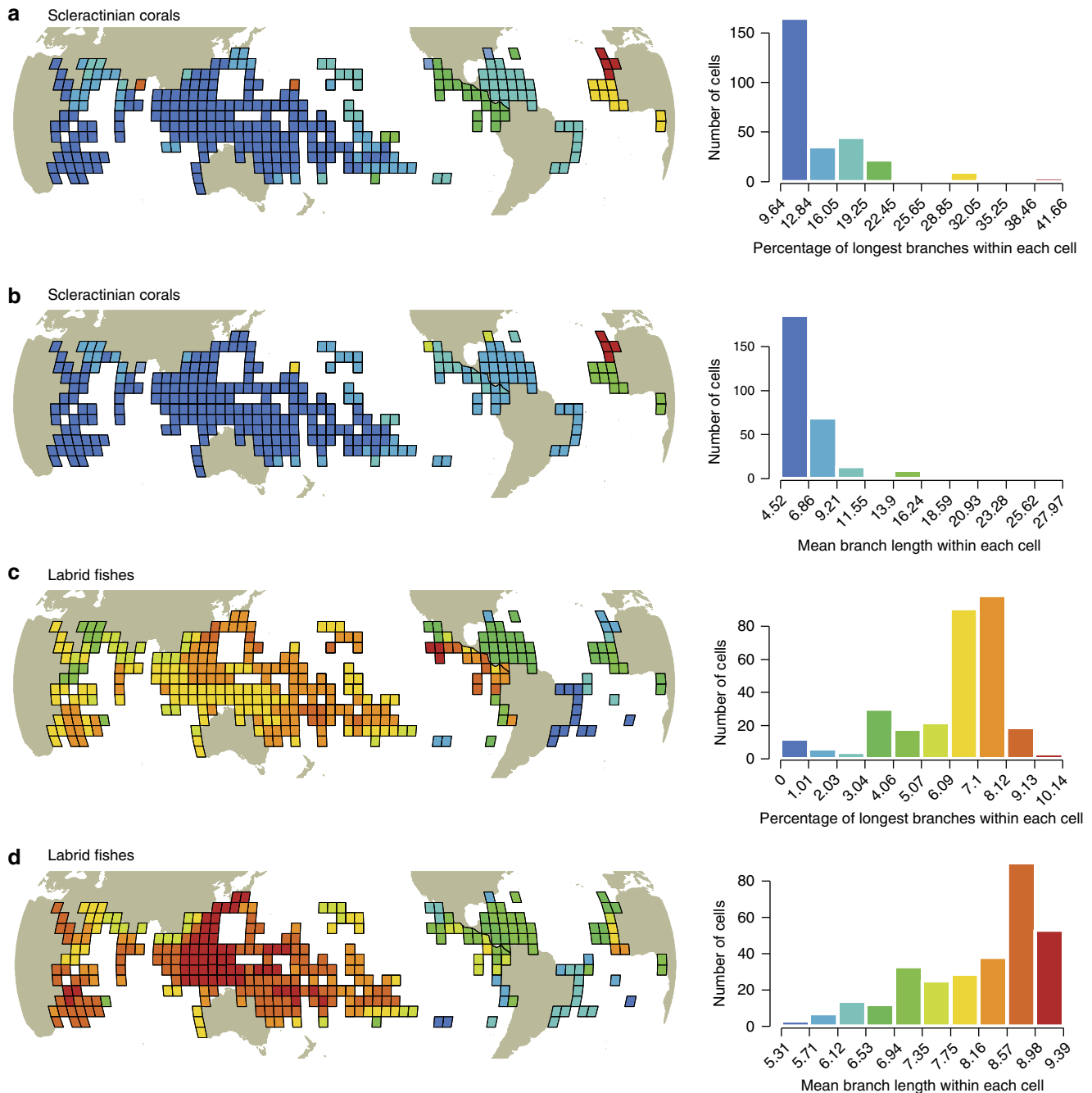
tropical Atlantic which has been characterized by isolation, thus maintaining old coral lineages<sup>40</sup> in contrast to the recent diversification in younger fish lineages<sup>42</sup>, especially along the Brazilian coast where there is extensive evidence of recent colonization<sup>43</sup>. In the Atlantic, therefore, there is a logical priority to emphasize the protection of older coral lineages. For fishes, the Atlantic hosts younger labrid lineages than the Indo-Pacific particularly in the Caribbean following cryptic speciation<sup>42</sup> and in the North Eastern Atlantic with subsequent diversification of Mediterranean lineages following the Messinian Salinity Crisis at 6 Myr (ref. 44). By contrast, the Coral Triangle, at the centre of the Indo-Pacific region, harboured most of the coral reef refugia during the Quaternary glaciations, hence acting as a ‘museum’ for the older labrid lineages<sup>45</sup>.

Globally, the proportion of poorly protected longest branches in corals ranges from 9 to 42% compared with 4 to 12% in fishes (Fig. 3b,c), suggesting that conservation efforts should initially be focused on the Atlantic to better preserve the coral Tree of Life where it is most at risk. West African and, to a lesser extent, South American countries that border each side of the Atlantic, show

the slowest rate of MPA establishment worldwide although positive outliers in environmental governance also occur at both national and local levels<sup>28</sup>. For example, the Dominican Republic has already reached the target of 10% coverage. Similarly an increase in conservation investment has promoted MPA establishment in Eastern Africa<sup>46</sup>. Other countries of Western Africa and Eastern America remain far below the 10% coverage and should be priority areas to better protect the evolutionary history of corals. For fishes, conservation investment are primarily needed in the Western Indian Ocean where poorly protected longest branches are concentrated.

#### Limitations and less conservative protection assessment.

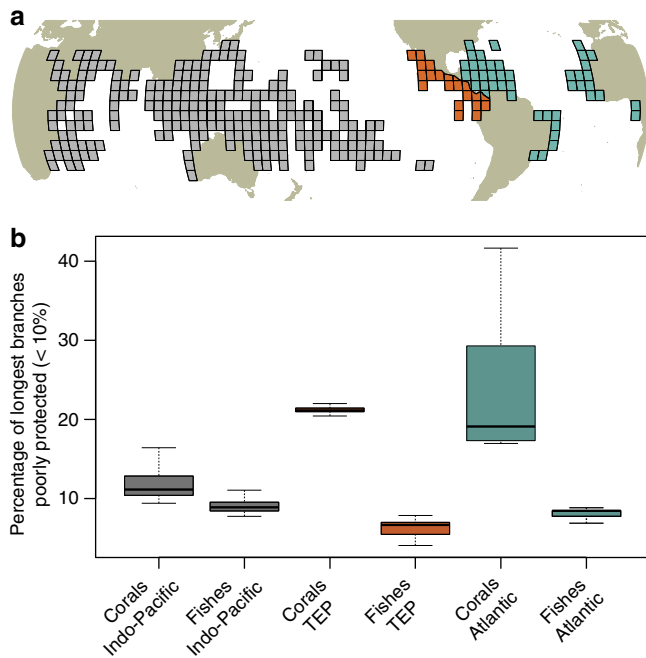
Overall, our results show that the Tree of Life on coral reefs is inadequately represented by the current global MPA system, with most evolutionary branches, particularly the longest ones, receiving <10% protection. Despite the magnitude of this shortfall, our estimates are highly conservative because they are based on the assumption that all MPAs are able to protect every



**Figure 4 | Global distribution of the amount of evolutionary history on coral reefs.** Global maps representing, for each grid cell ( $5^{\circ} \times 5^{\circ}$ ), the percentage of the longest evolutionary branches (top 10%) and the mean evolutionary branch length within coral (**a,b**) and fish (**c,d**) local assemblages, respectively. Colours correspond to classes of the histograms representing the distribution of values across the cells.

coral and fish species that geographically overlaps with them. It thus assumes that coral and fish species are present in all MPAs within their geographic ranges, and that all MPAs are effective in their protection. These assumptions may not be valid. First, we have no proof of individual species presence within MPAs. These commission errors are inevitable given the coarse grain of species geographic distributions and the small size of most MPAs. We therefore assess maximum potential protection while the conservation target of 10% is partly set to compensate for this limitation<sup>34</sup>. Second, although there is overwhelming evidence that MPAs can maintain or increase fish diversity, size and biomass<sup>47,48</sup>, and strong evidence that the presence of intact fish communities can enhance coral persistence

and recovery<sup>49–51</sup>, the extent of these benefits may vary among MPAs. Not all MPAs are able to ensure that fish and coral communities are protected, due to poor compliance and enforcement<sup>52</sup>. Furthermore, MPAs cannot prevent pulses of coral mortality from cyclones or coral bleaching<sup>53</sup>, or from chronic declines in coral recruitment and growth due to degraded water quality<sup>54,55</sup>. MPAs in the Atlantic should better focus on coral lineages while those in the Western Indian Ocean should primarily limit fish overexploitation to protect the amount of evolutionary history on coral reefs. If we exclude MPAs that are not specifically designed to protect species and habitats and have a reduced capacity to protect fish diversity and biomass<sup>48</sup>, that is, if only IUCN categories I to IV are considered (Methods), the



**Figure 5 | Representation in MPAs for branches of the Tree of Life on coral reefs across marine realms.** (a) Global map representing the three marine realms: Indo-Pacific (grey), Tropical Eastern Pacific (orange), and Atlantic (green). (b) Boxplots (median and quartiles) representing the percentage of the longest evolutionary branches (top 10%) that receive less than the critical 10% coverage by the MPA system within coral and fish local assemblages (in  $5^\circ \times 5^\circ$  grid cells) of the three marine realms.

proportion of the Tree of Life attaining the minimum target of 10% coverage by MPAs drops to 0.9% ( $\pm 0.2$  s.d.) and 14.9% ( $\pm 2.0$  s.d.) for corals and fishes, respectively.

## Conclusions

Phylogenetic diversity is one of the key components of biodiversity<sup>5,14</sup>. However, the existing global system of MPAs does not meet the minimum levels considered necessary to adequately protect the Tree of Life for corals or fishes. If MPAs are to protect the Tree of Life, we need to carefully consider their features and future placement. Geographic variation in evolutionary history, and variable susceptibility to human impacts differs among fish and corals. The most notable example is in the Atlantic where there is a predominance of old coral lineages but a larger proportion of younger fish lineages. This mismatch brings to the fore the potential limitations of MPAs, and the differing needs of fishes, corals and other taxa. For corals, many of the major ongoing threats are not mitigated by MPAs. For effective protection we may need to look beyond traditional MPAs and develop new strategies that can encompass the full range of threats to reef biodiversity. A broader approach could include the protection of herbivorous fishes that promote local recovery of corals<sup>50</sup>, management to control terrestrial influences and water quality<sup>56</sup> and effective action to mitigate climate change<sup>57</sup>. For future conservation efforts, we need to adequately secure greater amounts of evolutionary history on coral reefs in the Atlantic, Eastern Pacific and in the Western Indian Ocean.

## Methods

**Data.** We restricted our database to shallow reef habitats (<50 m) showing a minimum monthly sea surface temperature (hereafter SST) of at least  $17^\circ\text{C}$  to define tropical marine waters<sup>58</sup>. We built the geographic distribution of 452 tropical reef fish species from the Family Labridae by compiling 455 references

from 169 locations worldwide<sup>58</sup>. From these distributional data we obtained a range map for each species, defined as the convex polygon shaping the area where each species is present<sup>58</sup>. These were individually checked by expert to avoid the combination of disjointed ranges, for example, anti-tropical species.

We focused on labrid fishes since they (i) represent an exceptionally rich and diverse reef associated family, (ii) live in shallow waters, (iii) benefit from MPAs<sup>59</sup> as a common fisheries target<sup>24</sup> and (iv) have a well resolved phylogeny<sup>41</sup>. To incorporate unsampled taxa, new tips were grafted onto a backbone phylogeny based on other published phylogenies for the group<sup>60,61</sup>, supplemented by species accounts from fish identification guides and FishBase ([www.fishbase.org](http://www.fishbase.org)). Where information allowed, new tips representing unsampled species were added to direct sister species or to the base of the clade representing its genus. The full list of labrid fishes is provided as Supplementary Data 1.

We selected 805 coral species which global range maps were downloaded at <http://www.iucnredlist.org/technical-documents/spatial-data#corals>. We considered only hard corals in shallow habitats. We used the supertree method to reconstruct the phylogeny of the scleractinian clade, comprising a total of 842 reef and 705 non-reef species<sup>40</sup>. The source trees were derived from a molecular phylogeny of 474 species (based on seven mitochondrial DNA markers), 13 morphological trees and 1 taxonomic tree. These were combined via the SuperFine-boosted Matrix Representation with Parsimony<sup>62</sup> and Matrix Representation with Likelihood<sup>63</sup>. The full list of coral species is provided as Supplementary Data 2.

We collected spatial information on MPAs from the WDPA (World Database on Protected Areas) database available at: <http://protectedplanet.net/>. The original database included 9,600 PAs covering a total surface of 17,633,881 km<sup>2</sup>. We eliminated PAs on land, those that did not involve coastal habitat, defined as the portion of sea bottom from 0 to 200 m depth, and MPAs designated to protect species not considered in the present study (for example, birds). The latter were discarded after evaluating the description of the 'Designation' field in the original IUCN-WDPA database. MPAs for which IUCN criteria were either 'not applicable' or 'unknown' (for example, not communicated by the Authority), and are likely to be unreliable, were also removed. The final database included 3,625 MPAs covering a total surface of 942,568 km<sup>2</sup> (IUCN categories I–VI). We also used another restricted data set where we eliminated MPAs that are not specifically designed to protect species or habitats. We retained the 2,224 MPAs belonging to IUCN categories I to IV covering a total surface of 575,806 km<sup>2</sup> with a relatively higher degree of protection.

We then used a  $5^\circ \times 5^\circ$  grid cell corresponding to  $\sim 550 \times 550$  km at the equator to collate the presence of species, the area of tropical reef habitat, and the area of reef habitat protected within MPAs<sup>64</sup>.

**Analyses.** Fossil records show that species extinction risk is primarily determined by geographic range size in the marine realm<sup>65,66</sup> with restricted ranged species being less buffered against demographic variability under changing environments. However, having at least 'one foot' in the MPA system does not ensure persistence<sup>67</sup>. We thus examined the proportion of the geographic range of species overlapping with the global MPA system. This represents a potential overlap since the presence of species within MPAs overlapping with their geographic range was not measured directly. We adopted a threshold of 10% spatial coverage by MPAs corresponding to a minimum (and conservative) target for effective protection<sup>3,34</sup>. This minimum threshold is based on the rationale that some MPAs may be unsuitable for a given species, that protection is not effective in all MPAs and that the coarse grain of species distribution maps may induce commission errors by which species can be absent from protected areas that overlap their geographical ranges<sup>34</sup>.

We applied the same reasoning to the internal branches of phylogenetic trees. The coverage by MPAs of the evolutionary history of a branch is therefore defined as the relative coverage by MPAs of the combined geographic ranges of the species subtending this branch. To evaluate the effectiveness with which MPAs protect the overall Tree of Life we measured the amount of evolutionary history represented by branches that pass the coverage threshold of 10%.

By grafting species we create polytomies on the phylogenetic trees that may bias the results since many species have artificially identical branch lengths. This may ultimately inflate the amount of evolutionary history supported by the tips and the level of phylogenetic conservatism<sup>68</sup>. To limit this bias and estimate the uncertainty of our results linked to the unresolved recent diversification events, polytomies were randomly resolved by a birth–death model<sup>69</sup> using BEAST<sup>70</sup>. Using 100 resolved trees for both corals and fishes, we provided the mean value and s.d. ( $\pm$ ) for each result.

We also tested whether the current global system of MPAs is effective given the topology of the phylogenetic tree and thus the evolutionary constraints that have shaped species geographic ranges across history. To do so we performed a null model analysis where species labels were shuffled across the tips of the two phylogenies. By so doing the null model breaks the relationships between species ranges and their position on the phylogenetic tree while maintaining the amount of species coverage by MPAs. This procedure was applied 999 times for each of the 100 resolved trees to obtain a null frequency distribution for the overall amount of evolutionary history covered by MPAs. From this distribution, we extracted a *P* value for each resolved tree by assessing the positions of the observed in the null frequency distribution. These 100 *P* values were combined using the Fisher's combined probability test to provide a global *P* value quantifying whether the

current global system of MPAs is more or less effective for the observed distribution of species geographic ranges across the phylogenies when compared to a random distribution.

To highlight the critical geographical gaps in protecting the Tree of Life on coral reefs, we mapped, at the grid cell level, the proportion of the longest evolutionary branches that receive <10% coverage. The longest branches are the top 10% for each Tree of Life. We also mapped the proportion of the longest evolutionary branches that are poorly protected, and the mean length of evolutionary history in each grid cell, that is, at the species assemblage level, and in each realm for both corals and fishes.

## References

- Cardinale, B. J. *et al.* Biodiversity loss and its impact on humanity. *Nature* **486**, 59–67 (2012).
- Watson, J. E. M., Dudley, N., Segan, D. B. & Hockings, M. The performance and potential of protected areas. *Nature* **515**, 67–73 (2014).
- Venter, O. *et al.* Targeting global protected area expansion for imperiled biodiversity. *PLoS Biol.* **12**, e1001891 (2014).
- Selig, E. R. *et al.* Global priorities for marine biodiversity conservation. *PLoS ONE* **9**, e82898 (2014).
- Winter, M., Devictor, V. & Schweiger, O. Phylogenetic diversity and nature conservation: where are we? *Trends Ecol. Evol.* **28**, 199–204 (2013).
- Jetz, W. *et al.* Global distribution and conservation of evolutionary distinctness in birds. *Curr. Biol.* **24**, 919–930 (2014).
- Faith, D. P. Conservation evaluation and phylogenetic diversity. *Biol. Conserv.* **61**, 1–10 (1992).
- Veron, S., Davies, T. J., Cadotte, M. W., Clergeau, P. & Pavoine, S. Predicting loss of evolutionary history: where are we? *Biol. Rev. Camb. Philos. Soc.* in press (2015).
- Srivastava, D. S., Cadotte, M. W., MacDonald, A. A. M., Marushia, R. G. & Mirotnich, N. Phylogenetic diversity and the functioning of ecosystems. *Ecol. Lett.* **15**, 637–648 (2012).
- Wiens, J. J. *et al.* Niche conservatism as an emerging principle in ecology and conservation biology. *Ecol. Lett.* **13**, 1310–1324 (2010).
- Gomez, J. M., Verdu, M. & Perfectti, F. Ecological interactions are evolutionarily conserved across the entire tree of life. *Nature* **465**, 918–921 (2010).
- Prinzinger, A. *et al.* Less lineages—more trait variation: phylogenetically clustered plant communities are functionally more diverse. *Ecol. Lett.* **11**, 809–819 (2008).
- Kelly, S., Grenyer, R. & Scotland, R. W. Phylogenetic trees do not reliably predict feature diversity. *Diversity Distrib.* **20**, 600–612 (2014).
- Cadotte, M. W. Experimental evidence that evolutionarily diverse assemblages result in higher productivity. *Proc. Natl. Acad. Sci. USA* **110**, 8996–9000 (2013).
- Thompson, P. L., Davies, T. J. & Gonzalez, A. Ecosystem functions across trophic levels are linked to functional and phylogenetic diversity. *PLoS ONE* **10**, e0117595 (2015).
- Venail, P. *et al.* Species richness, but not phylogenetic diversity, influences community biomass production and temporal stability in a re-examination of 16 grassland biodiversity studies. *Funct. Ecol.* **29**, 615–626 (2015).
- Thuiller, W. *et al.* Conserving the functional and phylogenetic trees of life of European tetrapods. *Philos. Trans. R. Soc. B Biol. Sci.* **370**, 20140005 (2015).
- Guilhaumon, F. *et al.* Representing taxonomic, phylogenetic and functional diversity: new challenges for Mediterranean marine-protected areas. *Diversity Distrib.* **21**, 175–187 (2015).
- Fisher, R. *et al.* Species richness on coral reefs and the pursuit of convergent global estimates. *Curr. Biol.* **25**, 500–505 (2015).
- Hughes, S. *et al.* A framework to assess national level vulnerability from the perspective of food security: the case of coral reef fisheries. *Environ. Sci. Policy* **23**, 95–108 (2012).
- Teh, L. S. L., Teh, L. C. L. & Sumaila, U. R. A global estimate of the number of coral reef fishers. *PLoS ONE* **8**, e65397 (2013).
- Ferrario, F. *et al.* The effectiveness of coral reefs for coastal hazard risk reduction and adaptation. *Nat. Commun.* **5**, 3794 (2014).
- McClanahan, T. R. *et al.* Critical thresholds and tangible targets for ecosystem-based management of coral reef fisheries. *Proc. Natl. Acad. Sci. USA* **108**, 17230–17233 (2011).
- Bellwood, D. R., Hoey, A. S. & Hughes, T. P. Human activity selectively impacts the ecosystem roles of parrotfishes on coral reefs. *Proc. R. Soc. B Biol. Sci.* **279**, 1621–1629 (2012).
- Hughes, T. P., Graham, N. A. J., Jackson, J. B. C., Mumby, P. J. & Steneck, R. S. Rising to the challenge of sustaining coral reef resilience. *Trends Ecol. Evol.* **25**, 633–642 (2010).
- Mora, C. *et al.* Coral reefs and the global network of marine protected areas. *Science* **312**, 1750–1751 (2006).
- Marinesque, S., Kaplan, D. M. & Rodwell, L. D. Global implementation of marine protected areas: is the developing world being left behind? *Mar. Policy* **36**, 727–737 (2012).
- Fox, H. E. *et al.* Explaining global patterns and trends in marine protected area (MPA) development. *Mar. Policy* **36**, 1131–1138 (2012).
- Joppa, L. N. & Pfaff, A. Global protected area impacts. *Proc. R. Soc. B Biol. Sci.* **278**, 1633–1638 (2011).
- Cinner, J. Coral reef livelihoods. *Curr. Opin. Environ. Sustain.* **7**, 65–71 (2014).
- Tittensor, D. P. *et al.* Global patterns and predictors of marine biodiversity across taxa. *Nature* **466**, 1098–U1107 (2010).
- Rogers, A., Blanchard, J. L. & Mumby, P. J. Vulnerability of coral reef fisheries to a loss of structural complexity. *Curr. Biol.* **24**, 1000–1005 (2014).
- Bellwood, D. R., Hughes, T. P., Folke, C. & Nystrom, M. Confronting the coral reef crisis. *Nature* **429**, 827–833 (2004).
- Rodrigues, A. S. L. *et al.* Global gap analysis: Priority regions for expanding the global protected-area network. *Bioscience* **54**, 1092–1100 (2004).
- Redding, D. W., DeWolff, C. V. & Mooers, A. O. Evolutionary distinctiveness, threat status, and ecological oddity in primates. *Conserv. Biol.* **24**, 1052–1058 (2010).
- Webb, T. J. & Mindel, B. L. Global patterns of extinction risk in marine and non-marine systems. *Curr. Biol.* **25**, 506–511 (2015).
- Mouillot, D. *et al.* Rare species support vulnerable functions in high-diversity ecosystems. *PLoS Biol.* **11**, e1001569 (2013).
- Mora, C. *et al.* Global human footprint on the linkage between biodiversity and ecosystem functioning in reef fishes. *PLoS Biol.* **9**, e1000606 (2011).
- D'Agata, S. *et al.* Human-mediated loss of phylogenetic and functional diversity in coral reef fishes. *Curr. Biol.* **24**, 555–560 (2014).
- Huang, D. W. & Roy, K. The future of evolutionary diversity in reef corals. *Philos. Trans. R. Soc. B Biol. Sci.* **370**, 20140010 (2015).
- Cowman, P. F. & Bellwood, D. R. Coral reefs as drivers of cladogenesis: expanding coral reefs, cryptic extinction events, and the development of biodiversity hotspots. *J. Evol. Biol.* **24**, 2543–2562 (2011).
- Floeter, S. R. *et al.* Atlantic reef fish biogeography and evolution. *J. Biogeogr.* **35**, 22–47 (2008).
- Rocha, L. A. Patterns of distribution and processes of speciation in Brazilian reef fishes. *J. Biogeogr.* **30**, 1161–1171 (2003).
- Meynard, C. N., Mouillot, D., Mouquet, N. & Douzery, E. J. P. A phylogenetic perspective on the evolution of mediterranean teleost fishes. *PLoS ONE* **7**, e36443 (2012).
- Pellissier, L. *et al.* Quaternary coral reef refugia preserved fish diversity. *Science* **344**, 1016–1019 (2014).
- Wells, S., Burgess, N. & Ngusuru, A. Towards the 2012 marine protected area targets in Eastern Africa. *Ocean Coast. Manage.* **50**, 67–83 (2007).
- Lester, S. E. *et al.* Biological effects within no-take marine reserves: a global synthesis. *Mar. Ecol. Prog. Ser.* **384**, 33–46 (2009).
- Edgar, G. J. *et al.* Global conservation outcomes depend on marine protected areas with five key features. *Nature* **506**, 216–220 (2014).
- Mumby, P. J. *et al.* Fishing, trophic cascades, and the process of grazing on coral reefs. *Science* **311**, 98–101 (2006).
- Hughes, T. P. *et al.* Phase shifts, herbivory, and the resilience of coral reefs to climate change. *Curr. Biol.* **17**, 360–365 (2007).
- Stockwell, B., Jadloc, C. R. L., Abesamis, R. A., Alcalá, A. C. & Russ, G. R. Trophic and benthic responses to no-take marine reserve protection in the Philippines. *Mar. Ecol. Prog. Ser.* **389**, 1–15 (2009).
- McCook, L. J. *et al.* Adaptive management of the Great Barrier Reef: a globally significant demonstration of the benefits of networks of marine reserves. *Proc. Natl. Acad. Sci. U. S. A.* **107**, 18278–18285 (2010).
- Graham, N. A. J., Jennings, S., MacNeil, M. A., Mouillot, D. & Wilson, S. K. Predicting climate-driven regime shifts versus rebound potential in coral reefs. *Nature* **518**, 94–97 (2015).
- Hughes, T. P. *et al.* Shifting base-lines, declining coral cover, and the erosion of reef resilience: comment on Sweatman *et al.* (2011). *Coral Reefs* **30**, 653–660 (2011).
- McClanahan, T. R., Atweberhan, M., Darling, E. S., Graham, N. A. J. & Muthiga, N. A. Biogeography and change among regional coral communities across the western Indian Ocean. *PLoS ONE* **9**, e93385 (2014).
- Weber, M. *et al.* Mechanisms of damage to corals exposed to sedimentation. *Proc. Natl. Acad. Sci. USA* **109**, E1558–E1567 (2012).
- Rogers, A. *et al.* Anticipative management for coral reef ecosystem services in the 21st century. *Glob. Chang. Biol.* **21**, 504–514 (2015).
- Parravicini, V. *et al.* Global patterns and predictors of tropical reef fish species richness. *Ecography* **36**, 1254–1262 (2013).
- McClanahan, T. R. & Arthur, R. The effect of marine reserves and habitat on populations of east African coral reef fishes. *Ecol. Appl.* **11**, 559–569 (2001).
- Choat, J. H., Klanten, O. S., Van Herwerden, L., Robertson, D. R. & Clements, K. D. Patterns and processes in the evolutionary history of parrotfishes (Family Labridae). *Biol. J. Linn. Soc.* **107**, 529–557 (2012).
- Alfaro, M. E., Brock, C. D., Banbury, B. L. & Wainwright, P. C. Does evolutionary innovation in pharyngeal jaws lead to rapid lineage diversification in labrid fishes? *BMC. Evol. Biol.* **9**, 255 (2009).



62. Swenson, M. S., Suri, R., Linder, C. R. & Warnow, T. SuperFine: fast and accurate supertree estimation. *Syst. Biol.* **61**, 214–227 (2012).
63. Nguyen, N., Mirarab, S. & Warnow, T. MRL and SuperFine plus MRL: new supertree methods. *Algorithms Mol. Biol.* **7**, 3 (2012).
64. Parravicini, V. *et al.* Global mismatch between species richness and vulnerability of reef fish assemblages. *Ecol. Lett.* **17**, 1101–1110 (2014).
65. Harnik, P. G., Simpson, C. & Payne, J. L. Long-term differences in extinction risk among the seven forms of rarity. *Proc. R. Soc. B Biol. Sci.* **279**, 4969–4976 (2012).
66. Payne, J. L. & Finnegan, S. The effect of geographic range on extinction risk during background and mass extinction. *Proc. Natl Acad. Sci. USA* **104**, 10506–10511 (2007).
67. Boyd, C. *et al.* Spatial scale and the conservation of threatened species. *Conserv. Lett.* **1**, 37–43 (2008).
68. Davies, T. J., Kraft, N. J. B., Salamin, N. & Wolkovich, E. M. Incompletely resolved phylogenetic trees inflate estimates of phylogenetic conservatism. *Ecology* **93**, 242–247 (2012).
69. Kuhn, T. S., Mooers, A. O. & Thomas, G. H. A simple polytomy resolver for dated phylogenies. *Methods Ecol. Evol.* **2**, 427–436 (2011).
70. Drummond, A. J., Suchard, M. A., Xie, D. & Rambaut, A. Bayesian Phylogenetics with BEAUti and the BEAST 1.7. *Mol. Biol. Evol.* **29**, 1969–1973 (2012).

### Acknowledgements

The FRB CESAB-GASPAR project is thanked for providing fish geographical data. D.H. is supported by NUS Start-up Grant R-154-000-671-133.

### Author contributions

D.M., D.R.B., W.T. and F.G. conceived the project; all authors designed the study; V.P., F.L., D.H., P.F.C., C.A. and F.G. collected the data and performed the analyses; D.R.B., F.L., T.P.H., C.A. and F.G. drew the figures, D.M. and F.G. wrote the first draft and all authors contributed substantially to revisions.

### Additional information

**Supplementary Information** accompanies this paper at <http://www.nature.com/naturecommunications>

**Competing financial interests:** The authors declare no competing financial interests.

**Reprints and permission** information is available online at <http://npg.nature.com/reprintsandpermissions/>

**How to cite this article:** Mouillot, D. *et al.* Global marine protected areas do not secure the evolutionary history of tropical corals and fishes. *Nat. Commun.* **7**:10359 doi: 10.1038/ncomms10359 (2016).



This work is licensed under a Creative Commons Attribution 4.0 International License. The images or other third party material in this article are included in the article's Creative Commons license, unless indicated otherwise in the credit line; if the material is not included under the Creative Commons license, users will need to obtain permission from the license holder to reproduce the material. To view a copy of this license, visit <http://creativecommons.org/licenses/by/4.0/>