



HAL
open science

Multi-species consumer jams and the fall of guarded corals to crown-of-thorns seastar outbreaks

Mohsen Kayal, Jane Ballard, Mehdi Adjeroud

► **To cite this version:**

Mohsen Kayal, Jane Ballard, Mehdi Adjeroud. Multi-species consumer jams and the fall of guarded corals to crown-of-thorns seastar outbreaks. F1000Research, 2017, 6, 10.12688/f1000research.13118.1 . hal-01764149

HAL Id: hal-01764149

<https://univ-perp.hal.science/hal-01764149v1>

Submitted on 11 Apr 2018

HAL is a multi-disciplinary open access archive for the deposit and dissemination of scientific research documents, whether they are published or not. The documents may come from teaching and research institutions in France or abroad, or from public or private research centers.

L'archive ouverte pluridisciplinaire **HAL**, est destinée au dépôt et à la diffusion de documents scientifiques de niveau recherche, publiés ou non, émanant des établissements d'enseignement et de recherche français ou étrangers, des laboratoires publics ou privés.



RESEARCH NOTE

Multi-species consumer jams and the fall of guarded corals to crown-of-thorns seastar outbreaks [version 1; referees: 2 approved]

Mohsen Kayal ^{1,2}, Jane Ballard³, Mehdi Adjeroud⁴

¹UPVD-CNRS, Centre de Formation et de Recherche sur les Environnements Méditerranéens (CEFREM), UMR 5110, Perpignan, 66860, France

²Centre de Recherche sur les Ecosystèmes Marins (CREM), Port-Barcarès, 66420, France

³National Estuarine Research Reserve Association (NERRA), Wells, ME, 04090, USA

⁴Institut de Recherche pour le Développement (IRD), UMR-9220 ENTROPIE, Perpignan, 66860, France

v1 First published: 13 Nov 2017, 6:1991 (doi: [10.12688/f1000research.13118.1](https://doi.org/10.12688/f1000research.13118.1))
 Latest published: 13 Nov 2017, 6:1991 (doi: [10.12688/f1000research.13118.1](https://doi.org/10.12688/f1000research.13118.1))

Abstract

Outbreaks of predatory crown-of-thorns seastars (COTS) can devastate coral reef ecosystems, yet some corals possess mutualistic guardian crabs that defend against COTS attacks. However, guarded corals do not always survive COTS outbreaks, with the ecological mechanisms sealing the fate of these corals during COTS infestations remaining unknown. In August 2008 in Moorea (17.539° S, 149.830° W), French Polynesia, an unusually dense multi-species aggregation of predators was observed feeding upon guarded corals following widespread coral decline due to COTS predation. Concurrent assaults from these amplified, mixed-species predator guilds likely overwhelm mutualistic crab defense, ultimately leading to the fall of guarded corals. Our observations indicate that guarded corals can sustain devastating COTS attacks for an extended duration, but eventually concede to intensifying assaults from diverse predators that aggregate in high numbers as alternative prey decays. The fall of guarded corals is therefore suggested to be ultimately driven by an indirect trophic cascade that leads to amplified attacks from diverse starving predators following prey decline, rather than COTS assaults alone.

Open Peer Review

Referee Status:

	Invited Referees	
	1	2
version 1 published 13 Nov 2017	 report	 report

1 **Peter W. Glynn**, University of Miami, USA

2 **Ciemon Frank Caballes** , James Cook University, Australia

Discuss this article

Comments (0)

Corresponding author: Mohsen Kayal (mohsen.kayal@gmail.com)

Author roles: **Kayal M:** Conceptualization, Investigation, Visualization, Writing – Original Draft Preparation; **Ballard J:** Writing – Original Draft Preparation, Writing – Review & Editing; **Adjeroud M:** Funding Acquisition, Project Administration, Resources, Supervision, Writing – Review & Editing

Competing interests: No competing interests were disclosed.

How to cite this article: Kayal M, Ballard J and Adjeroud M. **Multi-species consumer jams and the fall of guarded corals to crown-of-thorns seastar outbreaks [version 1; referees: 2 approved]** *F1000Research* 2017, 6:1991 (doi: [10.12688/f1000research.13118.1](https://doi.org/10.12688/f1000research.13118.1))

Copyright: © 2017 Kayal M *et al.* This is an open access article distributed under the terms of the [Creative Commons Attribution Licence](https://creativecommons.org/licenses/by/4.0/), which permits unrestricted use, distribution, and reproduction in any medium, provided the original work is properly cited.

Grant information: Mohsen Kayal's Ph.D. studies were supported by grants from Polynésienne des Eaux and Planète Urgence. *The funders had no role in study design, data collection and analysis, decision to publish, or preparation of the manuscript.*

First published: 13 Nov 2017, 6:1991 (doi: [10.12688/f1000research.13118.1](https://doi.org/10.12688/f1000research.13118.1))

Introduction

Identifying ecological processes that drive species trajectories is a prerequisite for ecosystem management. However, community dynamics are sometimes governed by unexpected, indirect interactions and complex emergent properties that can cause runaway responses and abrupt ecological shifts (Silliman *et al.*, 2013; Terborgh & Estes, 2010). Outbreaks of the coral predator crown-of-thorns seastar (COTS) cause widespread coral mortality across the Indo-Pacific Ocean (Pratchett *et al.*, 2014) with often drastic impacts on diverse reef communities (Kayal *et al.*, 2012). However, some coral species possess mutualistic allies that can deter COTS predation. In particular, trapeziid crabs inhabiting large pocilloporids are known for their ability to effectively defend their host corals from COTS assaults (Glynn, 2013; McKeon & Moore, 2014), although guarded pocilloporids do not always survive COTS outbreaks (Leray *et al.*, 2012; see Figure 1). Despite increasing understanding of factors determining coral susceptibility to COTS predation (Glynn, 1976; Kayal *et al.*, 2011; Kayal & Kayal, 2017; Pratchett, 2001; Rouzé *et al.*, 2014), the processes sealing the fate of guarded corals during outbreaks have remained unknown. Here we provide insights into the ecological mechanisms underlying the fall of guarded corals during predatory COTS outbreaks.

Methods

Our observations were performed at the peak of an intense crown-of-thorns seastar (COTS) outbreak that decimated

coral communities around the island of Moorea (17.539° S, 149.830° W), French Polynesia, between 2003 and 2010. General patterns in propagation of COTS swarms around the island, and impacts on corals and other reef communities were described by Kayal *et al.* (2012); Kayal *et al.* (2017). Here, we provide complementary observations that unveil processes leading to the fall of large pocilloporid assemblages that benefit from “anti-COTS” mutualistic defense, the so-called guarded corals. In Moorea, these assemblages are dominated by *Pocilloporida eydouxi*, a species that hosts trapeziid crabs able to deter COTS predation (Leray *et al.*, 2012; McKeon & Moore, 2014; Figure 1). Our observations were performed using SCUBA on the outer reef slope at Tiahura where the COTS outbreaks in Moorea were initiated and had particularly detrimental impacts (Kayal *et al.*, 2012).

Results and discussion

In August 2008 at 12 m depth on Tiahura reef, we observed an unusually dense aggregation of coral-eating butterflyfishes jamming around guarded pocilloporids, the last coral bastions that had yet resisted swarms of the predatory seastar (Figure 2, Supplementary Image 1). Widespread coral decline had previously wiped out much of resident populations of coral-feeding butterflyfishes (Kayal *et al.*, 2012), pushing starving survivors to aggregate around the guarded corals. The aggregation of 9 butterflyfishes within a single square-meter (9 fish.m⁻²), as captured in Figure 2, was particularly surprising, as density of the coral-feeding butterflyfish assemblage on this reef location

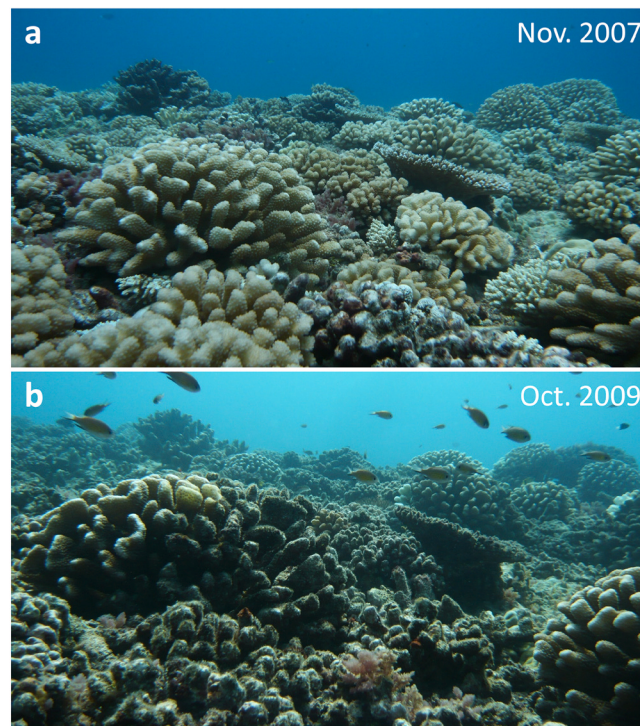


Figure 1. Widespread coral decline and survival of guarded corals that partially or fully resisted seastar predation. Pictures were taken at 6 m depth on Tiahura reef in Moorea, French Polynesia, before (a) and after (b) this location was invaded by crown-of-thorns seastar (COTS) swarms. White feeding scars characteristic of recent COTS predation can be seen on several of the guarded coral colonies (*Pocilloporida eydouxi*) in b.

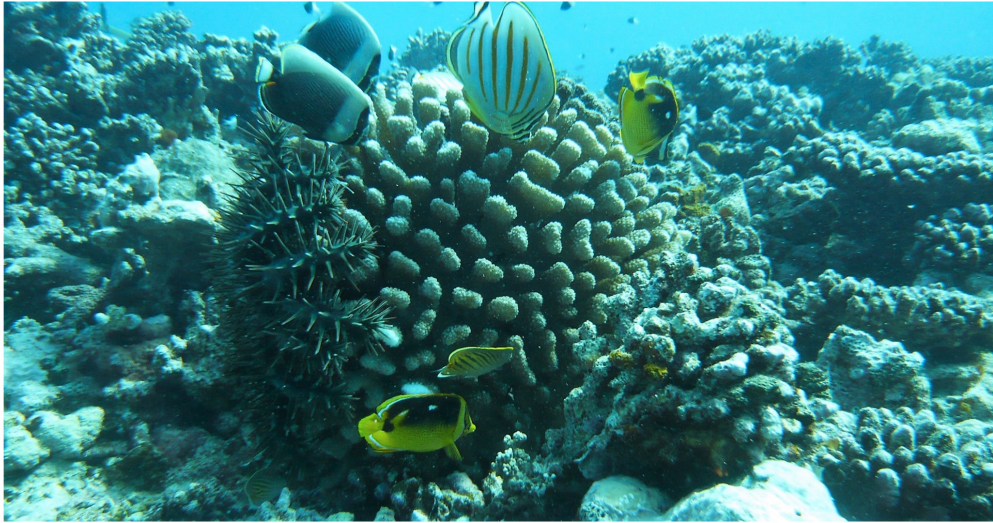


Figure 2. Aggregation of a diversified guild of 10 macro-predators simultaneously feeding upon a guarded coral. This aggregation was observed following widespread coral decline (note the absence of live coral in the background) in August 2008 at 12 m depth on Tiahura reef in Moorea, French Polynesia. The predator guild was composed of a crown-of-thorns seastar (COTS) and nine butterflyfishes from species *Chaetodon ornatissimus*, *C. pelewensis*, *C. quadrimaculatus*, *C. reticulatus*. White feeding scars characteristic of recent COTS predation can be seen on the guarded coral (*Pocillopora eydouxi*).

had dropped to the much lower average value of 4.3 ± 0.9 SE fish.200m⁻² (surveyed in June 2008, equivalent to 0.02 fish.m⁻²). The observed aggregation thus represented a more than 400-times concentration of the predation pressure exerted by the butterflyfishes, and was targeting a guarded pocilloporid that was already under attack by COTS (Figure 2, Supplementary Image 1).

Guarded pocilloporids in Moorea have shown the ability to resist devastating COTS predation for several years (McKeon & Moore, 2014; Figure 1). However, concurrent assaults from such locally amplified, mixed-species predatory guilds likely overwhelm the ability of trapeziid crabs and other exo-symbionts to defend host pocilloporids, ultimately causing the fall of guarded corals. Indeed, coral occupation by mutualist communities is determined by strict rules of territoriality and competition (Glynn, 2013; Leray *et al.*, 2012), which limits the abundance of inhabiting guardians in host colonies, and therefore their ability to sustain predatory assaults. Coral decline has already been identified as an engine of COTS movements and prey selection during

outbreaks (Kayal *et al.*, 2011; Kayal *et al.*, 2012; Silliman *et al.*, 2013). Our observations suggest that further cascading effects include aggregating diverse predators in numbers surpassing mutualistic defenses, eventually leading to the collapse of guarded corals. We therefore advocate the importance of controlling COTS outbreaks at the earliest stages, before trophic cascades could lead to a runaway collapse of coral communities.

Competing interests

No competing interests were disclosed.

Grant information

Mohsen Kayal's Ph.D. studies were supported by grants from Polynésienne des Eaux and Planète Urgence.

The funders had no role in study design, data collection and analysis, decision to publish, or preparation of the manuscript.

Supplementary material

Supplementary Image 1. Additional photographs capturing the predatory guild aggregating around a guarded coral following widespread coral decline. Pictures (a, b) were taken in August 2008 at 12 m depth on Tiahura reef in Moorea, French Polynesia, at the peak of an intense outbreak of the coral-eating crown-of-thorns seastar (COTS). The observed macro-predator aggregation was composed of one COTS and nine individuals from resident butterflyfish species *Chaetodon ornatissimus*, *C. pelewensis*, *C. quadrimaculatus*, *C. reticulatus* (see Figure 2). White feeding scars characteristic of recent COTS predation can be seen on the guarded coral (*Pocillopora eydouxi*).

[Click here to access the data.](#)

References

- Glynn PW: **Some physical and biological determinants of coral community structure in the eastern Pacific.** *Ecol Monogr.* 1976; **46**(4): 431–456.
[PubMed Abstract](#) | [Publisher Full Text](#)
- Glynn PW: **Fine-scale interspecific interactions on coral reefs: functional roles of small and cryptic metazoans.** *Smithson Contrib Mar Sci.* 2013; **39**: 229–248.
[Reference Source](#)
- Kayal M, Bosserelle P, Adjeroud M: **Bias associated with the detectability of the coral-eating pest crown-of-thorns seastar and implications for reef management.** *R Soc Open Sci.* 2017; **4**(8): 170396.
[PubMed Abstract](#) | [Publisher Full Text](#) | [Free Full Text](#)
- Kayal M, Kayal E: **Colonies of the fire coral *Millepora platyphylla* constitute scleractinian survival oases during *Acanthaster* outbreaks in French Polynesia.** *Mar Biodivers.* 2017; **47**(1): 255–258.
[Publisher Full Text](#)
- Kayal M, Lenihan HS, Pau C, *et al.*: **Associational refuges among corals mediate impacts of a crown-of-thorns starfish *Acanthaster planci* outbreak.** *Coral Reefs.* 2011; **30**(3): 827–837.
[Publisher Full Text](#)
- Kayal M, Vercelloni J, Lison de Loma T, *et al.*: **Predator crown-of-thorns starfish (*Acanthaster planci*) outbreak, mass mortality of corals, and cascading effects on reef fish and benthic communities.** *PLoS One.* 2012; **7**(10): e47363.
[PubMed Abstract](#) | [Publisher Full Text](#) | [Free Full Text](#)
- Leray M, Béraud M, Anker A, *et al.*: ***Acanthaster planci* outbreak: decline in coral health, coral size structure modification and consequences for obligate decapod assemblages.** *PLoS One.* 2012; **7**(4): e35456.
[PubMed Abstract](#) | [Publisher Full Text](#) | [Free Full Text](#)
- McKeon CS, Moore JM: **Species and size diversity in protective services offered by coral guard-crabs.** *PeerJ.* 2014; **2**: e574.
[PubMed Abstract](#) | [Publisher Full Text](#) | [Free Full Text](#)
- Pratchett MS: **Influence of coral symbionts on feeding preferences of crown-of-thorns starfish *Acanthaster planci* in the western Pacific.** *Mar Ecol Prog Ser.* 2001; **214**: 111–119.
[Publisher Full Text](#)
- Pratchett MS, Caballes CF, Rivera-Posada JA, *et al.*: **Limits to understanding and managing outbreaks of crown-of thorns starfish (*Acanthaster spp.*).** *Oceanogr Mar Biol Annu Rev.* 2014; **52**: 133–200.
[Reference Source](#)
- Rouzé H, Lecellier G, Mills SC, *et al.*: **Juvenile *Trapezia* spp. crabs can increase juvenile host coral survival by protection from predation.** *Mar Ecol Prog Ser.* 2014; **515**: 151–159.
[Publisher Full Text](#)
- Silliman BR, McCoy MW, Angelini C, *et al.*: **Consumer fronts, global change, and runaway collapse in ecosystems.** *Annu Rev Ecol Evol Syst.* 2013; **44**: 503–538.
[Publisher Full Text](#)
- Terborgh J, Estes JA: **Trophic cascades: predators, prey, and the changing dynamics of nature.** Island Press, Washington DC. 2010.
[Reference Source](#)

Open Peer Review

Current Referee Status:  

Version 1

Referee Report 07 February 2018

doi:10.5256/f1000research.14230.r30512



Ciemon Frank Caballes 

ARC Centre of Excellence for Coral Reef Studies, James Cook University, Townsville, Qld, Australia

This is an interesting observation of a relatively high concentration of a multi-species predator guild on corals that were initially spared from crown-of-thorns seastar (COTS) predation. The ultimate demise of "guarded" Pocilloporids may have been due to a high density of starving COTS (at the peak of an outbreak) feeding on whatever coral was left and overwhelming mutualistic crabs in the process. The overall impact of the butterflyfish, in terms of coral mortality, was most likely lower compared to COTS.

It is unclear whether this was a widespread occurrence or a one-time observation. A brief description of the feeding behaviour of COTS and butterflyfishes (relative contribution to coral mortality), as well as the defensive behaviour of Trapeziid crabs will be useful.

METHODS: Change *Pocilloporida eydouxii* to *Pocillopora eydouxii*.

SUPPLEMENTARY IMAGE 1: Feeding scars are not clear in the pictures.

Is the work clearly and accurately presented and does it cite the current literature?

Yes

Is the study design appropriate and is the work technically sound?

Yes

Are sufficient details of methods and analysis provided to allow replication by others?

Partly

If applicable, is the statistical analysis and its interpretation appropriate?

Not applicable

Are all the source data underlying the results available to ensure full reproducibility?

Yes

Are the conclusions drawn adequately supported by the results?

Yes

Competing Interests: No competing interests were disclosed.

I have read this submission. I believe that I have an appropriate level of expertise to confirm that it is of an acceptable scientific standard.

Referee Report 12 December 2017

doi:[10.5256/f1000research.14230.r27894](https://doi.org/10.5256/f1000research.14230.r27894)



Peter W. Glynn

Rosenstiel School of Marine and Atmospheric Science, Department of Marine Biology and Ecology, University of Miami, Miami, FL, USA

The alpheid shrimp guard, *Alpheus lottini*, also should be noted as defending pocilloporid corals from COTS attacks. This shrimp guard occurs world-wide on pocilloporid corals.

It would also be worth noting the defensive behaviour, if any, of the crustacean guards toward the fish corallivores.

'White feeding scars' are referred to in Fig. 1 and Fig. 2 (supplementary image). These are difficult to make out in the photographs. I suggest adding arrows to make these easier to see. Also, it would be useful to know the approximate diameters of the *P. eydouxi* colonies.

Is the work clearly and accurately presented and does it cite the current literature?

Yes

Is the study design appropriate and is the work technically sound?

Yes

Are sufficient details of methods and analysis provided to allow replication by others?

Yes

If applicable, is the statistical analysis and its interpretation appropriate?

No

Are all the source data underlying the results available to ensure full reproducibility?

Yes

Are the conclusions drawn adequately supported by the results?

Yes

Competing Interests: No competing interests were disclosed.

Referee Expertise: Reef coral biology and ecology.

I have read this submission. I believe that I have an appropriate level of expertise to confirm that it is of an acceptable scientific standard.

The benefits of publishing with F1000Research:

- Your article is published within days, with no editorial bias
- You can publish traditional articles, null/negative results, case reports, data notes and more
- The peer review process is transparent and collaborative
- Your article is indexed in PubMed after passing peer review
- Dedicated customer support at every stage

For pre-submission enquiries, contact research@f1000.com

F1000Research