



HAL
open science

Spectral analysis of turbulence in anisothermal channel flows

Frederic Aulery, Dorian Dupuy, Adrien Toutant, Françoise Bataille, Ye Zhou

► **To cite this version:**

Frederic Aulery, Dorian Dupuy, Adrien Toutant, Françoise Bataille, Ye Zhou. Spectral analysis of turbulence in anisothermal channel flows. *Computers and Fluids*, 2017, 151, pp.115 - 131. 10.1016/j.compfluid.2016.06.011 . hal-01906284

HAL Id: hal-01906284

<https://univ-perp.hal.science/hal-01906284>

Submitted on 26 Oct 2018

HAL is a multi-disciplinary open access archive for the deposit and dissemination of scientific research documents, whether they are published or not. The documents may come from teaching and research institutions in France or abroad, or from public or private research centers.

L'archive ouverte pluridisciplinaire **HAL**, est destinée au dépôt et à la diffusion de documents scientifiques de niveau recherche, publiés ou non, émanant des établissements d'enseignement et de recherche français ou étrangers, des laboratoires publics ou privés.

Spectral analysis of turbulence in anisothermal channel flows

Frederic Aulery^{a,b,*}, Dorian Dupuy^a, Adrien Toutant^a, Françoise Bataille^a, Ye Zhou^c

^a*PROMES CNRS, Université de Perpignan Via Domitia, Rambla de la thermodynamique, Tecnosud, 66100 Perpignan, France*

^b*Univ. Orléans, INSA-CVL, PRISME, EA 4229, F45072, Orléans, France*

^c*Lawrence Livermore National Laboratory, Livermore 94550, USA*

Abstract

In very anisothermal turbulent flows, the temperature gradient and turbulence are strongly coupled. The impact of the temperature gradient on turbulent kinetic energy (TKE) balance terms is of particular importance. It is investigated using direct numerical simulations and large eddy simulations of a fully developed anisothermal channel flow. A low Mach flow at two turbulent Reynolds number (180 and 395) is considered. The temperatures of the two channel walls are 293 K and 586 K. Comparison with isothermal channel flows are carried out. The turbulent kinetic energy spectral evolution equation is established and is decomposed into the three distinctive mechanisms: production, nonlinear transfer and viscous effects. The decomposition isolates the terms that vanish in the isothermal case, namely purely anisothermal effects. The behavior of each term is first discussed in the isothermal case. The alteration of the TKE balance terms with the temperature gradient is then analysed relatively to the Reynolds number variation. The thermal gradient effect is characterized by the combined effect of local Reynolds number variation and the complex interaction between temperature and turbulence. The purely anisothermal contribution moves the energy from the hot side to the cold side and accounts for near 10% of the total process.

*Corresponding author : frederic.aulery@gmail.com

Keywords: Turbulence, Temperature, Numerical simulations, Spectral analysis, Low Mach number flows

1. Introduction

Flows under strong temperature gradient are prevalent in many industrial processes. In particular, the conception of a high temperature solar receiver for concentrated solar power plants requires a better understanding of the physical effects of the temperature gradient on the turbulence [1]. These flows are characterized by a strong coupling between the energy equation and the momentum equation. Besides, high variations of the fluid properties associated with the temperature gradient are observed. As a result, these flows deviate from the behavior of incompressible flows [2]. An improved understanding of the energy transfers occurring in these flows would provide valuable information to explain how the temperature gradient modify the flow. This would also benefit the development of turbulence models taking into account the specificities of these flows. Hence, we need reliable knowledge of the turbulent kinetic energy budget, that is of the mechanisms which governs the energy distribution: production, nonlinear transfer and viscous effects. The analysis of the aforementioned terms of the dynamic equation for the energy transfer process can be performed on the physical space or extended to the spectral space. The latter approach has been adopted in this study.

The analysis of turbulent kinetic energy assumes the decomposition of total kinetic energy, fundamental property of the flow, into two contributions: the mean kinetic energy, associated with the mean motion and the turbulent kinetic energy, associated with the turbulent motion. In the isothermal case, such decomposition of the total kinetic energy through Reynolds averaging is straightforward and brings no ambiguity about the physical interpretation of the terms [3]. Using this decomposition, the energy cascade process has been studied extensively for incompressible isothermal flows. The first studies on the subject were focused on homogeneous isotropic turbulence. For instance, Kol-

mogorov’s hypothesis on the locality of the energy transfer [4] and interacting scales [5, 6] have been validated by numerical simulations. Extension to the
30 isothermal channel flows has been pursued by Domaradzki *et al.* [7], Marati *et al.* [8], Bolotnov *et al.* [9], and Cimarelli *et al.* [10, 11].

In the anisothermal case, the decomposition of total kinetic energy into mean and turbulent kinetic energy is a complex problem. The decomposition is not unique due to the variable density. This leads to several different definitions
35 of turbulent kinetic energy. The most common decomposition uses density-weighted averaging, also called Favre averaging [12], to group total kinetic energy into two terms (see e.g. [13, 14]). This method has also been referred by Chassaing *et al.* as binary regrouping [3]. This is opposed to the ternary regrouping proposed by Chassaing [15]. Another methodology uses a variable
40 change based on density square root weighted velocity. This variable change has been used by various authors in spatial and spectral space [16, 17, 18, 19, 20]. Regardless of the decomposition used, the spectral behaviour of anisothermal flow has so far received little attention from the litterature, though some interesting behaviours have been shown. For instance, the well-known Kolmogorov
45 5/3 scaling law [21] falls short because of the strong dilatational effects of the temperature gradient [22]. The temperature gradient can in these flows be considered as a strong external agency that modifies the turbulence properties. This is analogous to flows subjected to strong magnetic field, rotation, or stratification [23, 24, 25]. Aulery *et al.* [16] have performed an analysis of the energy
50 transfer processes with respect to the effect of the temperature gradient. This is to the best knowledge of the authors the only spectral study of the turbulent kinetic energy balance terms in this setting. However, the scope of the study is limited to a single Reynolds number.

We aim to enrich this study with further analysis of the influence of the
55 turbulent Reynolds number on the role of the temperature gradient. Following Aulery *et al.* [16], turbulent kinetic energy spectral evolution equation is written using density square root weighted velocity. Our approach is based on the evaluation from numerical simulations of the terms of the dynamic equation

for the energy transfer process in the case of a fully developed anisothermal
60 channel flow. This geometry is one of the simpler that involves turbulence and
high temperature gradient. Furthermore, the two homogeneous directions make
the study of the energy transfer process easier. Direct numerical simulation
and large eddy simulation are carried out to provide the data for this study.
Knowledge of the instantaneous three-dimensional velocity flows is required to
65 compute the various source terms of the energy transfer process, an information
difficult to obtain using experimental investigations, limited by the measure-
ment techniques, or closure theories, so far restricted to homogeneous isotropic
turbulence.

The spectral equation for the turbulent kinetic energy and the decomposition
70 used can be found in section 2. The detailed channel flow configuration is
described in section 3 as well as the numerical method used and its validation in
the isothermal case. Further details about the implementation of the turbulent
kinetic energy evolution terms are also provided. Results are discussed in section
4 for the isothermal case and in section 5 for the anisothermal case.

75 2. Momentum and spectral transport equations

2.1. Basic equations for direct numerical simulations

In this study, a low Mach number approximation is considered. This ap-
proach is relevant when acoustics effects are negligible, an hypothesis valid for
low Mach number ($Ma < 0.3$). Following Paolucci [26], the method used relies
80 on an asymptotic development of the variables of the Naviers-Stokes equations
as a power series of the Mach number. Removing all but the smaller order
terms leads to a new set of equations, free of acoustics constraints and Courant-
Friedrichs-Lewy condition [27]. The development also splits the pressure in two
different terms:

- 85 • The thermodynamical pressure P_0 appears in the energy conservation
equation and the equation of state. It is constant in space and repre-
sents the mean pressure in the domain.

- The mechanical pressure P appears in the momentum conservation equation and represents the pressure associated with momentum variations. It can vary spatially.

The gas considered is air; The effect of gravity is neglected and an ideal gas is considered.

These assumptions result in the following set of equations:

Mass equation:

$$\frac{\partial \rho}{\partial t} + \frac{\partial (\rho U_j)}{\partial x_j} = 0 \quad (1a)$$

Momentum equation:

$$\frac{\partial \rho U_i}{\partial t} + \frac{\partial \rho U_j U_i}{\partial x_j} = -\frac{\partial P}{\partial x_i} + \frac{\partial}{\partial x_j} \left[\mu \left(\frac{\partial U_i}{\partial x_j} + \frac{\partial U_j}{\partial x_i} \right) \right] - \frac{2}{3} \frac{\partial}{\partial x_j} \left(\mu \frac{\partial U_j}{\partial x_j} \right) \quad (1b)$$

Energy equation:

$$\rho C_p \left(\frac{\partial T}{\partial t} + U_j \frac{\partial T}{\partial x_j} \right) = \frac{\partial P_0}{\partial t} + \frac{\partial}{\partial x_j} \left(\lambda \frac{\partial T}{\partial x_j} \right) \quad (1c)$$

Ideal gas law:

$$P_0 = \rho r T \quad (1d)$$

Thermodynamic pressure homogeneity:

$$\frac{\partial P_0}{\partial x} = \frac{\partial P_0}{\partial y} = \frac{\partial P_0}{\partial z} = 0 \quad (1e)$$

In this set of equations, ρ is the density, T the temperature, μ the dynamic viscosity, λ the thermal conductivity, C_p the heat capacity at constant pressure, r the ideal gas specific constant, t the time, P the mechanical pressure, P_0 the thermodynamic pressure, U_i the i -th component of velocity and x_i the Cartesian coordinate in i -direction. Einstein summation convention is used. The temporal evolution of the thermodynamical pressure P_0 is computed from the integration of equation (1c) using the ideal gas law (1d) and the fact that the thermodynamical pressure P_0 is constant in space (1e).

2.2. Equations and models for large-eddy simulations

In this study, direct numerical simulations (DNS) and large eddy simulations (LES) are performed. In the case of LES, the subgrid terms related to the

convective terms of equations (1b) and (1c) are modeled. The non-linear terms occurring in the viscous terms and in the conductive heat fluxes terms are neglected. Let us denote $(\bar{\cdot})$ the spatial filtering operator and $(\widetilde{\cdot})$ the Favre filtering operator defined for an arbitrary quantity ϕ as [28]:

$$\widetilde{\phi} = \frac{\overline{\rho\phi}}{\bar{\rho}} \quad (2)$$

The filtered low Mach number set of equations used with regard to LES is:

$$\frac{\partial \bar{\rho}}{\partial t} + \frac{\partial \bar{\rho} \widetilde{U}_j}{\partial x_j} = 0 \quad (3a)$$

$$\frac{\partial \bar{\rho} \widetilde{U}_i}{\partial t} + \frac{\partial \bar{\rho} \widetilde{U}_j \widetilde{U}_i}{\partial x_j} = -\frac{\partial \bar{P}}{\partial x_i} + \frac{\partial}{\partial x_j} \left[\bar{\mu} \left(\frac{\partial \widetilde{U}_i}{\partial x_j} + \frac{\partial \widetilde{U}_j}{\partial x_i} \right) \right] - \frac{2}{3} \frac{\partial}{\partial x_i} \left(\bar{\mu} \frac{\partial \widetilde{U}_j}{\partial x_j} \right) - \frac{\partial \bar{\rho} \tau_{ij}}{\partial x_j} \quad (3b)$$

$$C_p \left(\frac{\partial \bar{\rho} \widetilde{T}}{\partial t} + \frac{\partial \bar{\rho} \widetilde{U}_j \widetilde{T}}{\partial x_j} \right) = \frac{\partial \bar{P}_0}{\partial t} + \frac{\partial}{\partial x_j} \left(\bar{\lambda} \frac{\partial \widetilde{T}}{\partial x_j} \right) - \frac{\partial \bar{\rho} C_p \mathfrak{S}_j}{\partial x_j} \quad (3c)$$

$$\bar{P}_0 = r \bar{\rho} \widetilde{T} \quad (3d)$$

$$\frac{\partial \bar{P}_0}{\partial x} = \frac{\partial \bar{P}_0}{\partial y} = \frac{\partial \bar{P}_0}{\partial z} = 0 \quad (3e)$$

with:

$$\tau_{ij} = \widetilde{U}_j \widetilde{U}_i - \widetilde{U}_j \widetilde{U}_i \quad (4a)$$

$$\mathfrak{S}_j = \widetilde{U}_j \widetilde{T} - \widetilde{U}_j \widetilde{T} \quad (4b)$$

The WALE model [29] has been chosen for the modelling of the subgrid scale tensor τ_{ij} . First, the subgrid scale viscosity ν_{sg} is computed using:

$$\nu_{sg} = \left(C_w \widetilde{\Delta} \right)^2 \frac{(s_{ij}^d s_{ij}^d)^{3/2}}{(\widetilde{S}_{ij} \widetilde{S}_{ij})^{5/2} + (s_{ij}^d s_{ij}^d)^{5/4}} \quad (5)$$

with $\tilde{\Delta}$ the subgrid characteristic length scale, C_w a constant, \tilde{S}_{ij} the filtered strain tensor:

$$\tilde{S}_{ij} = \frac{1}{2} \left(\frac{\partial \tilde{U}_i}{\partial x_j} + \frac{\partial \tilde{U}_j}{\partial x_i} \right) \quad (6)$$

and s_{ij}^d the traceless symmetric part of the square of the velocity gradient tensor which can be written as:

$$s_{ij}^d = \tilde{S}_{ik} \tilde{S}_{kj} + \tilde{\Omega}_{ik} \tilde{\Omega}_{kj} - \frac{1}{3} \delta_{ij} \left(\tilde{S}_{mn} \tilde{S}_{mn} - \tilde{\Omega}_{mn} \tilde{\Omega}_{mn} \right) \quad (7)$$

where $\tilde{\Omega}_{ij}$ is the filtered rotation vector:

$$\tilde{\Omega}_{ij} = \frac{1}{2} \left(\frac{\partial \tilde{U}_i}{\partial x_j} - \frac{\partial \tilde{U}_j}{\partial x_i} \right) \quad (8)$$

The deviatoric part τ_{ij}^d of the subgrid scale tensor is then calculated with the following expression:

$$\tau_{ij}^d = \tau_{ij} - \frac{1}{3} \delta_{ij} \tau_{kk} = -2\nu_{sg} \tilde{S}_{ij} \quad (9)$$

The complementary term $\frac{1}{3} \delta_{ij} \tau_{kk}$ is added to the filtered pressure term and requires no modelling.

The subgrid scale heat flux \mathfrak{S}_j is calculated using a subgrid scale diffusivity model [30]:

$$\mathfrak{S}_j = \kappa_{sg} \frac{\partial \tilde{T}}{\partial x_j} \quad (10)$$

with κ_{sg} the subgrid scale diffusivity, linked to the subgrid scale viscosity through

105 the subgrid scale Prandtl number $Pr_{sg} = \frac{\nu_{sg}}{\kappa_{sg}}$.

To compute dynamic viscosity, Sutherland law [31] has been adopted:

$$\mu(T) = \mu_0 \left(\frac{T}{T_0} \right)^{\frac{3}{2}} \frac{T_0 + S}{T + S} \quad (11)$$

with $\mu_0 = 1.716 \cdot 10^{-5}$, $S = 110.4$ and $T_0 = 273.15$. Thermal conductivity is deduced from Prandtl number, assumed constant and equal to 0.7:

$$\lambda(T) = \frac{C_p}{Pr} \mu(T) \quad (12)$$

The heat capacity at constant pressure is $C_p = 1005 \text{ J kg}^{-1} \text{ K}^{-1}$. The ideal gas specific constant is $r = 287 \text{ J kg}^{-1} \text{ K}^{-1}$.

2.3. Turbulent kinetic energy equation

We use a change of variable, introduced by Cook and Zhou [20] and Kida and Orszag [18], suitable for the study of flows with an highly variable density. Firstly, we focus on the left side of the low Mach moment equation (1b):

$$\frac{\partial \rho U_i}{\partial t} + \frac{\partial \rho U_i U_j}{\partial x_j} \quad (13)$$

Introducing the new variables $V_i = \rho^{\frac{1}{2}} U_i$ and $b = \rho^{-\frac{1}{2}}$ into (13), we get:

$$\begin{aligned} \frac{\partial \rho U_i}{\partial t} + \frac{\partial \rho U_i U_j}{\partial x_j} &= \frac{\partial \sqrt{\rho} V_i}{\partial t} + \frac{\partial \sqrt{\rho} V_i U_j}{\partial x_j} \\ &= \sqrt{\rho} \frac{\partial V_i}{\partial t} + \frac{1}{2} b V_i \frac{\partial \rho}{\partial t} + \sqrt{\rho} \frac{\partial V_i U_j}{\partial x_j} + \frac{1}{2} V_i U_j b \frac{\partial \rho}{\partial x_j} \\ &= \sqrt{\rho} \left(\frac{\partial V_i}{\partial t} + \frac{\partial V_i U_j}{\partial x_j} \right) + \frac{1}{2} b V_i \left(\frac{\partial \rho}{\partial t} + U_j \frac{\partial \rho}{\partial x_j} \right) \end{aligned} \quad (14)$$

From the mass equation (1a), we can write:

$$\frac{\partial \rho}{\partial t} + U_j \frac{\partial \rho}{\partial x_j} = -\rho \frac{\partial U_j}{\partial x_j} \quad (15)$$

Now, by substituting (15) into (14):

$$\begin{aligned} \frac{\partial \rho U_i}{\partial t} + \frac{\partial \rho U_i U_j}{\partial x_j} &= \sqrt{\rho} \left(\frac{\partial V_i}{\partial t} + \frac{\partial V_i U_j}{\partial x_j} \right) + \frac{1}{2} b V_i \left(-\rho \frac{\partial U_j}{\partial x_j} \right) \\ &= \frac{1}{b} \left(\frac{\partial V_i}{\partial t} + \frac{\partial V_i U_j}{\partial x_j} - \frac{1}{2} V_i \frac{\partial U_j}{\partial x_j} \right) \end{aligned} \quad (16)$$

Finally, the variable change leads to the following momentum equation:

$$\frac{\partial V_i}{\partial t} + \frac{\partial V_i U_j}{\partial x_j} - \frac{1}{2} V_i \frac{\partial U_j}{\partial x_j} = b \left[-\frac{\partial P}{\partial x_i} + \frac{\partial}{\partial x_j} \left[\mu \left(\frac{\partial U_i}{\partial x_j} + \frac{\partial U_j}{\partial x_i} \right) \right] - \frac{2}{3} \frac{\partial}{\partial x_i} \left(\mu \frac{\partial U_j}{\partial x_j} \right) \right] \quad (17)$$

Following Aulery *et al.* [16], the turbulent kinetic energy evolution can be decomposed into three main mechanisms which are the turbulent production Π defined by equation (19a), the total transfer $\sum_n T_n$ which is the sum of all triadic and pressure terms and finally the viscous part D (19g) that brings together all viscous effects.

$$\frac{\partial E_c(k, y, t)}{\partial t} = \Pi(k, y, t) + \sum_n T_n(k, y, t) + D(k, y, t) \quad (18)$$

110 **A derivation of the spectral turbulent kinetic energy evolution equation is presented in Appendix A.**

2.4. Decomposition of TKE evolution terms

For our study, we choose to decompose transfer mechanisms using a Bolotnov *et al.* [9] based decomposition. The triadic and pressure part are split following the gradient direction. The terms with derivatives in the homogeneous xOz plane ($\frac{\partial}{\partial x}$ and $\frac{\partial}{\partial z}$) are named *in-plane* terms. The terms with derivatives in the wall-normal direction ($\frac{\partial}{\partial y}$) are named *inter-plane* terms. In addition, we take into account the variation of scalar quantities due to temperature that results from the non-free divergence, the mean wall-normal velocity $\langle U_y \rangle$ and density gradient. These terms are null for isothermal incompressible flow and are stacked in one thermal effects term (19f). These denominations are derived from the work of Bolotnov *et al.* [9]. It is worth noting that these notations are linked to the mathematical writing of the term and may differ from physical behaviours.

Turbulent production

$$\Pi = \int_{\underline{k}} -\Re \left[\widehat{v}_x^* \widehat{u}_y' \frac{\partial \langle V_x \rangle}{\partial y} \right] d\underline{k} \quad (19a)$$

Triadic in-plane term

$$T_{in} = \int_{\underline{k}} -\Re \left[\sum_i \sum_{j=x,z} \widehat{v}_i^* \frac{\partial \widehat{v}_i' u_j'}{\partial x_j} \right] d\underline{k} \quad (19b)$$

Triadic inter-plane term

$$T_{it} = \int_{\underline{k}} -\Re \left[\sum_i \widehat{v}_i^* \frac{\partial \widehat{v}_i' u_y'}{\partial y} \right] d\underline{k} \quad (19c)$$

Pressure in-plane term

$$\Phi_{in} = \int_{\underline{k}} -\Re \left[\sum_{i=x,z} \widehat{v}_i^* \left(b \frac{\partial \widehat{P}}{\partial x_i} \right) \right] d\underline{k} \quad (19d)$$

Pressure inter-plane term

$$\Phi_{it} = \int_{\underline{k}} -\Re \left[\widehat{v}_y^* \left(b \frac{\partial \widehat{P}}{\partial y} \right) \right] d\underline{k} \quad (19e)$$

Thermal effect term

$$\Gamma = \int_k -\Re \left[\sum_i \left(\widehat{v}'_y{}^* \widehat{u}'_y \frac{\partial \langle V_y \rangle}{\partial y} + \langle U_y \rangle \frac{\partial \frac{1}{2} \widehat{v}'_i{}^* \widehat{v}'_i}{\partial y} + \frac{1}{2} \widehat{v}'_i{}^* \widehat{v}'_i \frac{\partial \langle U_y \rangle}{\partial y} - \sum_j \frac{1}{2} \widehat{v}'_i{}^* \left(\widehat{v}'_i \frac{\partial u'_j}{\partial x_j} \right) + \sum_j \frac{1}{2} \widehat{v}'_i{}^* \langle V_i \rangle \frac{\partial \widehat{u}'_j}{\partial x_j} \right) \right] d\mathbf{k} \quad (19f)$$

Viscous effect

$$D = \int_k \Re \left[\widehat{v}'_i{}^* F_k^y \left\{ b \frac{\partial}{\partial x_j} \left[\mu \left(\frac{\partial U_i}{\partial x_j} + \frac{\partial U_j}{\partial x_i} \right) \right] - b \frac{2}{3} \frac{\partial}{\partial x_i} \left(\mu \frac{\partial U_j}{\partial x_j} \right) \right\} \right] d\mathbf{k} \quad (19g)$$

125

In the following sections, the averaged kinetic energy $\langle E_c \rangle = \frac{1}{2} \langle \widehat{v}'_i{}^* \widehat{v}'_i \rangle$, statistical average of the instantaneous kinetic energy E_c , will be studied. This quantity is independent of time. Its evolution equation can be written as:

$$\frac{\partial \langle E_c \rangle (k, y)}{\partial t} = \langle \Pi \rangle (k, y) + \langle T_{in} \rangle (k, y) + \langle T_{it} \rangle (k, y) + \langle \Phi_{in} \rangle (k, y) + \langle \Phi_{it} \rangle (k, y) + \langle \Gamma \rangle (k, y) + \langle D \rangle (k, y) = 0 \quad (20)$$

Consequently, the statistical average of each term of equation (19) will be analysed and computed.

3. Simulated datasets and validation

3.1. Channel flow configuration

130 A rectangular channel flow is studied, as represented by figure 1. The flow is periodic along the streamwise x direction and spanwise z direction. The channel walls are normal to the y direction. The top wall is at constant temperature T_2 and the bottom wall at temperature $T_1 = 293$ K. The temperature ratio between the hot and cold wall is $T_r = T_2/T_1$. We studied configurations of
135 temperature ratios $T_r = 1$ and $T_r = 2$. The dimensions of the channel in the x , y and z directions are denoted L_x , L_y and L_z respectively. The domain size is: $L_x = 4\pi h$, $L_y = 2h$ and $L_z = 2\pi h$ with $h = 15$ mm.

Because of the temperature gradient, the turbulent Reynolds numbers Re_τ at each sides of the channel are different, with the turbulent Reynolds number at

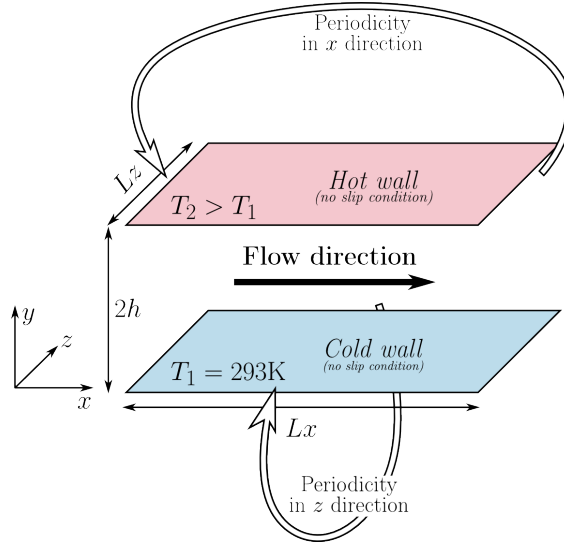


Figure 1: Biperiodic anisothermal channel flow

140 the cold side being greater. Thus, the mean turbulent Reynolds number Re_τ^m is defined as the average of the turbulent Reynolds number calculated at the cold side and at the hot side. Simulations were carried out in various configurations as described in table 1. In this table, the number of grid points in the direction i is denoted N_i and the cell size in wall-units Δi^+ . The wall-units scaling is based on the turbulent Reynolds number of the cold side, since it is more restrictive.

Two mean turbulent Reynolds number were selected (180 and 395) as well as temperature ratios of 2 and 1 for the incompressible limit case. Hence, four configurations are simulated in total. The computational cost increase with Reynolds number restricts the mesh refinement at $Re_\tau^m = 395$ compared to the simulations at $Re_\tau^m = 180$. As the temperature gradient induces a local Reynolds number increase, the simulations performed are more precise in the isothermal case for similar reasons. The cell sizes in wall-units in the wall-normal direction is increased by 0.25 from an isothermal simulation to the anisothermal equivalent and 0.5 from low Reynolds number to high Reynolds number.

155 Since the simulations at $Re_\tau^m = 180$ are less expensive in terms of com-

Name	Type	Re_τ	T_τ	L_x	L_z	Δx^+	Δz^+	Δy^+	N_x	N_y	N_z
180-1	DNS	184	1	$4\pi h$	$2\pi h$	6	3	0.25-2.3	382	300	382
180-2	DNS	270-108	2	$4\pi h$	$2\pi h$	17.6	5.9	0.5-7.8	192	140	288
395-1	LES	395	1	$4\pi h$	$2\pi h$	11	11	0.75-7.5	448	200	224
395-2	LES	542-221	2	$4\pi h$	$2\pi h$	14	14	1-7.5	448	200	224

Table 1: List of simulations and mesh parameters.

putational cost, we were able to capture the fine flow behavior using direct numerical simulation. This contrasts with the simulations at $Re_\tau^m = 395$. At high Reynolds number, the calculation power and mesh sizes required for a full DNS would be excessive. Large eddy simulation appears as the preferable alternative. With the subgrid scales modelling, the simulations can yield accurate statistics despite coarser meshes relatively to the turbulent Reynolds number. Therefore, DNS is used at $Re_\tau^m = 180$ and LES at $Re_\tau^m = 395$.

3.2. Numerical set up

The resolution of the low Mach equations involves a finite volume solver. A third order Runge–Kutta is used for time derivatives. A fourth order centered scheme is used for momentum convection. A third order QUICK scheme (quadratic upstream interpolation for convective kinetics [32]) is used for temperature convection. TrioCFD is used to perform the simulations [33].

As there is no mean pressure gradient in the channel flow because of periodic boundary conditions, a streamwise volume force F is added to keep the mass flow rate constant. For both the DNS and the LES, the driving force is regulated through the mass flow rate second derivative:

$$F_{t+1} = F_t + C_0 \frac{D_{\text{target}} - 2D_t + D_{t-1}}{\Delta t} \quad (21)$$

with C_0 a damping constant, D the mass flow rate, D_{target} the targeted mass flow rate and $t - 1$, t and $t + 1$ indices related to the previous, current and next time step respectively. Walls have no slip condition. The initial velocity

field is parabolic in the streamwise direction and sinusoidal in the wall-normal direction and permits to initiate the turbulence.

Four meshes were adopted as shown in table 1. Each mesh is regular in both homogeneous directions. The grid points in the wall-normal direction follow a hyperbolic tangent transformation:

$$y_k = L_y \left(1 + \frac{1}{a} \tanh \left[\left(\frac{k-1}{N_y-1} - 1 \right) \tanh^{-1}(a) \right] \right) \quad (22)$$

where a is a constant associated with the mesh dilatation. The precision increase
 175 in the boundary layer compared to an uniform mesh allows the use of the no-slip boundary condition.

3.3. Data collection and filtering for spectral analysis

The data required to compute the different terms of equation (19) is acquired during the simulation. The terms of equation (19) are calculated at each wall-normal coordinate at particular time steps then time averaged. A time-sampling corresponding to 20 timesteps was used. The time average is performed over a total duration of $12.3 t_c$, where $t_c = h/U_\tau$ is the characteristic timescale of the simulation. This is sufficient for the spectral statistics to converge. The Fourier transform is numerically computed as:

$$\widehat{g}(k_{x,m}, y, k_{z,n}) = \frac{1}{N_x N_z} \sum_{p=0}^{N_x-1} \sum_{k=0}^{N_z-1} g(x_p, y, z_k) \exp \left(-2\pi i \left(\frac{mp}{N_x} + \frac{kn}{N_z} \right) \right) \quad (23)$$

This is done using the FFTW C subroutine library [34].

A low pass filter is applied to the spectral data. This could be done because
 180 a clear separation between high frequency noise and the wanted signal appears in the Fourier transform of the spectral data. This can be seen as a moving-average that takes into account 2D wavenumber vectors of nearby norms. The energy transfer processes are direction-dependant, that is not identical in x and z directions. It is thus of great importance that this averaging does not favor a
 185 particular direction.

3.4. Validation of the mean field profiles

The numerical method described above has been validated with regard to DNS using the results of Kim *et al.* [35] in the isothermal case. The simulation performed by Kim *et al.* [35] has a turbulent Reynolds number of 180. It has been compared to our DNS in the same conditions in figures 2 and 3. The following standard **scaling** is used:

$$y^+ = Re_\tau \frac{y}{h} \quad (24a)$$

$$U^+ = \frac{\langle U \rangle}{U_\tau} \quad (24b)$$

where U_τ is the wall friction velocity. Similarly to (24b), each RMS quantity in figure 3 is **scaled** by the friction velocity U_τ and the velocity correlation by U_τ^2 . The two simulations give nearly identical results for both mean and fluctuating quantities. Similar validation has been performed regarding LES
190 fluctuating quantities. Similar validation has been performed regarding LES with the results of Moser *et al.* [36] in the isothermal case at $Re_\tau = 395$ (not shown here). This validates our numerical method at the incompressible limit for both DNS and LES.

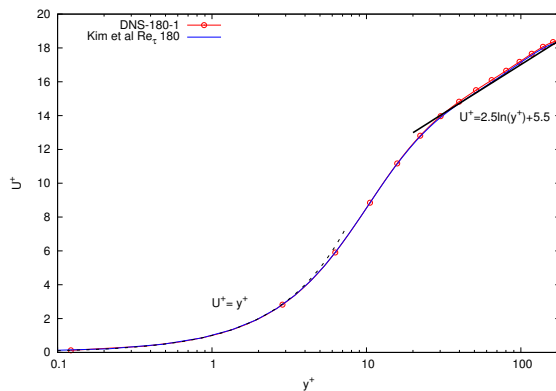


Figure 2: Mean longitudinal velocity comparison with direct numerical simulation of Kim *et al.* [35] at $Re_\tau = 180$.

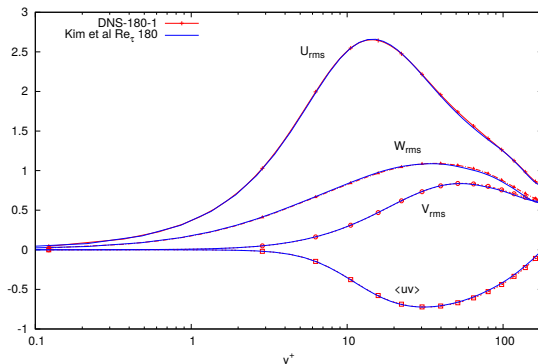


Figure 3: Velocity fluctuations comparison with direct numerical simulation of Kim *et al.* [35] at $Re_\tau = 180$.

3.5. Validation of the spectra measurements

As written in 2.4, the TKE evolution equation decomposition follows Bolotnov *et al.* [9] decomposition and allows comparison on isothermal flow spectra. Figure 4 compares the turbulent production (equation (19a)), figure 5 the in-plane triadic transfer term (equation (19b)) and figure 6 the inter-plane transfer term (equation (19c)). All these figures use the same normalisation as Bolotnov and the colors scales are identical. **The following scaling is used for the wave number:**

$$k^+ = \frac{kh}{Re_\tau} \quad (25)$$

195

The comparison reveals that our results match with those of Bolotnov with respect to magnitude and global shape for all terms. The turbulent production (figure 4) is centered on the same area ($0.056 < k^+ < 1$ and $10 < y^+ < 17$) and decreases at the same rate.

200

For the in-plane triadic transfer (figure 5), our results are in agreement with the two major areas found by Bolotnov: one negative centered on $k^+ = 0.08$ and $y^+ = 12$, and one positive centered on $y^+ = 18$ and $k^+ = 0.178$. A low magnitude positive area appears in our simulation around $k^+ = 0.02$ and $y^+ = 13$ whereas the figure of Bolotnov suggests that the term tends to zero

205 around this area. However, it is worth noting that a small positive area appears in the data provided by Bolotnov *et al.* (see figure 23 of [9]). Consequently, our figure 5(a) that contains more contour values than the figure 5(b) from Bolotnov gives some information of figure 23 in Bolotnov *et al.* [9]. Furthermore, our results and those of Bolotnov that indicate a positive area at large scales
 210 are consistent with the backscatter effect identified in wall-bounded turbulence [37, 38, 39].

At last, the inter-plane triadic transfer term has same magnitude and comprises the same two main parts which are: a positive centered area on $k^+ = 0.056$ and $y^+ = 5.6$ and a negative one at $k^+ = 0.08$ and $y^+ = 15$. Some differences
 215 can be observed in our simulation: the high value of low k^+ are stronger and the negative area is less spread.

These results validate our simulation and its data-processing at the incompressible limit.

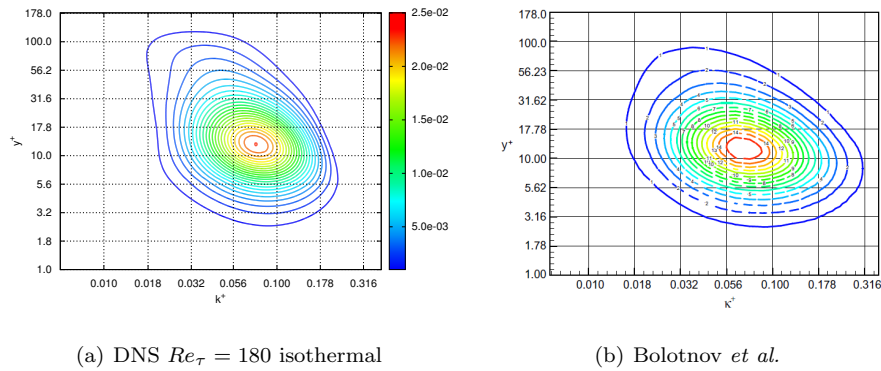


Figure 4: Comparison of turbulent production spectra.

4. Isothermal energy transport of distinctive Reynolds numbers

220 We start this section by making a remark on the individual transfer terms reported in figures 7 to 17. For each set, a vertical reading gives a thermal

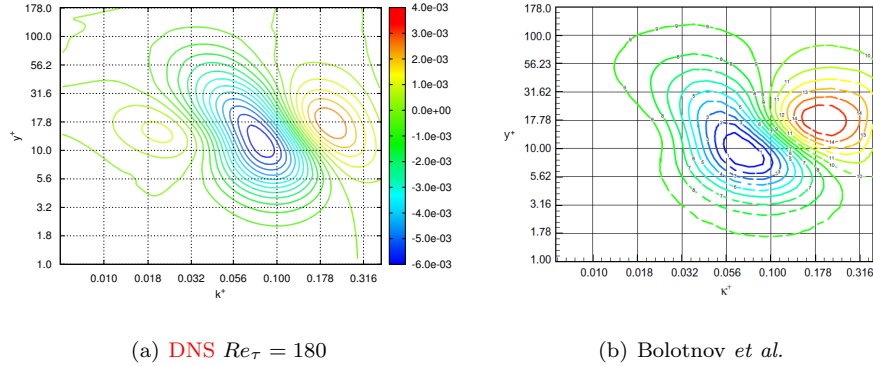


Figure 5: Comparison of in-plane triadic transfer spectra.

comparison (isothermal case, cold and hot sides for the anisothermal case) at a constant Reynolds number, while a horizontal reading gives a comparison between Reynolds Number for a same thermal configuration. Figure 7 and figures 8 – 17 are scaled by $U_\tau \nu$ and by the maximum of production in the isothermal case for each Reynolds number, respectively. The wave number is scaled with the half-height of the channel h . The analysis done in this section requires only the middle panel of figures 7 to 17.

4.1. Isothermal turbulent spectra at low Reynolds number

At first, the turbulent kinetic energy is plotted on figure 7(c). As expected, the maximum of TKE is around $y^+ = 11$ for the larger scales ($kh < 2$). Compared to the high scales, the energy of the small scales is divided by more than 10^{10} . This ensures the capture of the essential phenomena from the largest scale to the smallest. The significant parts of TKE and transfer mechanisms are not filtered in the case of LES, as they are located beyond the cutoff frequency which is around $kh = 20$ (the filter is only visible at high Reynolds number).

The TKE production (figure 8(c)) is limited at $kh < 4$ in term of the spectral scales and at $y^+ > 5$ in term of the wall distance. The maximum of the production is close to the maximum of TKE. The scale range of the production

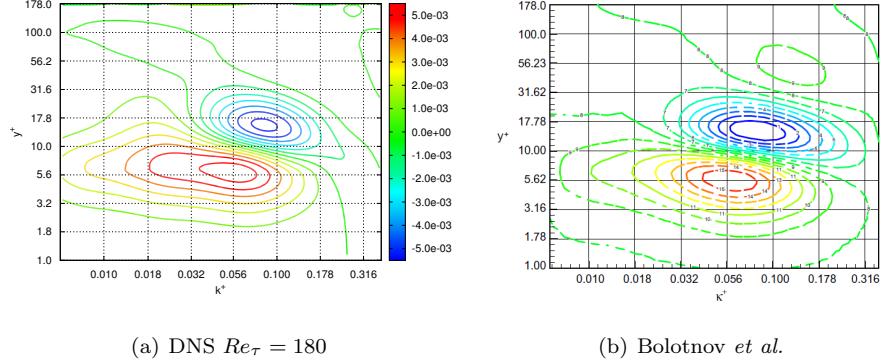


Figure 6: Comparison of inter-plane triadic transfer spectra.

240 decreases with the distance from the wall. At $y^+ = 40$, the production scale range is $0.6 < kh < 2$ and the scale is $0.6 < kh < 4$ at $y^+ = 10$. The production tends to zero near $y^+ = 100$.

The total energy transfer (figure 9(c)) is characterized by an inverse cascade from intermediary spectral scales to the large scales. The intermediary scales where the energy is removed are located near the production term peak area. 245 Note that the size of structures receiving energy is longer than the channel size ($kh > 1$). The energy transfer occurs between scales with a scale ratio greater than two, which is characteristic of non-local transfers [40]. In global point of view, the energy is transferred closer to the wall, a mechanism removing the 250 energy to the streaks.

As expected, the viscous effect (figure 10(c)) balances the total energy transfer mechanism. The energy is taken from the viscous layer at large scales and tends to zero at the small scales. This may correspond to the friction created by the streaks close to the wall.

255 The total energy transfer is the sum of all triadic and pressure terms. Let us now study them individually

The triadic in-plane term (figure 11(c)) is composed of three areas around $y^+ = 20$. The first and last areas are positive with smaller y^+ ranges but the

middle one is negative with larger spectral and y^+ ranges. This term, therefore,
 260 is involved with both the inverse and direct transfer of energy in the spectral
 scale. We can see a link between the wall distance and the scale of the negative
 area. This behaviour is observed for all terms and for all areas with $y^+ > 10$.

The inter-plane transfer term (figure 12(c)) is a mixed transfer term. The
 energy is transferred both in the wall and scale directions from the negative area
 265 in a similar manner to the total transfer mechanisms. The energy is received at
 both the large scales and close to the wall ($5 < y^+ < 10$). Note that this transfer
 has a stronger magnitude than that of the in-plane term, hence, dominates the
 behaviour of the the total triadic term (figure 13(c)).

In contrast with the triadic terms, the pressure terms (figures 14(c) and
 270 15(c)) transfer energy between wall distances without scale shift (the transfer
 is centered on $kh = 0.7$). For the inter-plane term, the energy is taken in the
 central part of the flow and transferred around $y^+ = 45$. For the in-plane term,
 the transfer occurs from $y^+ = 45$ to the near wall region.

The total pressure term (figure 16(c)) is composed of four areas: a positive
 275 area near the wall, a negative area near $y^+ = 20$, a positive area near $y^+ = 60$
 and a negative area close to the center of the channel. Globally, the energy is
 transferred towards the wall with little scale shift. The total triadic transfer
 and the total pressure terms play a distinctive role. As the total pressure term
 is very small in front of the total triadic term, the total energy transfer is nearly
 280 identical to the total triadic term, and thus of the inter-plane triadic term.

4.2. Reynolds number effects on isothermal turbulent spectra

The impact of Reynolds number variations on the turbulent kinetic energy
 balance terms will be investigated using the isothermal results at $Re_\tau = 180$
 and $Re_\tau = 395$.

285 To begin with, the turbulent kinetic energy and TKE evolution terms tend
 to have wider wave space and y^+ ranges at high Reynolds number. At the same
 time, the mechanisms are more distributed in the spectral space. The spatial
 extent of production stretches both into the central channel area and closer

to the wall at $Re_\tau = 395$ when compared to the $Re_\tau = 180$ case, increasing
 290 from $5 < y^+ < 50$ (figure 8(c)) to $3 < y^+ < 300$ (figure 8(d)). Its spectral
 space extent has also increased from $0.7 < kh < 3$ to $0.4 < kh < 6$. Similar
 behaviour is observed for total transfer, in-plane and inter-plane triadic and
 pressure transfer terms.

Meanwhile, the turbulent scales shift with wall distance at high Reynolds
 295 number. The operative scales are larger far from the wall and smaller closer to
 the wall. The negative area range of the in-plane pressure transfer term (figure
 14) is $0.4 < kh < 1$ at $y^+ = 200$ and $1 < kh < 2$ near $y^+ = 60$. Such scale shift
 is however not present at $Re_\tau = 180$. The scale shift increases with Reynolds
 number is followed by all transfer terms and production.

300 It may be also be observed that the magnitude of the pressure transfer term
 as a proportion of the total transfer is lower at $Re_\tau = 395$. This made the
 pressure relatively (but not physically) less important than triadic effect.

Finally, the turbulent scales involved in the transfer are less selected at high
 Reynolds number. At low Reynolds number, the in-plane triadic transfer (figure
 305 11(c)) occurs in 3 very localized areas. Conversely, at high Reynolds number,
 the areas are no more separated in the wavenumber space (figure 11(d)). This
 is also true for triadic inter-plane transfer term and the total transfer term.

5. Anisothermal turbulent spectra of distinctive Reynolds numbers

5.1. Anisothermal turbulent spectra at low Reynolds number

310 In this subsection, the effect of thermal gradient is described by comparing
 an anisothermal flow at $Re_\tau = 180$ against that from the isothermal simulation
 in last section. We will defer the investigation of the Reynolds number variations
 in an anisothermal setting to the next subsection.

The thermal effect term (figure 17, left panel), which is negligible in isother-
 315 mal simulations, now has the same magnitude as the pressure transfer terms
 ($\sim 10\%$ of total transfer term). This term is negative at the hot side and posi-
 tive at the cold side. This can be seen as an energy transfer from hot to cold

side. One explanation is based on the mean vertical velocity, which is directed to the cold side. In the thermal effect term (equation (19f)), one gets the advection of turbulent kinetic energy by the wall-normal velocity $\langle U_y \rangle \frac{\partial \frac{1}{2} \widehat{v}_i^* \widehat{v}_i^*}{\partial y}$. This term transfers TKE away from the wall at the hot side and towards the wall at the cold side.

Recall that the local Reynolds number is directly impacted by the thermal gradient. It is interesting that the terms at the hot side have larger magnitude than those at the cold side. The opposite behaviour would have been expected as the temperature gradient reduces the local Reynolds number at the hot side. Particular care should be taken in the interpretation of these amplitudes, as these differences do not necessarily apply to the total integrated values. On many terms, the hot side has a stronger magnitude than the cold side, but due to the lower wave number range of active areas the total energy handled is actually lower than at the cold side. We can observe this phenomenon for the triadic inter-plane transfer (figures 12(a) and 12(e)). The hot side negative area has a two times larger amplitude than the cold side. At the same time, the negative area with maximum values has a very small wave number range at the hot side and a large one at the cold side.

The in-plane pressure term (figures 14(a) and 14(e)) is heavily modified by the temperature gradient. The behaviour of the hot side is similar to the isothermal case with a positive area close to the wall and a negative area near the center of the channel. At the cold side, an additional positive area appears at large scales near $y^+ = 100$. This asymmetry between the two sides of the channel is not present in the inter-plane pressure term (figures 15(a) and 15(e)). The inter-plane pressure term is larger than its in-plane counterpart.

The total pressure term is modified as well (figures 16(a) and 16(e)). The positive area located near $y^+ = 60$ in the isothermal case (figure 16(c)) has vanished at the hot side (figure 16(e)), leaving just a negative one from $y^+ = 10$ to the center of the channel. Conversely, at the cold side of the channel (figure 16(a)), the positive area is intensified in magnitude and increased in size.

Finally, the thermal gradient induces a Reynolds number variation between

the flows at different sides of the channel. Compared to the cold side, the terms
350 at the hot side are contracted, losing small scales. This is easily observable on
the in-plane triadic term (figures 11(a) and 11(e)). For the TKE spectra, the
small scales at the hot side have lower values while the large scales have the
same energy level as that at the cold side. The shorter spectral range in the hot
side is a direct consequence of a reduced local Reynolds number.

355 5.2. Reynolds number effects on anisothermal turbulent spectra

We now consider the effects of Reynolds number variations on the turbulent
kinetic energy balance terms using the anisothermal results at both $Re_\tau = 180$
and $Re_\tau = 395$. The impact of the Reynolds number at both sides of the
channel as well as the interplay between the temperature gradient and the mean
360 Reynolds number must be considered.

The significant influence of increased Reynolds number is evident when the
left and right panels of Figs. 7 – 17 are compared. At high Reynolds number, the
anisothermal spectra largely experience a combined effect from the temperature
gradient and the Reynolds number. The amplitudes of TKE evolution terms
365 are intensified at both sides of the channel by the temperature gradient. The
amplitudes are often far larger in the anisothermal spectra than their isothermal
counterpart.

In many cases, the wave space and spatial extents of the TKE evolution terms
also seem to increase with the temperature gradient. Such analysis should be
370 taken with care, as terms are not more distributed in wave number space but
just appear larger due to the higher amplitude.

The triadic in-plane term (figures 11(b) and 11(f)) evolves slightly differently
with Reynolds number in the isothermal and anisothermal case. The positive
area at large scales disappears almost completely in the isothermal case, whereas
375 it remains significant in the anisothermal case.

Even at the $Re_\tau = 395$ case, the near wall region of the hot and cold sides
of the in-plane triadic transfer and of the total pressure term have a different
behaviour. In the in-plane triadic term, the near wall negative area is greater

at the cold side than at the hot side. In the total pressure term, the near wall
380 positive area is greater at the hot side than at the cold side.

6. Conclusion

In this paper, we studied the effect of a strong temperature gradient on turbulent kinetic energy transfer processes in a fully developed channel flow. The analysis uses a variable change based on density square root weighted velocity, suited to the study of variable density flows. An equation of the turbulent
385 kinetic energy spectral budget is obtained, then decomposed to highlight the mechanisms that govern the energy distribution: production, nonlinear transfer and viscous effects. The decomposition also allows simple comparison with the isothermal channel. Direct numerical simulations and large-eddy simulations have been carried out to compute the two dimensional transfer mechanism
390 spectra of each term at both low and high Reynolds numbers. The isothermal simulations confirmed an important inverse energy cascade that transports the energy to the scales bigger than the channel height. The turbulent structures associated with these scales are located near to the wall where the viscous action
395 removes the major part of the turbulent kinetic energy. This behaviour persists under a strong temperature gradient. More significantly, we showed that the existence of the wall and temperature gradient introduced significant new process in turbulent kinetic energy transfer independently of the mean turbulent Reynolds number. At high Reynolds number, the channel flow is split between
400 two distinctive turbulent behaviours following the side of the channel. At the cold side, the temperature gradient increases the local turbulent Reynolds number and turbulence is intensified compared to the isothermal case. At the hot side, the high temperature reduces the local turbulent Reynolds number but the temperature gradient has an opposite effect, creating turbulence. This leads to
405 a counter-intuitive increase of turbulent kinetic energy processes at the hot side. Furthermore, a non-isothermal transfers accounting for 10% of the total energy transfer moves energy from the hot side to the cold side following the mean

vertical velocity.

Acknowledgment

⁴¹⁰ The authors gratefully acknowledge the CEA for the development of the TRUST platform. This work was granted access to the computer resources of CINES under the allocation 2014-c20142a5099 and 2015-c20152a5099 made by GENCI. The last author would like to dedicate this work to Dr. Chuck Leith in respectful acknowledgement of his exemplary scientific career.

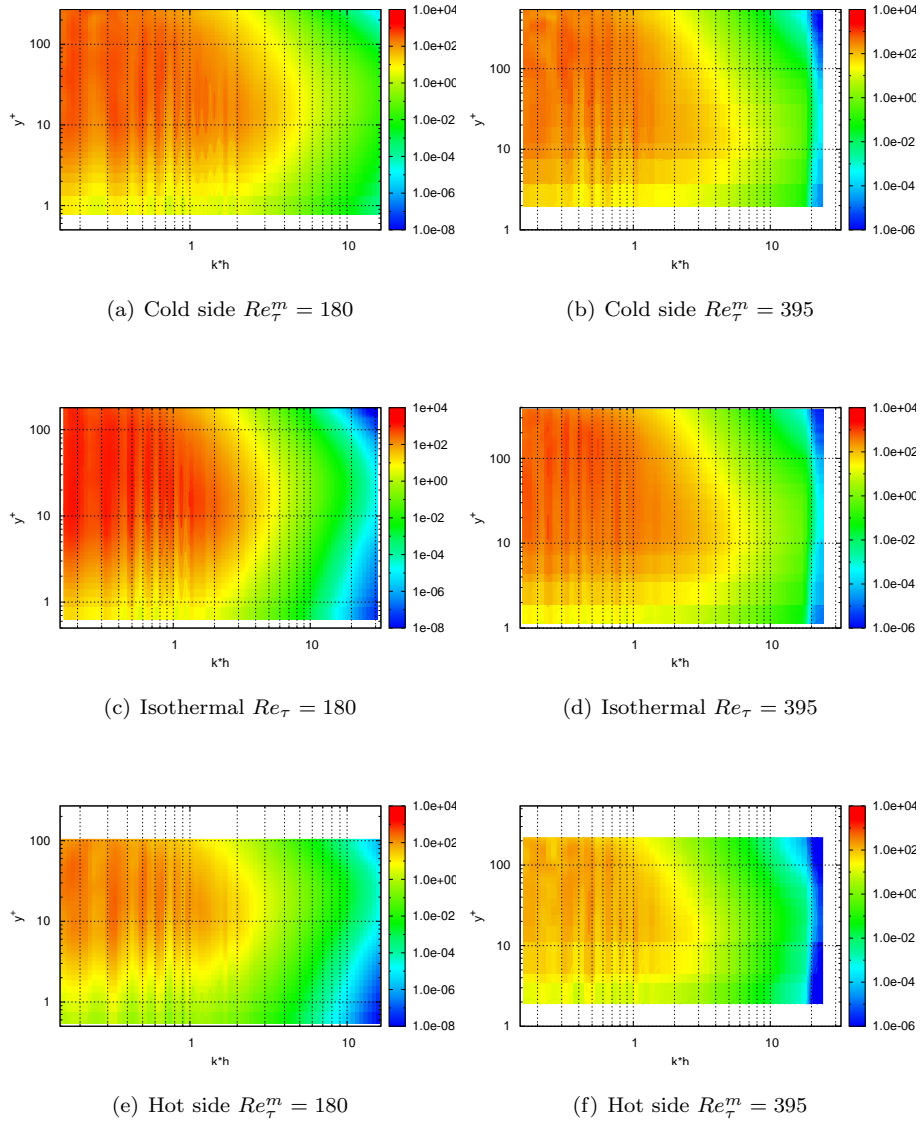


Figure 7: Turbulent kinetic energy, divided by $U_\tau \nu$.

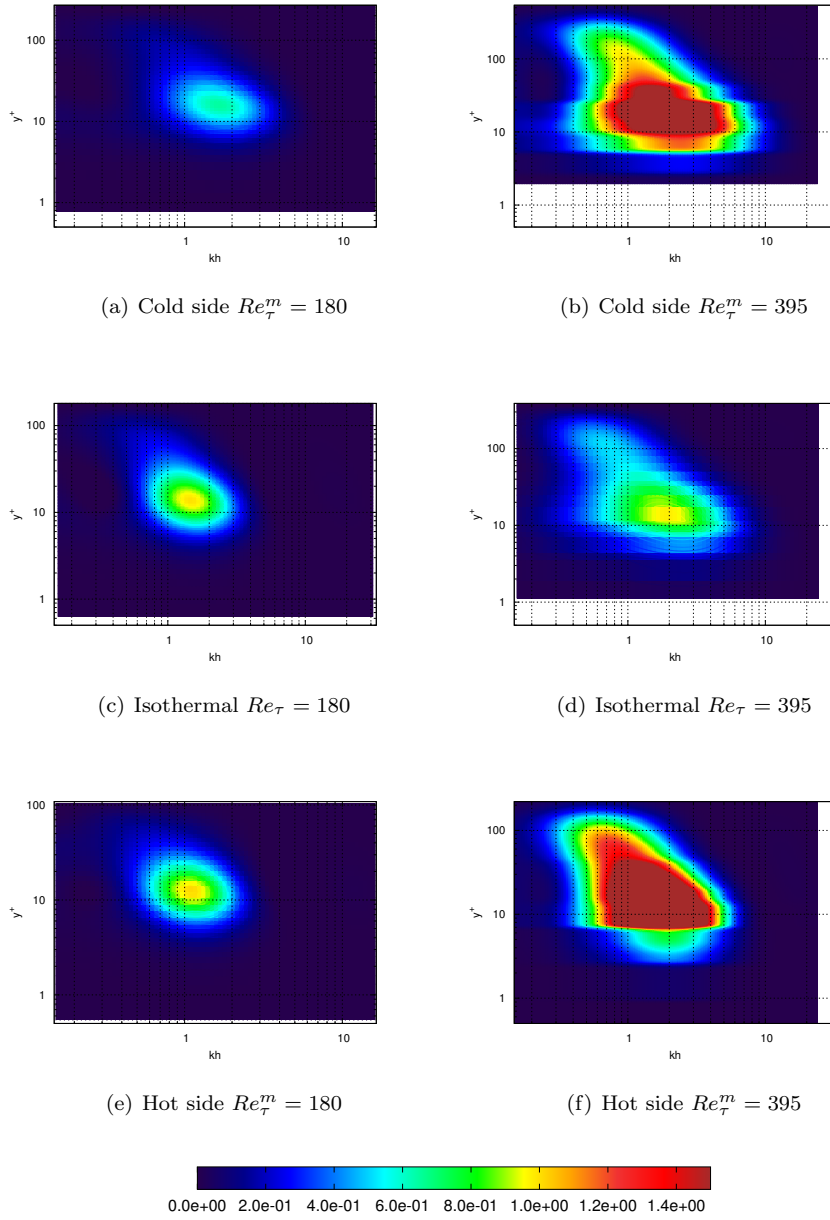


Figure 8: Turbulent production term.

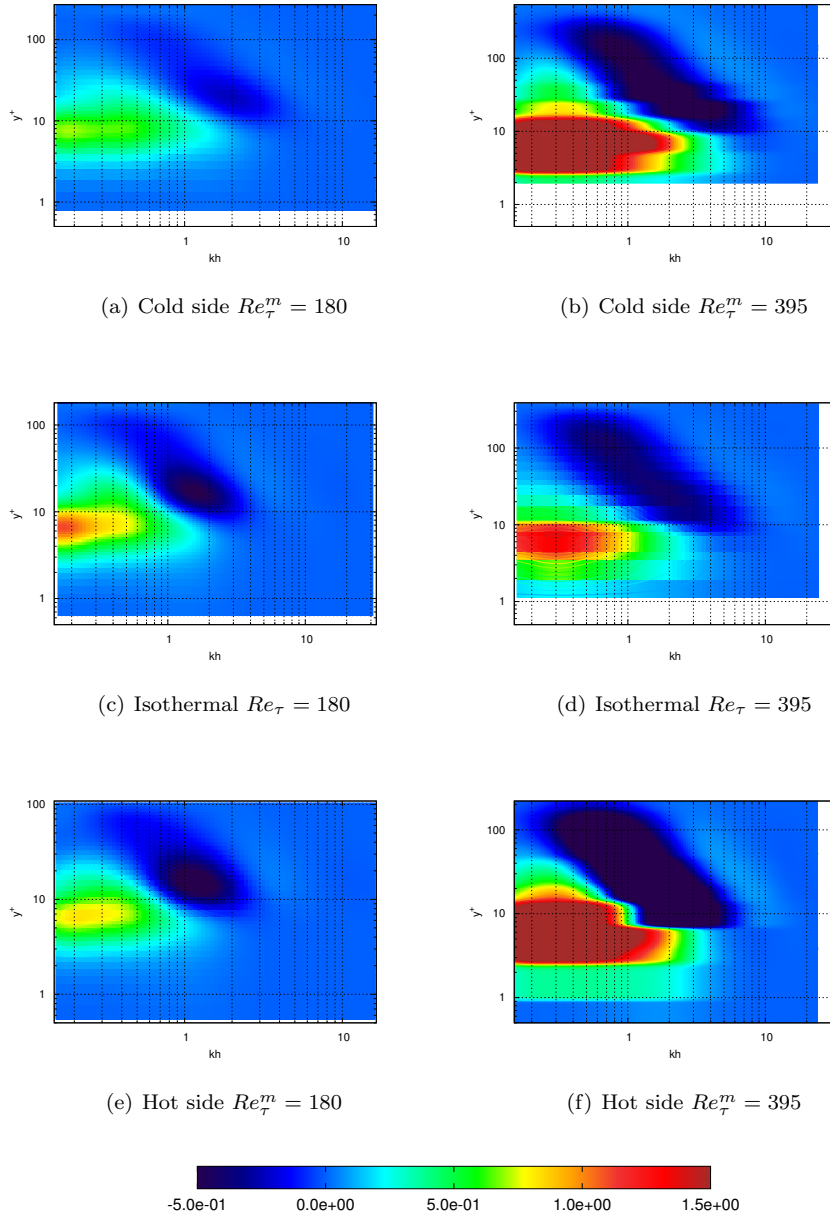
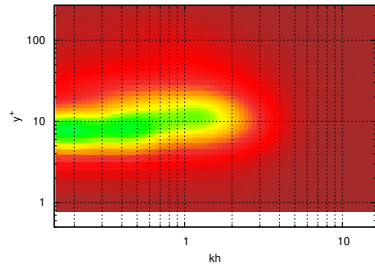
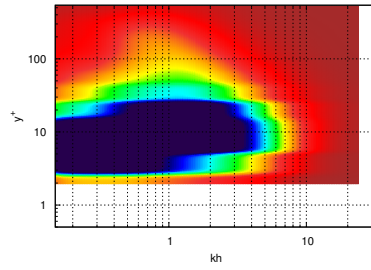


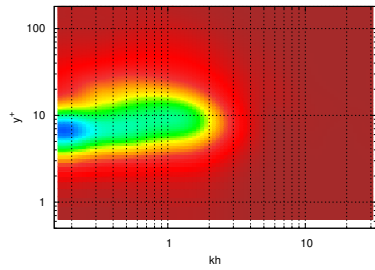
Figure 9: Total transfer (total triadic term and total pressure term).



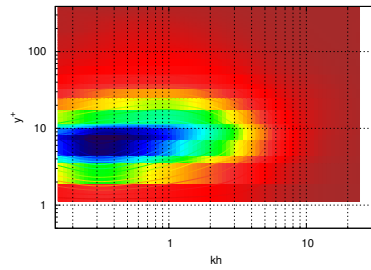
(a) Cold side $Re_\tau^m = 180$



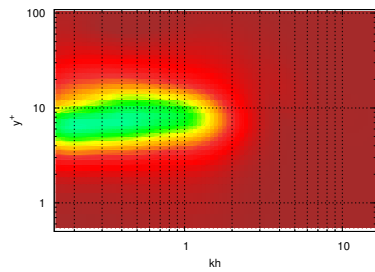
(b) Cold side $Re_\tau^m = 395$



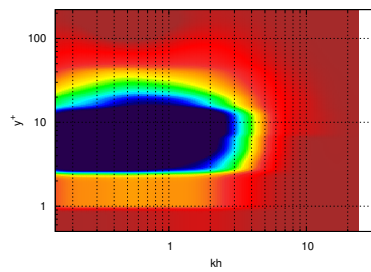
(c) Isothermal $Re_\tau = 180$



(d) Isothermal $Re_\tau = 395$



(e) Hot side $Re_\tau^m = 180$



(f) Hot side $Re_\tau^m = 395$

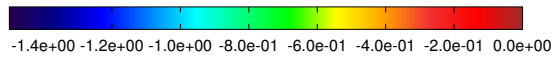


Figure 10: Viscous effect term.

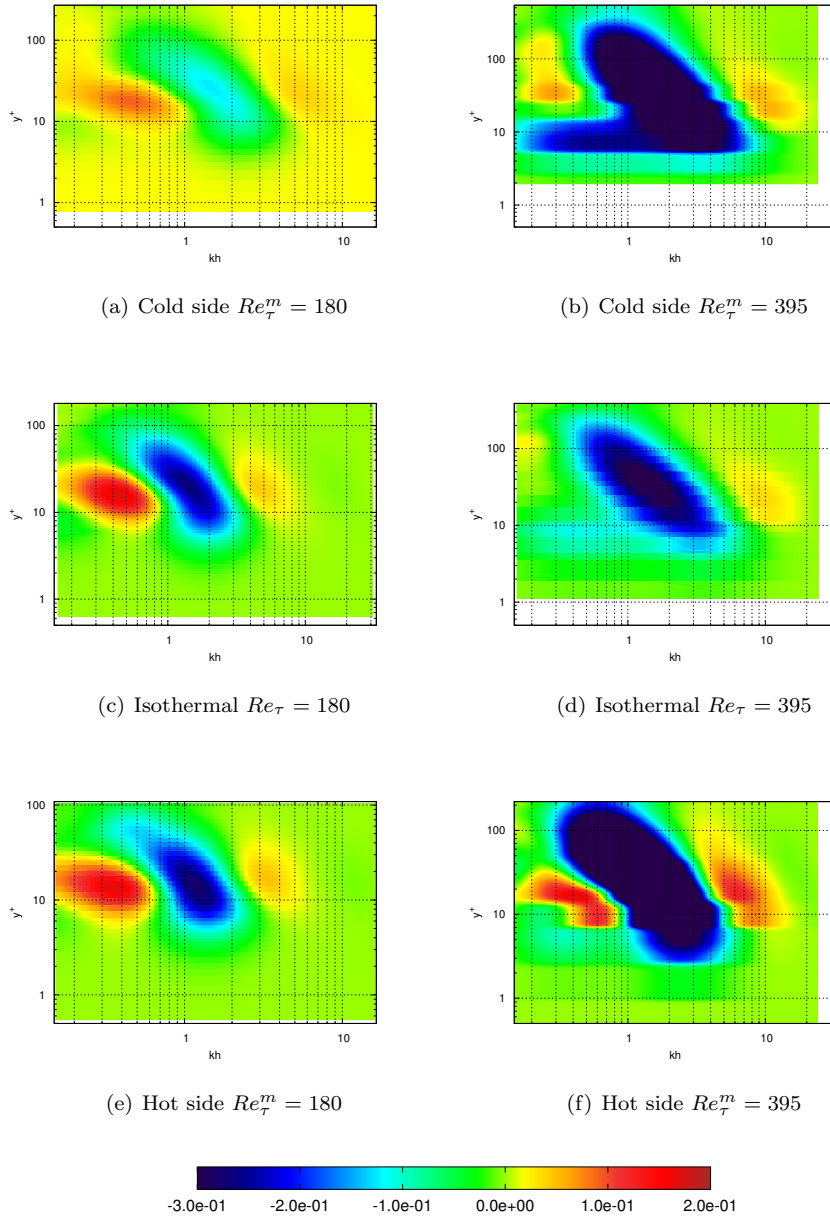


Figure 11: Triadic in-plane term.

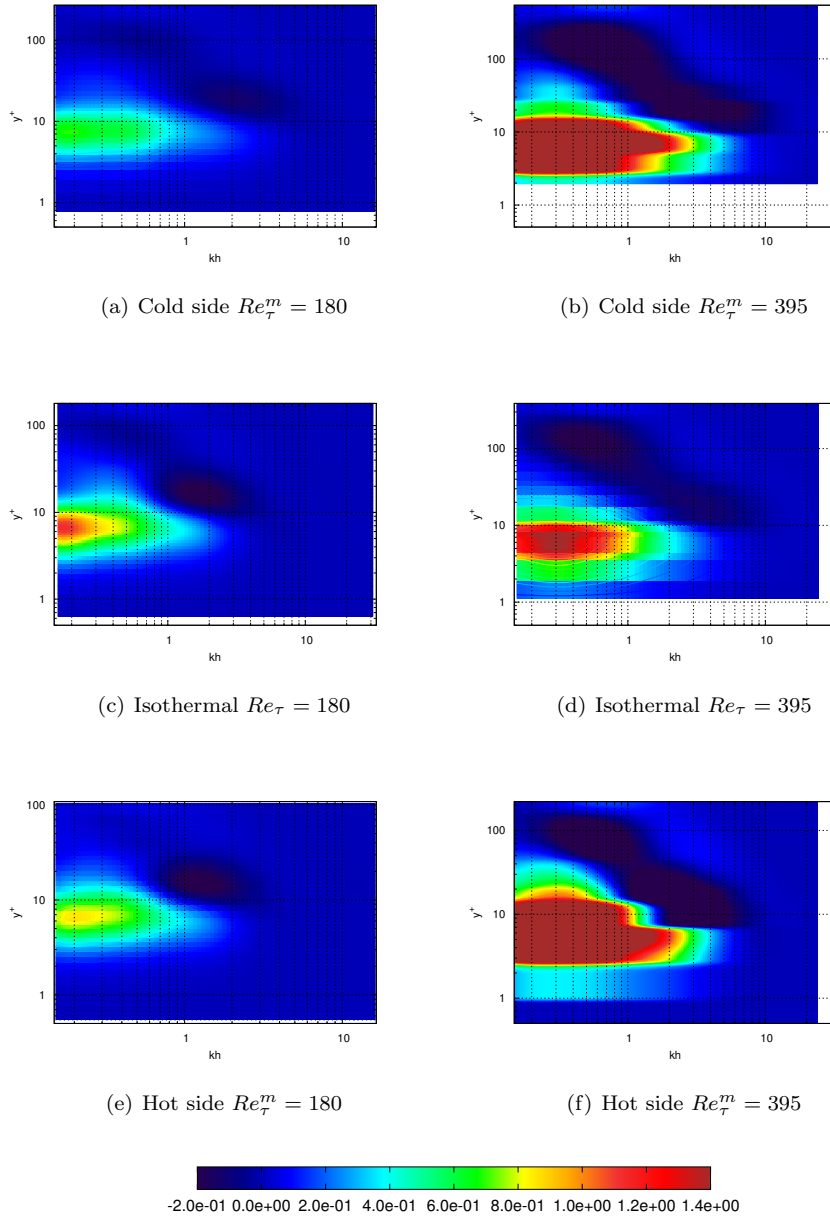


Figure 12: Triadic inter-plane term.

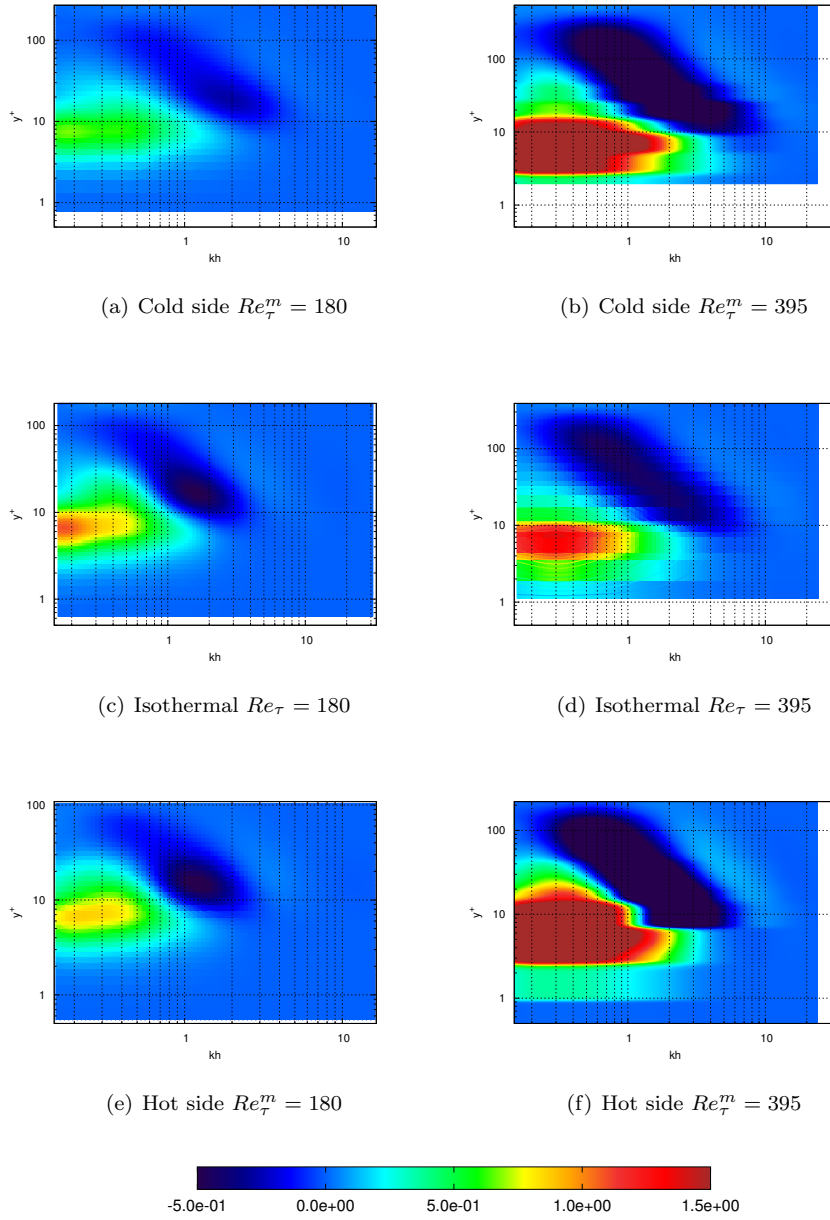


Figure 13: Total triadic term.

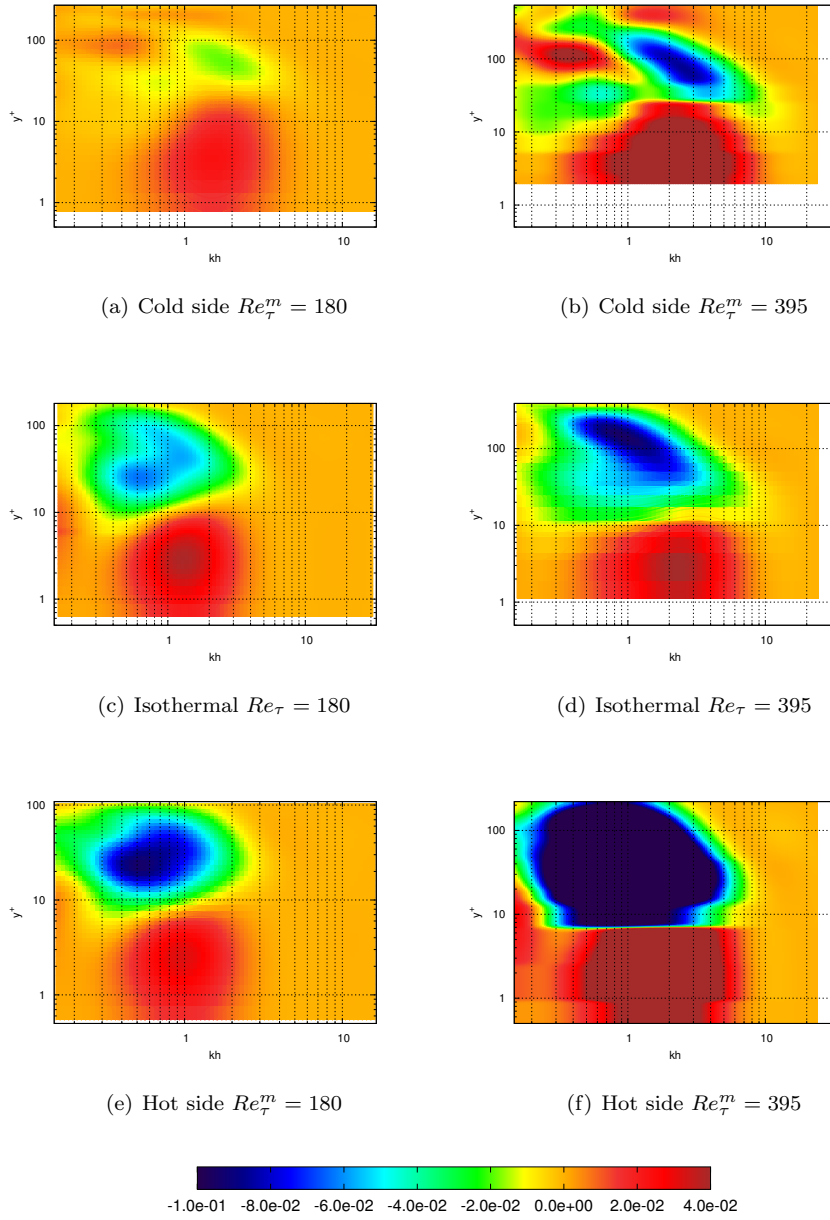
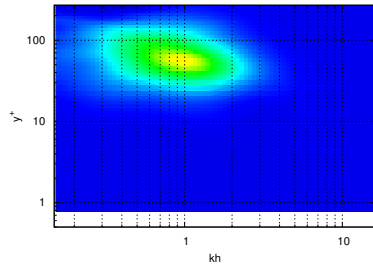
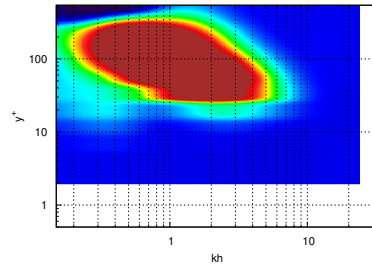


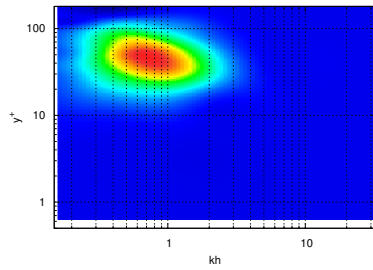
Figure 14: Pressure in-plane term.



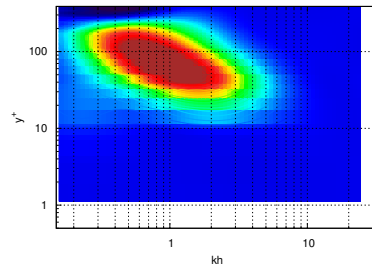
(a) Cold side $Re_\tau^m = 180$



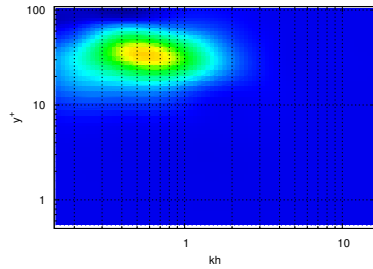
(b) Cold side $Re_\tau^m = 395$



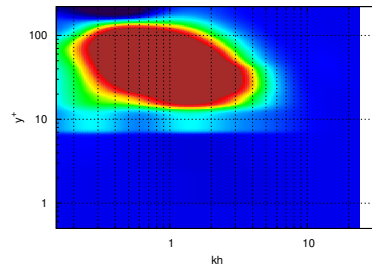
(c) Isothermal $Re_\tau = 180$



(d) Isothermal $Re_\tau = 395$



(e) Hot side $Re_\tau^m = 180$



(f) Hot side $Re_\tau^m = 395$

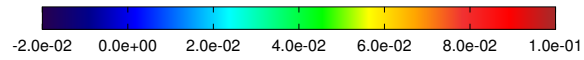


Figure 15: Pressure inter-plane term.

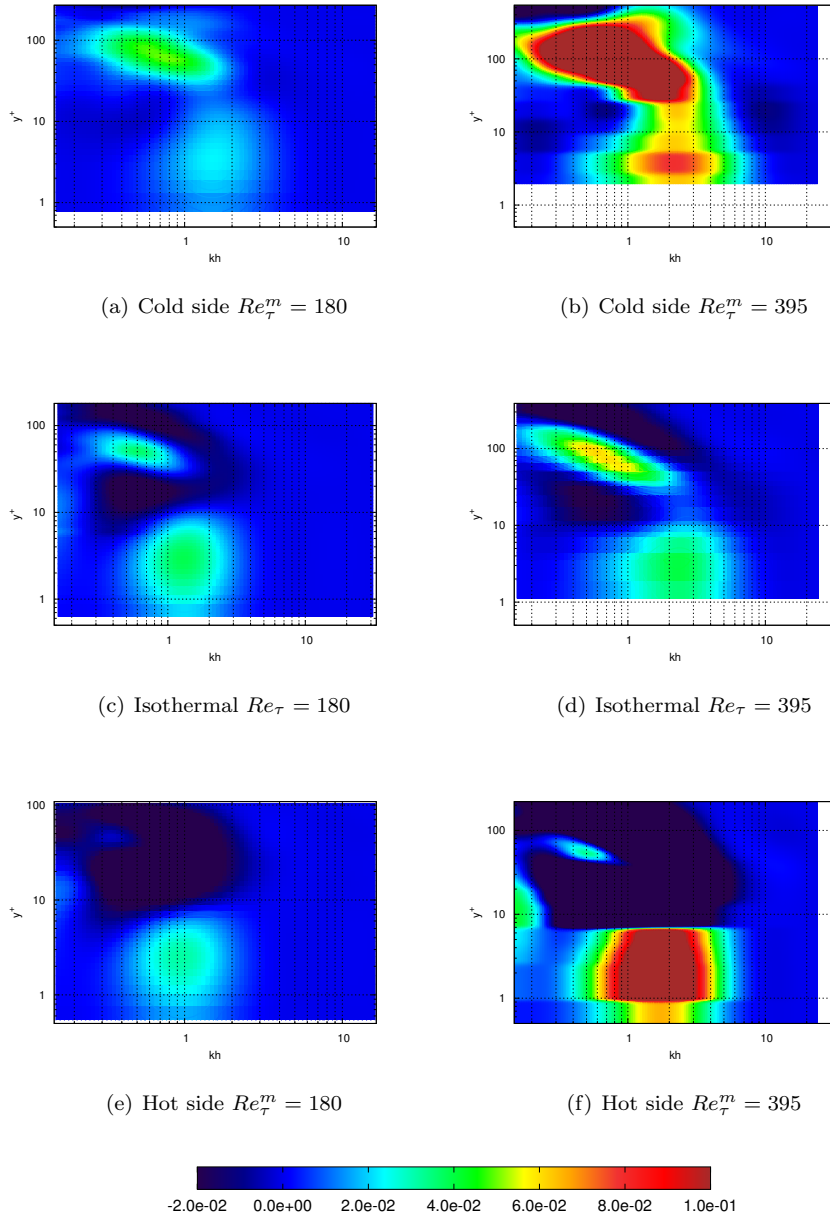


Figure 16: Total pressure term.

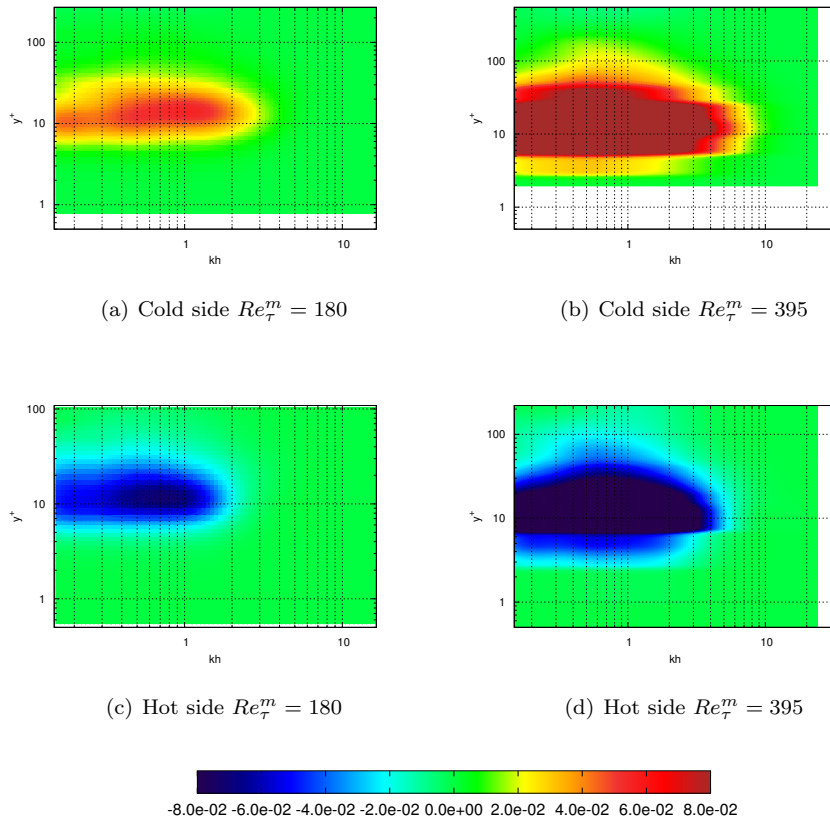


Figure 17: Thermal effects term.

415 **Appendix A. Derivation of the spectral turbulent kinetic energy evolution equation**

We apply a Fourier transform on equation (17). Taking into account the non-periodicity of y direction, the Fourier operator (A.1) is a 2D Fourier transform in the x and z directions. The Fourier transform of a function $g(x, y, z)$ is denoted

420 $F_k^y\{g(x, y, z)\}$ or $\widehat{g}(\underline{k}, y)$ and defined as:

$$F_k^y\{g(x, y, z)\} = \widehat{g}(\underline{k}, y) = \frac{1}{L_x L_z} \int_0^{L_x} \int_0^{L_z} g(x, y, z) \exp(-i\underline{k} \cdot \underline{x}) dx dz \quad (\text{A.1})$$

where $\underline{k} = (k_x, k_z)$ is the 2D wave vector and $\underline{x} = (x, z)$ is the 2D position vector. Let us apply this operator on equation (17):

$$\frac{\partial \widehat{V}_i}{\partial t} = F_k^y \left\{ -\frac{\partial V_i U_j}{\partial x_j} + \frac{1}{2} V_i \frac{\partial U_j}{\partial x_j} - b \frac{\partial P}{\partial x_i} \right\} + F_k^y \left\{ b \frac{\partial}{\partial x_j} \left[\mu \left(\frac{\partial U_i}{\partial x_j} + \frac{\partial U_j}{\partial x_i} \right) \right] - b \frac{2}{3} \frac{\partial}{\partial x_i} \left(\mu \frac{\partial U_j}{\partial x_j} \right) \right\} \quad (\text{A.2})$$

Using a classical Reynolds decomposition, we split the velocity between mean part and fluctuation part ($V_i = \langle V_i \rangle + v'_i$). In addition, the flow homogeneity gives ($\langle U_z \rangle = 0, \frac{\partial \langle f \rangle}{\partial x} = \frac{\partial \langle f \rangle}{\partial z} = 0$). Noticing that:

$$\begin{aligned} \frac{\partial \widehat{V}_i}{\partial t} &= \frac{\partial \widehat{v}'_i}{\partial t} \\ F_k^y \left\{ \frac{\partial V_i U_j}{\partial x_j} \right\} &= \langle V_i \rangle \frac{\partial \widehat{u}'_j}{\partial x_j} + \widehat{v}'_i \frac{\partial \langle U_y \rangle}{\partial y} + \widehat{u}'_y \frac{\partial \langle V_i \rangle}{\partial y} + \langle U_j \rangle \frac{\partial \widehat{v}'_i}{\partial x_j} + F_k^y \left\{ \frac{\partial v'_i u'_j}{\partial x_j} \right\} \\ F_k^y \left\{ V_i \frac{\partial U_j}{\partial x_j} \right\} &= \langle V_i \rangle \frac{\partial \widehat{u}'_j}{\partial x_j} + \widehat{v}'_i \frac{\partial \langle U_y \rangle}{\partial y} + v'_i \frac{\partial \widehat{u}'_j}{\partial x_j} \end{aligned}$$

we obtain:

$$\begin{aligned} \frac{\partial \widehat{v}'_i}{\partial t} &= -\widehat{u}'_y \frac{\partial \langle V_i \rangle}{\partial y} - \langle U_j \rangle \frac{\partial \widehat{v}'_i}{\partial x_j} - \frac{1}{2} \left(\langle V_i \rangle \frac{\partial \widehat{u}'_j}{\partial x_j} + \widehat{v}'_i \frac{\partial \langle U_y \rangle}{\partial y} - v'_i \frac{\partial \widehat{u}'_j}{\partial x_j} \right) - F_k^y \left\{ \frac{\partial v'_i u'_j}{\partial x_j} \right\} - b \frac{\partial P}{\partial x_i} \\ &\quad + F_k^y \left\{ b \frac{\partial}{\partial x_j} \left[\mu \left(\frac{\partial U_i}{\partial x_j} + \frac{\partial U_j}{\partial x_i} \right) \right] - b \frac{2}{3} \frac{\partial}{\partial x_i} \left(\mu \frac{\partial U_j}{\partial x_j} \right) \right\} \end{aligned} \quad (\text{A.3})$$

Following, we multiply equation (A.3) by \widehat{v}_i^* , where \widehat{g}^* is the complex conjugate of \widehat{g} , and sum the equation on i subscript.

$$\begin{aligned} \widehat{v}_i^* \frac{\partial \widehat{v}_i'}{\partial t} &= -\widehat{v}_i^* \widehat{u}_y' \frac{\partial \langle V_i \rangle}{\partial y} - \widehat{v}_i^* \langle U_j \rangle \frac{\partial \widehat{v}_i'}{\partial x_j} - \frac{\widehat{v}_i^*}{2} \left(\langle V_i \rangle \frac{\partial \widehat{u}_j'}{\partial x_j} + \widehat{v}_i' \frac{\partial \langle U_y \rangle}{\partial y} - v_i' \frac{\partial \widehat{u}_j'}{\partial x_j} \right) \\ -\widehat{v}_i^* F_k^y \left\{ \frac{\partial \widehat{v}_i' u_j'}{\partial x_j} \right\} &- \widehat{v}_i^* b \frac{\partial \widehat{P}}{\partial x_i} + \widehat{v}_i^* F_k^y \left\{ b \frac{\partial}{\partial x_j} \left[\mu \left(\frac{\partial U_i}{\partial x_j} + \widehat{v}_i^* \frac{\partial U_j}{\partial x_i} \right) \right] - b \frac{2}{3} \frac{\partial}{\partial x_i} \left(\mu \frac{\partial U_j}{\partial x_j} \right) \right\} \end{aligned} \quad (\text{A.4})$$

Noticing that:

$$\sum_i \Re \left[\widehat{v}_i^* \frac{\partial \widehat{v}_i'}{\partial t} \right] = \sum_i \frac{1}{2} \frac{\partial \widehat{v}_i^* \widehat{v}_i'}{\partial t} = \frac{\partial E_c}{\partial t} \quad (\text{A.5})$$

where $E_c = \frac{1}{2} \widehat{v}_i^* \widehat{v}_i'$ is the instantaneous turbulent kinetic energy (TKE) in the spectral space and \Re is the real part of a complex number, we obtain the spectral equation of the instantaneous turbulent kinetic energy evolution:

$$\begin{aligned} \frac{\partial E_c}{\partial t} &= \Re \left[-\widehat{v}_i^* \widehat{u}_y' \frac{\partial \langle V_i \rangle}{\partial y} - \widehat{v}_i^* F_k^y \left\{ \frac{\partial \widehat{v}_i' u_j'}{\partial x_j} \right\} - \widehat{v}_i^* b \frac{\partial \widehat{P}}{\partial x_i} \right. \\ &\quad - \frac{\widehat{v}_i^*}{2} \left(\langle V_i \rangle \frac{\partial \widehat{u}_j'}{\partial x_j} + \widehat{v}_i' \frac{\partial \langle U_y \rangle}{\partial y} - v_i' \frac{\partial \widehat{u}_j'}{\partial x_j} \right) - \widehat{v}_i^* \langle U_y \rangle \frac{\partial \widehat{v}_i'}{\partial y} \\ &\quad \left. + \widehat{v}_i^* F_k^y \left\{ b \frac{\partial}{\partial x_j} \left[\mu \left(\frac{\partial U_i}{\partial x_j} + \frac{\partial U_j}{\partial x_i} \right) \right] - b \frac{2}{3} \frac{\partial}{\partial x_i} \left(\mu \frac{\partial U_j}{\partial x_j} \right) \right\} \right] \end{aligned} \quad (\text{A.6})$$

Note that $\Re[\widehat{v}_i^* \langle U_x \rangle \frac{\partial \widehat{v}_i'}{\partial x}]$ is equal to zero, because $\widehat{v}_i^* \langle U_x \rangle \frac{\partial \widehat{v}_i'}{\partial x}$ is a pure imaginary number. It remains only $\Re[\widehat{v}_i^* \langle U_y \rangle \frac{\partial \widehat{v}_i'}{\partial y}]$.

The spectral equation (A.6) of the instantaneous TKE evolution depends on the four parameters k_x , k_z , y and t . In order to simplify the interpretation of the terms, we integrate the 2D Fourier space following the wave vector \underline{k} norms:

$$f(k, y) = \int_{k=\|\underline{k}\|} f(k_x, k_z, y) d\underline{k} \quad (\text{A.7})$$

430 References

- [1] X. Daguene-Frick, J.-M. Foucaut, S. Coudert, A. Toutant, G. Olalde, Experimental analysis of the turbulent flow behavior of a textured surface

proposed for asymmetric heat exchangers, *Flow, turbulence and combustion* 89 (1) (2012) 149–169.

- 435 [2] A. Toutant, F. Bataille, Turbulence statistics in a fully developed channel flow submitted to a high temperature gradient, *International Journal of Thermal Sciences* 74 (0) (2013) 104–118.
- [3] P. Chassaing, R. Antonia, F. Anselmet, L. Joly, S. Sarkar, *Variable density fluid turbulence*, Vol. 69, Springer Science & Business Media, 2013.
- 440 [4] J. A. Domaradzki, R. S. Rogallo, Local energy transfer and nonlocal interactions in homogeneous, isotropic turbulence, *Physics of Fluids A: Fluid Dynamics (1989-1993)* 2 (3) (1990) 413–426.
- [5] Y. Zhou, Degrees of locality of energy transfer in the inertial range, *Physics of Fluids A: Fluid Dynamics (1989-1993)* 5 (5) (1993) 1092–1094.
- 445 [6] Y. Zhou, Interacting scales and energy transfer in isotropic turbulence, *Physics of Fluids A: Fluid Dynamics (1989-1993)* 5 (10) (1993) 2511–2524.
- [7] J. A. Domaradzki, W. Liu, C. Hartel, L. Kleiser, Energy transfer in numerically simulated wall-bounded turbulent flows, *Physics of Fluids* 6 (4) (1994) 1583–1599.
- 450 [8] N. Marati, C. Casciola, R. Piva, Energy cascade and spatial fluxes in wall turbulence, *Journal of Fluid Mechanics* 521 (2004) 191–215.
- [9] I. A. Bolotnov, R. T. L. Jr., D. A. Drew, K. E. Jansen, A. A. Oberai, Spectral analysis of turbulence based on the {DNS} of a channel flow, *Computers and Fluids* 39 (4) (2010) 640 – 655.
- 455 [10] A. Cimarelli, E. De Angelis, The physics of energy transfer toward improved subgrid-scale models, *Physics of Fluids (1994-present)* 26 (5) (2014) 055103.
- [11] A. Cimarelli, E. De Angelis, C. Casciola, Paths of energy in turbulent channel flows, *Journal of Fluid Mechanics* 715 (2013) 436–451.

- [12] A. Favre, Statistical equations of turbulent gases, Problems of hydrodynamics and continuum mechanics (1969) 231–266.
460
- [13] D. C. Wilcox, et al., Turbulence modeling for CFD, Vol. 2, DCW industries La Canada, CA, 1998.
- [14] P. Huang, G. Coleman, P. Bradshaw, Compressible turbulent channel flows: Dns results and modelling, Journal of Fluid Mechanics 305 (1995) 185–218.
- [15] P. Chassaing, Une alternative à la formulation des équations du mouvement turbulent d’un fluide à masse volumique variable, Journal de mécanique théorique et appliquée 4 (3) (1985) 375–389.
465
- [16] F. Aulery, A. Toutant, F. Bataille, Y. Zhou, Energy transfer process of anisothermal wall-bounded flows, Physics Letters A 379 (24) (2015) 1520–1526.
470
- [17] C.-S. Yih, Exact solutions for steady two-dimensional flow of a stratified fluid, Journal of Fluid Mechanics 9 (02) (1960) 161–174.
- [18] S. Kida, S. Orszag, Energy and spectral dynamics in decaying compressible turbulence, Journal of Scientific Computing 7 (1) (1992) 1–34.
- [19] J. Rodriguez Azara, G. Emanuel, Compressible rotational flows generated by the substitution principle, Physics of Fluids 31 (1988) 1058–1063.
475
- [20] A. W. Cook, Y. Zhou, Energy transfer in rayleigh-taylor instability, Phys. Rev. E 66 (2002) 026312.
- [21] A. Kolmogorov, Cr acad. sci., ussr 30 301 kolmogorov an 1941, CR Acad. Sci., USSR 30 (1941) 538.
480
- [22] S. Serra, A. Toutant, F. Bataille, Y. Zhou, Turbulent kinetic energy spectrum in very anisothermal flows, Physics Letters A 376 (45) (2012) 3177–3184.

- [23] Y. Zhou, W. Matthaeus, P. Dmitruk, Colloquium: Magnetohydrodynamic
485 turbulence and time scales in astrophysical and space plasmas, *Reviews of
Modern Physics* 76 (4) (2004) 1015.
- [24] Y. Zhou, Renormalization group theory for fluid and plasma turbulence,
Physics Reports 488 (1) (2010) 1–49.
- [25] Y. Zhou, S. Oughton, Nonlocality and the critical reynolds numbers of
490 the minimum state magnetohydrodynamic turbulence, *Physics of Plasmas*
(1994-present) 18 (7) (2011) 072304.
- [26] S. Paolucci, On the filtering of sound from the Navier-Stokes equations,
Tech. Rep. SAND82-8257, Sandia National Labs., Livermore, CA (USA)
(1982).
- 495 [27] R. Courant, K. Friedrichs, H. Lewy, Über die partiellen Differenzengle-
ichungen der mathematischen Physik, *Mathematische Annalen* 100 (1)
(1928) 32–74.
- [28] E. Garnier, N. Adams, P. Sagaut, Large eddy simulation for compressible
flows, Springer Science & Business Media, 2009.
- 500 [29] F. Nicoud, F. Ducros, Subgrid-scale stress modelling based on the square
of the velocity gradient tensor, *Flow, Turbulence and Combustion* 62 (3)
(1999) 183–200.
- [30] T. M. Eidson, Numerical simulation of the turbulent Rayleigh–Bénard
problem using subgrid modelling, *Journal of Fluid Mechanics* 158 (1985)
505 245–268.
- [31] W. Sutherland, LII. the viscosity of gases and molecular force, The Lon-
don, Edinburgh, and Dublin Philosophical Magazine and Journal of Science
36 (223) (1893) 507–531.
- [32] B. Leonard, A stable and accurate convective modelling procedure based
510 on quadratic upstream interpolation, *Computer Methods in Applied Me-
chanics and Engineering* 19 (1) (1979) 59–98.

- [33] C. Calvin, O. Cueto, P. Emonot, An object-oriented approach to the design of fluid mechanics software, *ESAIM: Mathematical Modelling and Numerical Analysis* 36 (05) (2002) 907–921.
- 515 [34] M. Frigo, S. G. Johnson, FFTW: An adaptive software architecture for the FFT, in: *Acoustics, Speech and Signal Processing, 1998. Proceedings of the 1998 IEEE International Conference on*, Vol. 3, IEEE, 1998, pp. 1381–1384.
- [35] J. Kim, P. Moin, R. Moser, Turbulence statistics in fully developed channel flow at low reynolds number, *Journal of Fluid Mechanics* 177 (1987) 133–
520 166.
- [36] R. D. Moser, J. Kim, N. N. Mansour, Direct numerical simulation of turbulent channel flow up to $re_\tau = 590$, *Physics of Fluids* 11 (4) (1999) 943–945.
- [37] U. Piomelli, Y. Yu, R. J. Adrian, Subgrid-scale energy transfer and near-wall turbulence structure, *Physics of Fluids* 8 (1) (1996) 215–224.
- 525 [38] A.-T. Le, G. N. Coleman, J. Kim, Near-wall turbulence structures in three-dimensional boundary layers, *International Journal of Heat and Fluid Flow* 21 (5) (2000) 480 – 488.
- [39] A. Cimarelli, E. D. Angelis, Anisotropic dynamics and sub-grid energy transfer in wall-turbulence, *Physics of Fluids* 24 (1) (2012) 015102.
- 530 [40] P. Chassaing, *Turbulence en mécanique des fluides*, Cépaduès-éditions, 2000.