



HAL
open science

Developing and adult reef fish show rapid light-induced plasticity in their visual system

Lily G Fogg, Fabio Cortesi, Camille Gache, David Lecchini, N. Justin Marshall, Fanny de Busserolles

► **To cite this version:**

Lily G Fogg, Fabio Cortesi, Camille Gache, David Lecchini, N. Justin Marshall, et al.. Developing and adult reef fish show rapid light-induced plasticity in their visual system. *Molecular Ecology*, 2023, 32 (1), pp.167-181. 10.1111/mec.16744 . hal-04005861

HAL Id: hal-04005861

<https://univ-perp.hal.science/hal-04005861v1>

Submitted on 27 Feb 2023







HAL is a multi-disciplinary open access archive for the deposit and dissemination of scientific research documents, whether they are published or not. The documents may come from teaching and research institutions in France or abroad, or from public or private research centers.

L'archive ouverte pluridisciplinaire **HAL**, est destinée au dépôt et à la diffusion de documents scientifiques de niveau recherche, publiés ou non, émanant des établissements d'enseignement et de recherche français ou étrangers, des laboratoires publics ou privés.



Distributed under a Creative Commons Attribution - NonCommercial 4.0 International License

Developing and adult reef fish show rapid light-induced plasticity in their visual system

Lily G. Fogg¹  | Fabio Cortesi¹  | Camille Gache^{2,3}  | David Lecchini^{2,3}  |
N. Justin Marshall¹  | Fanny de Busserolles¹ 

¹Queensland Brain Institute, The University of Queensland, Brisbane, Queensland, Australia

²PSL Research University, EPHE-UPVD-CNRS, UAR3278 CRIOBE, Papetoai, French Polynesia

³Laboratoire d'Excellence "CORAIL", Paris, France

Correspondence

Lily G. Fogg, Queensland Brain Institute, The University of Queensland, Brisbane, QLD 4072, Australia.
Email: lily.fogg@uqconnect.edu.au

Funding information

Australian Research Council, Grant/Award Number: DE180100949

Handling Editor: Michael M. Hansen

Abstract

The visual capabilities of fish are optimized for their ecology and light environment over evolutionary time. Similarly, fish vision can adapt to regular changes in light conditions within their lifetime, e.g., ontogenetic or seasonal variation. However, we do not fully understand how vision responds to irregular short-term changes in the light environment, e.g., algal blooms and light pollution. In this study, we investigated the effect of short-term exposure to unnatural light conditions on opsin gene expression and retinal cell densities in juvenile and adult diurnal reef fish (convict surgeonfish; *Acanthurus triostegus*). Results revealed phenotypic plasticity in the retina across ontogeny, particularly during development. The most substantial differences at both molecular and cellular levels were found under constant dim light, while constant bright light and simulated artificial light at night had a lesser effect. Under dim light, juveniles and adults increased absolute expression of the cone opsin genes, *sws2a*, *rh2c* and *lws*, within a few days and juveniles also decreased densities of cones, inner nuclear layer cells and ganglion cells. These changes potentially enhanced vision under the altered light conditions. Thus, our study suggests that plasticity mainly comes into play when conditions are extremely different to the species' natural light environment, i.e., a diurnal fish in "constant night". Finally, in a rescue experiment on adults, shifts in opsin expression were reverted within 24 h. Overall, our study showed rapid, reversible light-induced changes in the retina of *A. triostegus*, demonstrating phenotypic plasticity in the visual system of a reef fish throughout life.

KEYWORDS

light environment, ontogeny, phenotypic plasticity, retina, teleost fish, vision

1 | INTRODUCTION

Teleost fishes inhabit diverse environments, ranging from coral reefs to the deep sea, and their visual systems have adapted accordingly (Cortesi et al., 2020; de Busserolles et al., 2020; Lythgoe, 1979; Walls, 1942). Some of their best characterized visual adaptations are

in the retina. The retina comprises the photoreceptor layer, the inner nuclear layer (INL) and the ganglion cell (GC) layer (Lamb, 2013). Within the photoreceptor layer, rods facilitate scotopic (dim light) vision while cones facilitate photopic (bright light) vision. Within the rods and cones, there are opsin proteins sensitive to different wavelengths of light which affect the spectral sensitivity of the visual

This is an open access article under the terms of the [Creative Commons Attribution-NonCommercial](https://creativecommons.org/licenses/by-nc/4.0/) License, which permits use, distribution and reproduction in any medium, provided the original work is properly cited and is not used for commercial purposes.

© 2022 The Authors. *Molecular Ecology* published by John Wiley & Sons Ltd.

system (Musilova et al., 2021). Rods contain the rhodopsin protein, RH1 (rhodopsin), while cones contain several opsins: SWS1 (short wavelength-sensitive 1, ultraviolet), SWS2 (violet-blue), RH2 (medium wavelength-sensitive 2, blue-green) and LWS (long wavelength-sensitive, yellow-red) (Bowmaker, 2008). There are also single cones and double cones (i.e., two fused single cones), which in teleosts express RH2 and LWS opsins or SWS opsins, respectively (Musilova et al., 2021). Activation of the opsins generates visual signals which are conveyed from the photoreceptors to the INL, the primary layer for opponent processing (i.e., an integrative comparison of signals from different visual channels) (Baden & Osorio, 2019). Finally, the signals are summated in the GC layer, where a trade-off between luminous sensitivity and visual acuity occurs. Generally, lower GC densities enhance sensitivity by increasing the summation of visual signals, while higher GC densities improve acuity by increasing the resolution at which signals are sampled (Collin, 1997; Warrant, 1999).

Changes within the retina can reflect visual adaptations to specific environments. These adaptations may occur at the cellular level, involving the size, number and distribution of retinal cell types (Collin & Shand, 2003; Yoshimatsu et al., 2020), or molecular level, concerning the opsins or other parts of the phototransduction machinery (Carleton et al., 2020). Some of these visual adaptations have emerged over evolutionary timescales. In marine fishes, this is exemplified by differences in spectral sensitivity between species inhabiting various depths (e.g., shallow vs. deep; Douglas et al., 2003; Douglas & Partridge, 1997; Schweikert, Caves, et al., 2018; Schweikert, Fitak, et al., 2018), or habitat types (e.g., coastal vs. pelagic; Lythgoe et al., 1994; Marshall et al., 2015). However, vision may also be plastic within the lifetime of an individual, such as during its development (Evans & Fernald, 1993; Pankhurst, 1987; Shand, 1997; Shand et al., 2000; Siebeck & Marshall, 2007) and between seasons (Shimmura et al., 2017; Stieb et al., 2016). For example, a shift to a nocturnal lifestyle during ontogeny has been correlated with scotopic remodelling of the retina in reef fishes (Fogg et al., 2022b; Shand, 1997). These ontogenetic and seasonal variations are regular, predictable alterations to the light environment that a species will have encountered over many preceding generations, potentially allowing genetic signals to contribute to adaptation, such as has been found in killifish (Fuller et al., 2005) and damselfish (Stieb et al., 2016). However, less is known about the ability of fishes to adapt to more irregular and unpredictable changes in the light environment.

The light environment can change unpredictably due to both natural causes (e.g., weather patterns), and anthropogenic causes (e.g., light pollution [Davies et al., 2014]). Therefore, it might be expected that the visual system harbours some degree of phenotypic plasticity to maintain optimal visual performance under these irregular conditions. Indeed, plasticity in opsin gene expression has been observed in several teleost species placed under unpredictably altered light conditions, such as damselfish and cardinalfish (Luehrmann et al., 2018), cichlids (Dalton et al., 2015; Härer et al., 2017; Irazábal-González et al., 2021; Wright et al., 2020), guppies (Kranz et al., 2018) and Senegalese sole (Frau et al., 2020). In a handful of species, opsin gene expression plasticity was even observed across several life stages (killifish: Fuller & Claricoates, 2011; Fuller et al., 2010; African cichlids:

Nandamuri, Yourick, & Carleton, 2017). Plasticity in retinal morphology has also been observed, for example, in Neotropical cichlids (Karagic et al., 2018; Wagner & Kröger, 2005). In most cases, the plastic responses observed in fishes seem adaptive, with changes to opsin gene expression and retinal morphology probably maximizing visual capabilities in the novel light conditions. However, considerable interspecific variation in the responses to similar environmental cues suggests that, although environment drives the plastic response, phylogeny may also exert an effect. Likewise, little is known about intraspecific differences in visual plasticity, for example, at different life stages. As such, there are major gaps in our understanding of phenotypic plasticity in the visual system, particularly in reef fishes, whose environment continues to change unpredictably due to anthropogenic causes, such as algal blooms and light pollution (reviewed in Marshall et al., 2019).

To fill this knowledge gap, we investigated the capacity of the visual system to adapt to stochastic changes in light conditions in both juvenile and adult stages of a coral reef fish, *Acanthurus triostegus* (convict surgeonfish). This species is widely distributed (Froese & Pauly, 2022) and, unlike for many marine fishes, earlier life stages can be easily and consistently obtained from the wild (Besson et al., 2017). Importantly, the ecology and visual system of this species has been well-characterized. *A. triostegus* is a diurnal species which consumes zooplankton in the upper layers of the open ocean as larvae but rapidly switches to an algal diet on the reef after it metamorphoses into a juvenile (Abitia et al., 2011; Frédéricich et al., 2012). This surgeonfish has a well-developed colour vision system to match its diurnal lifestyle, with one rod opsin (*rh1*) and five cone opsins (*sws2a*, *sws2b*, *rh2a*, *rh2c* and *lws*) expressed in settlement larvae (i.e., larvae that have just transitioned to the reef), juveniles and adults (Cortesi et al., 2015, 2018) and high cone densities in settlement larvae and juveniles (Besson, 2017).

Here, we exposed juvenile and adult *A. triostegus* to changed light conditions, that is, constant dim light, constant bright light or simulated artificial light at night. A subset of adults was also used for a rescue experiment involving return to a normal light environment after exposure to constant dim light. Following light treatment, the opsin gene expression repertoire in juveniles and adults was confirmed using transcriptomics, and opsin gene expression was measured using quantitative PCR. Retinal cell densities were also assessed histologically in juveniles. Using this approach, we aimed to contribute to the following unresolved questions relating to the phenotypic plasticity of vision in fishes: (1) Do reef fish show phenotypic plasticity in the visual system throughout life? (2) Does plasticity occur at both molecular and cellular levels? (3) How rapidly does a plastic response occur?

2 | MATERIALS AND METHODS

2.1 | Animal collection and care

Details of all animals used in this study are given in Table S1. All individuals were convict surgeonfish, *Acanthurus triostegus* (Linnaeus, 1758) (Figure 1). Settlement-stage larvae, larvae that have just

transitioned to the reef and do not show the characteristic black barring yet, were collected at night using hand nets and a crest net positioned on the reef crest of the lagoon at Temae, Moorea, French Polynesia (17°29'S, 149°45'W) in March 2019 (Besson et al., 2020; Lecchini et al., 2004). Adults were collected with clove oil (15% solution) and hand nets on the Great Barrier Reef around Lizard Island, Australia (14°40'S, 145°27'E) in July 2021. Immediately following collection, fish were transferred to aquariums at the corresponding research station (Centre for Island Research and Environmental Observatory [CRIOBE] on Moorea, and Lizard Island Research Station [LIRS] on Lizard Island). Animal collection, care and euthanasia followed procedures approved by the University of Queensland Animal Ethics Committee (QBI 304/16). All collections in Australia were conducted under a Great Barrier Reef Marine Park Permit (G17/38160.1) and Queensland General Fisheries Permit (180731) and those in French Polynesia were conducted in accordance with French regulations.

2.2 | Light treatment

On the morning following collection, individuals at each life stage were euthanised on day zero (D0) as baseline controls and all other fish were transferred into aquaria for light treatments. It is

important to note that settlement larvae of *A. triostegus* progress to the juvenile stage after transitioning to the reef within 48 h or less (Besson, 2017). Thus, although all developing individuals were captured as settlement larvae during the night, by the time these fish were introduced to aquaria the following morning, they had progressed to the juvenile stage as identified by the black barring and are referred to as juveniles throughout this study. Juveniles were exposed to five light treatments (Figure 1). (1) 12L12D outdoor: an outdoor control tank which received 12 h of natural bright light (i.e., sunlight; from approximately 6 AM to 6 PM) and 12 h of natural dim light (i.e., moonlight) and was not subject to artificial light, (2) 12L12D indoor: an indoor control tank exposed to 12 h of bright light (i.e., artificial light at sunlight intensity; 50,000 lux; exposure from 6:00 AM to 6:00 PM) and 12 h of dim light (i.e., artificial light at moonlight intensity; 2 lux), (3) 12L12AL: 12 h of bright light and 12 h of artificial light at streetlight intensity (50 lux) to simulate night-time light pollution, (4) 24L: 24 h of bright light, or (5) 24D: 24 h of dim light. Juveniles were euthanised on day three (D3) or six (D6) of exposure (gene expression: $n = 5-6$, $N = 63$; histology: $n = 4$, $N = 44$; numbers include baseline controls; one eye per individual for each analysis). Preliminary analyses suggested that juveniles only showed consistent significant changes at both molecular and cellular levels under 24D. Therefore, in addition to baseline controls, adults were exposed to three light treatments, two similar to the juveniles with

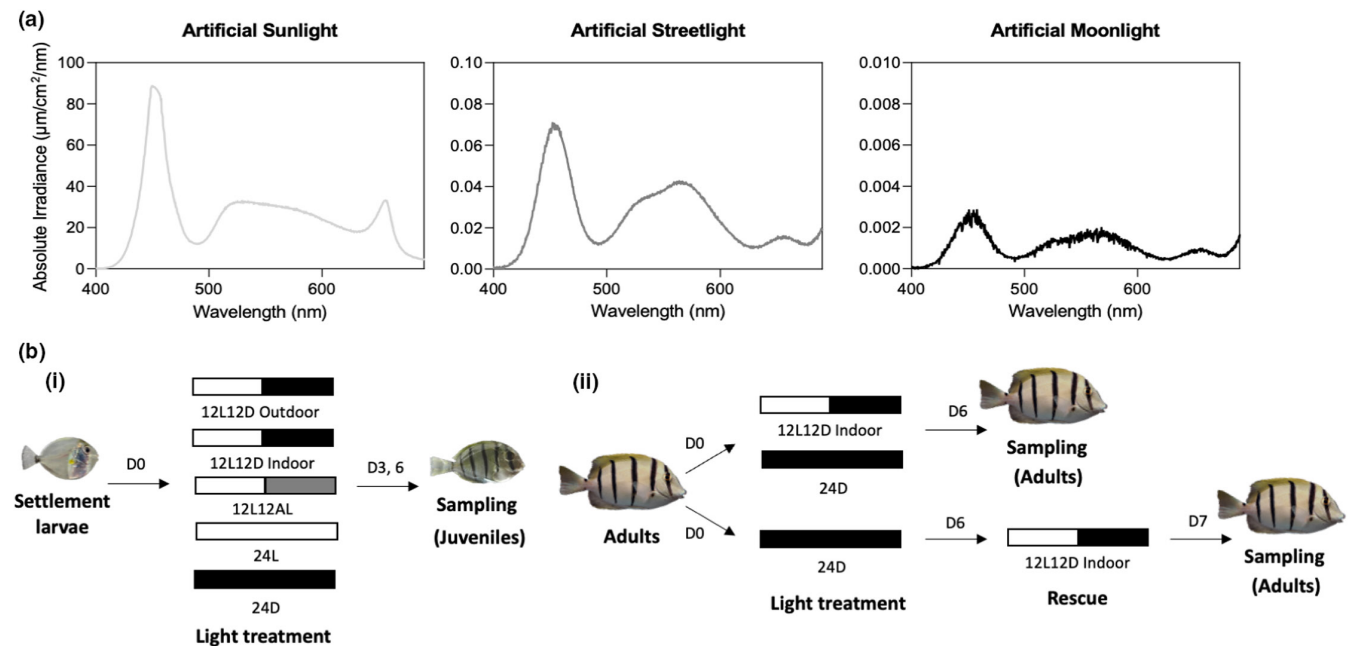


FIGURE 1 Light treatments. (a) Absolute irradiance ($\mu\text{m}/\text{cm}^2/\text{nm}$) of downwelling light at different wavelengths (nm) for the treatments used in this study. Conditions included artificial light at sunlight, streetlight and moonlight intensity equating to approximately 50,000 lux, 50 lux and 2 lux, respectively. (b) Experimental design for (i) juveniles (note that these fish were captured as settlement larvae but were juveniles at the time of sampling) and (ii) adults. Juveniles were exposed to five light treatments and then sampled at days (D) 3 and 6. 12L12D outdoor represents exposure to 12 h of natural bright light (i.e., sunlight) and 12 h of natural dim light (i.e., moonlight). 12L12D indoor was 12 h each of artificial bright light (i.e., artificial sunlight) and artificial dim light (i.e., artificial moonlight). 12L12AL was 12 h of artificial bright light and 12 h of artificial 'streetlight'. 24L was 24 h of artificial bright light. 24D was 24 h of artificial dim light. Adults were exposed to three light treatments, two similar to the juveniles with sampling at D6, plus a rescue treatment. The rescue involved exposure to 24 h of artificial moonlight for six days followed by 24 h in the indoor control treatment (i.e., 12L12D indoor). Note that D0 baseline controls were also sampled for both stages. L, light (sunlight intensity); D, dark (moonlight intensity); AL, artificial lamplight (streetlight intensity).

sampling at D6, plus a rescue treatment (Figure 1). Adult light treatments were: (1) 12L12D indoor control for six days, (2) 24D for six days or (3) a rescue treatment in which fish were exposed to 24D for six days and were then returned to 12L12D indoor for 24 h (gene expression: $n = 4-5$; $N = 19$; numbers include baseline controls). All animals were euthanised at 7:30–9:00am to avoid circadian effects on opsin gene expression (Yourick et al., 2019).

Adults were fed twice daily; however, juveniles were not fed, as this species probably does not feed during the post-settlement remodelling phase (McCormick et al., 2002; Randall, 1961). Fish were housed in glass tanks coated in black tarp filled with 27–29°C seawater. All artificial light treatments used broad spectrum LEDs (VIPAR spectra, model V165) covered with a diffusion filter (LEE Filters; www.leafilters.com). Different light intensities were achieved by varying lamp brightness settings and adding neutral density filters (0.3 ND, 0.6 ND and 0.9 ND; LEE Filters). The absolute irradiance of downwelling light in the tanks were measured using a 1000 μm optic fibre connected to a Jaz spectrometer and SpectraSuite software (Ocean Optics) (Figure 1).

2.3 | Mortality, growth and sample preservation

Fish mortality was recorded upon twice-daily inspection of the aquaria. Following euthanasia at the end of the experiment, all individuals were photographed with a ruler and their standard length (SL) and body height (BH; defined as in Besson, 2017) were measured from the images using Fiji version 1.53c (Schindelin et al., 2012). Since altered light conditions can impact morphological growth (Karagic et al., 2018), growth changes were also assessed using body depth (i.e., BH divided by SL) as it is a good indicator of developmental progress in this species (Besson, 2017; McCormick, 1999). Following photography, eyes were immediately enucleated, the cornea and lens removed, and the eye cup preserved in either RNAlater (Sigma-Aldrich) or 4% paraformaldehyde (PFA; 4% [w/v] PFA in 0.01 M phosphate-buffered saline [PBS], pH 7.4) depending on the analysis (see below for details).

2.4 | Transcriptomic assessment of the opsin gene expression repertoire

One transcriptome per time point per condition was sequenced for juveniles ($N = 11$; accession numbers provided in Table S2) to verify species identity, confirm the opsin gene expression repertoire, and extract housekeeping gene sequences. Since these transcriptomes were solely used to establish and validate the methodology and no attempt to draw conclusions about differential gene expression was made, a single individual from each condition was sufficient. Firstly, retinal tissue preserved in RNAlater was digested using Proteinase K (New England Biolabs), total RNA was isolated using the Monarch Total RNA Miniprep Kit (NEB) and genomic DNA was removed using RNase-free DNase (NEB). Quality and yield of RNA was assessed

using the eukaryotic total RNA 6000 Nano kit on the Queensland Brain Institute's Bioanalyser 2100 (Agilent technologies). RNA extractions were shipped on dry ice and retinal transcriptome libraries were prepared from total RNA using the NEBNext Ultra RNA library preparation kit for Illumina (NEB) at Novogene's (<https://en.novogene.com/>) sequencing facilities in Hong Kong and Singapore. The concentration of each library was checked using a Qubit dsDNA BR Assay kit (ThermoFisher) prior to barcoding and pooling at equimolar ratios. Libraries were sequenced as 150 bp paired-end reads on a HiSeq 2500 using Illumina's SBS chemistry version 4.

Libraries were trimmed and de novo assembled as described in de Busserolles et al. (2017). Briefly, read quality was assessed using FastQC (version 0.72), raw reads were trimmed and filtered using Trimmomatic (version 0.36.6) and transcriptomes were de novo assembled with Trinity (version 2.8.4) using the genomics virtual laboratory on the Galaxy platform (usegalaxy.org; [Afgan et al., 2018]). Species-specific cytochrome C oxidase subunit I (COI) were downloaded from GenBank (<https://www.ncbi.nlm.nih.gov/genbank/>). Opsin gene coding sequences (CDS) for *A. triostegus* were provided by Fabio Cortesi et al. (2015, 2018) and their identity was confirmed by BLASTn (NCBI, Bethesda, MD, <https://blast.ncbi.nlm.nih.gov/Blast.cgi>) and comparison to the published sequences of a close relative, the spotted unicornfish, *Naso brevirostris* (Tettamanti et al., 2019). All gene extractions and expression analyses were conducted in Geneious Prime version 2021.1.1 (Biomatters Ltd).

The species of origin of each retinal transcriptome was confirmed by mapping trinity assembled transcripts back onto the *A. triostegus* COI CDS. Next, the opsin gene expression repertoire was assessed. Opsin gene paralogues were scored on similarity using pairwise/multiple alignments. The similarity score minus one was used as the gene-specific maximum % mismatch threshold for mapping (paired) transcripts back onto the opsin CDS to ensure that reads did not map to multiple paralogues. Proportional expression of each cone opsin gene was estimated by dividing the number of reads mapped to a specific opsin gene by the total number of reads mapped to all cone opsin genes. Cone opsin genes with expression levels estimated to be at least 1% of total cone opsin gene expression, as well as the highly expressed *rh1* gene, were carried forward for quantitative PCR.

Finally, two housekeeping gene CDSs, *Beta-actin* (*actb*) and *elongation factor 1 alpha* (*elf1a*), were manually extracted from the transcriptome for use in normalizing opsin gene expression in quantitative PCR (Yourick et al., 2019). Housekeeping gene extractions were performed by mapping filtered paired reads to published CDSs of *Oryzias latipes* (*actb*; S74868) or *Amphiprion ocellaris* (*elf1a*; XM_023263215) with medium sensitivity settings. Matching reads were connected by following single nucleotide polymorphisms (SNPs) across genes with continual visual inspection for ambiguity and were extracted as paired mates to mitigate sequence gaps. The consensus of an assembly of these extracted reads was used as the reference for low sensitivity (high accuracy, 100% identity threshold) mapping. Partial CDS extractions were cyclically mapped using the low sensitivity approach to prolong and subsequently remap reads until a complete CDS was obtained

(accession numbers provided in Table S2). To confirm the identity of each gene, full coding sequences were checked using BLASTn.

2.5 | Real-time quantitative reverse transcription polymerase chain reaction (real-time qRT-PCR)

Real-time qRT-PCR was conducted as described by Luehrmann et al. (2018) (also see Stieb et al., 2016 and Yourick et al., 2019). Briefly, total retinal RNA was reverse transcribed into cDNA using the High-Capacity RNA-to-cDNA kit (Applied Biosystems) and visualized using SYBR Green (master [Rox] dye; Roche) on a StepOnePlus Real-Time PCR System (Applied Biosystems). To confirm that the expression of the housekeeping (HK) genes was stable across light treatments, the critical cycle threshold was used to compare variation in raw expression between conditions. Subsequently, opsin gene expression relative to two housekeeping (2HK) genes was calculated using the formula below, where f_{gene} , 2HK is opsin gene expression normalized to 2HK gene expression, E_{house} and E_{gene} are the gene-specific primer efficiencies for HK and opsin genes, respectively, and Ct_{house} and Ct_{gene} are the critical cycle thresholds for the HK and opsin genes, respectively.

$$f_{\text{gene,2HK}} = \frac{\left(\sum (1 + E_{\text{house}})^{Ct_{\text{house}}} / 2 \right)}{(1 + E_{\text{gene}})^{Ct_{\text{gene}}}}$$

Opsin gene expression was also calculated without normalization to housekeeping genes and instead as proportional expression to minimize the potential effect of a circadian shift (Yourick et al., 2019). Opsin gene expression was calculated both as a proportion (%) of total opsin gene expression and as a proportion (%) of single or double cone opsin gene expression. Opsin gene expression as a proportion of total opsin gene expression was calculated as the expression of each opsin gene divided by the sum of the expression of all opsin genes. Opsin gene expression as a proportion of single and double cone opsin gene expression was calculated as the expression of each single (*sws2a* and *sws2b*) and double (*rh2a*, *rh2b* and *lws*) cone opsin gene divided by the sum of the expression of all single or double cone opsin genes, respectively (Luehrmann et al., 2018; Stieb et al., 2016).

Unique species-specific primers were designed from the opsin and housekeeping gene CDS. Primers produced short (85–100 bp) or long (500–700 bp) amplicons for each gene for quantitative PCR and primer efficiency testing, respectively. To exclusively amplify cDNA, the forward or reverse primer spanned an exon-exon boundary (except for the intronless *rh1*). Primer efficiencies were tested using a three orders of magnitude dilution series of a species-specific opsin pool. To generate the opsin pool, each gene was amplified from cDNA, purified from an agarose gel using the QIAquick PCR purification kit (Qiagen), quantified with the Agilent 2100 Bioanalyser High Sensitivity DNA kit and mixed in equimolar ratios. All primer details are provided in Table S3. All experiments had three technical replicates with random assignment of samples to each qPCR plate.

2.6 | Retinal histology

Retinal histology was conducted on PFA-fixed eyes from juveniles. To account for intraretinal variability (de Busserolles et al., 2021), a small piece of tissue was dissected from two different (dorsal and ventral) retinal regions. Tissue was post-fixed in 2.5% glutaraldehyde and 2% osmium tetroxide, dehydrated in ethanol and acetone, and embedded in EPON resin (ProSciTech) using a BioWave Pro tissue processor (PELCO). Radial 1 μm -thick sections were cut on a Leica ultramicrotome (UltraCut UC6) and stained with 0.5% toluidine blue and 0.5% borax. Brightfield images were captured under a 63 \times objective (oil, 1.4 numerical aperture, 0.19 mm working distance, 0.102 $\mu\text{m}/\text{pixel}$) on a Zeiss Axio upright microscope (Imager Z1).

Since continuous exposure to high-intensity light can cause retinal degeneration (Bernardos et al., 2007; Vera & Migaud, 2009), retinas of fish exposed to 24L were inspected for signs of degeneration prior to analysis. Subsequently, retinal cell densities were estimated from transverse retinal sections as described previously (Fogg et al., 2022b; Shand, 1997). Briefly, in Fiji, retinal images were cropped to obtain 100 μm -wide strips, the number of cone outer segments (OS), outer nuclear layer (ONL) nuclei, inner nuclear layer (INL) nuclei and ganglion cell (GC) layer nuclei were counted for three sections per sample using the cell counter plugin and the density of each cell type per 0.01 mm^2 of retina was calculated. Rod densities were calculated as the difference between ONL nuclei and cone OS densities (Shand, 1994a).

2.7 | Statistical analysis

Statistical analyses were conducted using the GraphPad Prism software version 8.3.1 (www.graphpad.com). Since normality tests have very little power to detect the distribution (i.e., Gaussian or non-Gaussian) of data sets with small sample sizes (Ghasemi & Zahediasl, 2012), a more conservative approach to statistical analysis was employed. Specifically, all data sets were assumed to have non-Gaussian distributions and thus, all tests were nonparametric. For comparisons of two groups, data were analysed with two-tailed Mann Whitney tests. For comparisons of more than two groups, data were analysed with a Kruskal-Wallis test and a Dunn's multiple comparisons test. Statistical significance was considered as $p < .05$. Graphs throughout the study were generated using GraphPad Prism.

3 | RESULTS

3.1 | Opsin gene expression plasticity in juveniles

Opsin gene expression was quantified in juvenile *A. triostegus* after light treatment (Figure 2). For absolute opsin gene expression analyses, the expression of the two housekeeping genes used for normalization was first confirmed to be stable across conditions (Figure S1). Next, these housekeeping genes were used to

normalize the expression of the opsin genes present in the juvenile retina: the rod opsin, *rh1*, and five cone opsin genes, *sws2a*, *sws2b*, *rh2a*, *rh2c* and *lws*. All of these opsin genes were expressed under each light treatment and no additional opsin genes were expressed in any treatment.

Under natural light conditions (12L12D outdoor), juveniles showed an initial drop in absolute expression (i.e., expression normalized to housekeeping genes) and proportional expression (i.e., expression as a proportion of total opsin gene expression) of *sws2a*, *sws2b* and *lws* at D3 (absolute: *sws2b*, $p < .01$; *sws2a* and *lws*, $p < .05$, proportional: *sws2a*, $p < .01$; *sws2b* and *lws*, $p < .05$) (Figures S2 and S3). However, none of the opsin genes showed a net change in expression between D0 and D6. Notably, expression differed between the two controls (i.e., 12L12D outdoor vs. indoor) at D6, with expression higher in the outdoor control for some of the cone opsin genes (*rh2a*, $p < .001$; *lws*, $p < .05$) (Figure 2). Thus, the artificial light treatments were statistically compared to the age-matched indoor control which used the same light source.

Under all artificial light treatments, changes to absolute opsin gene expression were limited to the cone opsin genes, with no changes to *rh1* expression (Figure 2). The most consistent changes occurred under 24D, in which the dominantly expressed cone opsin genes showed increased expression (D6: *sws2a*, $p < .05$; *rh2a*, $p < .01$; *rh2c*, $p < .001$; *lws*, $p < .01$). This trend was observed at both D3 and D6. Additionally, a second pattern was observed in a smaller subset of the cone opsin genes in response to brighter artificial light conditions. Specifically, *sws2a* and *lws* showed increased expression levels under 24L (D6: *sws2a*, $p < .001$; *lws*, $p < .0001$), while *rh2a* showed a trend towards increased expression. Finally, 12L12AL had a lesser

effect on absolute opsin gene expression than the other treatments, resulting in an increase in *sws2a* expression and a decrease in *sws2b* expression (D6: *sws2a*, $p < .05$; *sws2b*, $p < .01$).

Proportional opsin gene expression analyses revealed similar results to the absolute expression data (Figure 3). As such, under 24D, juveniles showed increased proportional expression of *rh2a* (D6: $p < .01$), and a trend towards increased expression of *sws2a* and *lws*. Similarly, under 24L, juveniles increased proportional expression of *sws2a*, *rh2a* and *lws* (D6: *sws2a*, $p < .01$; *rh2a*, $p < .01$; *lws*, $p < .001$). However, in contrast to the absolute expression results, *rh1* showed a decrease in proportional expression under both 24D and 24L (D6: 24D, $p < .05$; 24L, $p < .01$). Finally, only the 24L and 12L12AL conditions resulted in shifts in the balance of proportional opsin gene expression within the single and double cone populations, while these changed very little under 24D (Figure S4). Under 24L, single cone expression shifted to higher relative levels of *sws2a* and lower levels of *sws2b* (D6: *sws2a*, $p < .05$; *sws2b*, $p < .05$), while double cone opsin expression shifted towards higher relative levels of *lws* and lower levels of *rh2a* and *rh2c* (D6: *rh2a*, $p < .05$; *rh2c*, $p < .01$; *lws*, $p < .05$). Similarly, single cone opsin expression also shifted to higher relative levels of *sws2a* and lower levels of *sws2b* under 12L12AL (*sws2a*, $p < .05$; *sws2b*, $p < .05$), but with no significant effect on double cone proportional expression observed.

3.2 | Opsin gene expression plasticity in adults

Opsin gene expression was also quantified in adult *A. triostegus* after light treatment (Figures 4 and 5). For the adult experiment, the

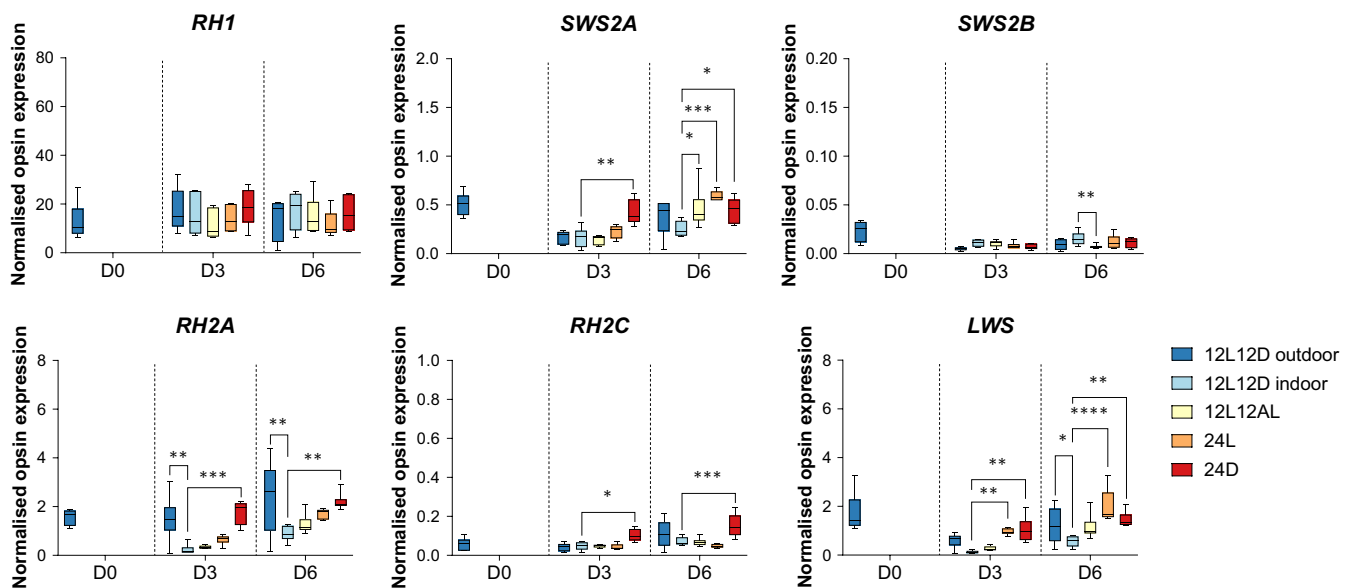


FIGURE 2 Absolute opsin gene expression in developing fishes under altered light conditions. Opsin gene expression in juvenile *A. triostegus* normalized to two housekeeping genes. Time points were taken at days (D) 0, 3 and 6 of exposure to altered light treatments ($n = 5-6$; $N = 63$). Data are given as Tukey boxplots. Statistical significance compared to the age-matched 12L12D indoor control (calculated from a Kruskal-Wallis test with Dunn's multiple comparisons test): * $p < .05$; ** $p < .01$; *** $p < .001$; **** $p < .0001$. *rh1*, rhodopsin-like middle-wavelength sensitive 1 (rod opsin); *rh2*, rhodopsin-like middle-wavelength sensitive 2; *sws2*, short-wavelength-sensitive 2; *lws*, long-wavelength-sensitive.

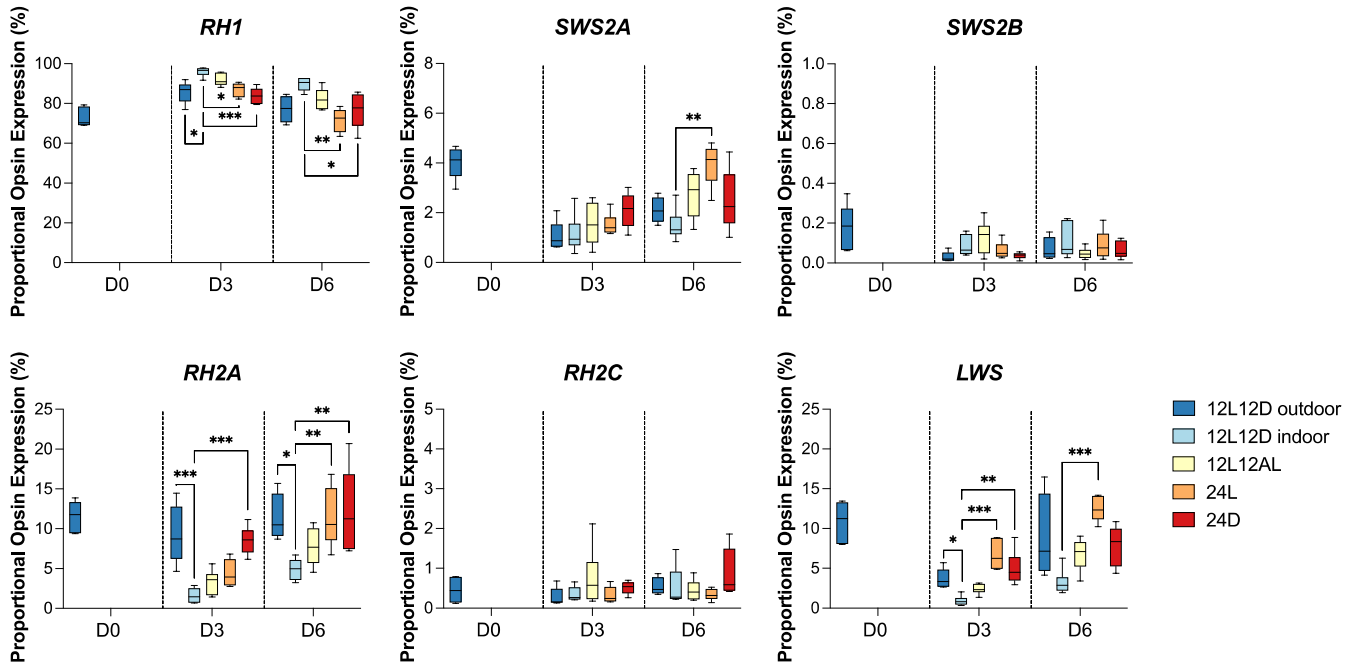


FIGURE 3 Proportional opsin gene expression in developing fishes under altered light conditions. Opsin gene expression in juvenile *A. triostegus* expressed as a proportion (%) of total opsin gene expression. Time points were taken at days (D) 0, 3 and 6 of exposure to altered light treatments ($n = 5-6$; $N = 63$). Data are given as Tukey boxplots. Statistical significance compared to the age-matched 12L12D indoor control (calculated from a Kruskal-Wallis test with Dunn's multiple comparisons test): * $p < .05$; ** $p < .01$; *** $p < .001$. *rh1*, rhodopsin-like middle-wavelength sensitive 1 (rod opsin); *rh2*, rhodopsin-like middle-wavelength sensitive 2; *sws2*, short-wavelength-sensitive 2; *lws*, long-wavelength-sensitive.

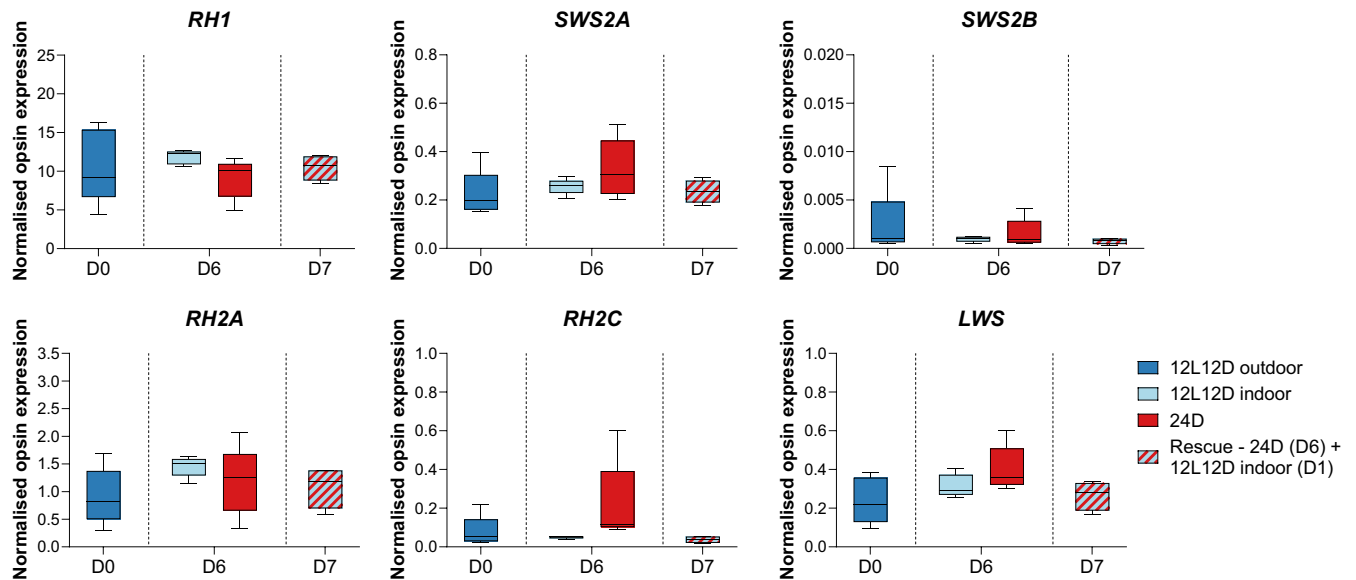


FIGURE 4 Absolute opsin gene expression in adult fishes under altered light conditions. Opsin gene expression in adult *A. triostegus* normalized to two housekeeping genes. Time points were taken at days (D) 0 and 6 of exposure to altered light conditions for single-condition exposures and day 7 for the rescue ($n = 4-5$; $N = 19$). Data are given as Tukey boxplots. Statistical significance (calculated from a Kruskal-Wallis test with Dunn's multiple comparisons test): no significance detected. *rh1*, rhodopsin-like middle-wavelength sensitive 1 (rod opsin); *rh2*, rhodopsin-like middle-wavelength sensitive 2; *sws2*, short-wavelength-sensitive 2; *lws*, long-wavelength-sensitive.

treatment that elicited the greatest changes in the juvenile visual system was used (i.e., 24D), plus the indoor control and a rescue experiment. Similar to the larvae, expression of the two housekeeping

genes used for normalization was stable across the conditions (Figure S5). Furthermore, adults expressed the same opsin gene repertoire as juveniles: the rod opsin, *rh1*, and five cone opsin genes,

sws2a, *sws2b*, *rh2a*, *rh2c* and *lws*. All of these opsin genes were expressed under each light treatment and no additional opsin genes were expressed in any treatment.

Under natural light conditions (12L12D outdoor), adults expressed four of the cone opsin genes, *sws2a*, *sws2b*, *rh2a* and *lws*, at lower absolute levels compared to juveniles (*sws2a*, *sws2b* and *lws*, $p < .01$; *rh2a*, $p < .05$) (Figure S6). Adults also expressed three of these genes (*sws2a*, *sws2b* and *lws*) at lower proportional levels (% of total) compared to the juveniles (*sws2a* and *sws2b*, $p < .05$; *lws*, $p < .01$) (Figure S7). Conversely, adults had higher proportional expression of the rod opsin, *rh1*, than juveniles (*rh1*, $p < .01$). Finally, when opsin gene expression was considered per cone type (i.e., single vs. double cones), adults expressed higher levels of *sws2a* (and lower *sws2b*) in their single cones and higher levels of *rh2a* (and lower *lws*) in their double cones compared to juveniles (*sws2a*, *sws2b*, *rh2a* and *lws*, $p < .01$) (Figure S8).

Under artificial light treatments, similar results were observed in the absolute opsin gene expression of adults compared to juveniles but on a smaller scale, showing trends rather than significant differences (Figures 4 and 5). As such, under 24D, a trend towards a slight increase in the mean absolute expression of *sws2a*, *rh2c* and *lws* was observed. Furthermore, adults also showed increased proportional expression of *sws2a* and *rh2c* (*sws2a*, $p < .05$ compared to D6 control; *rh2c*, $p < .05$ compared to D0 controls and rescue). However, in contrast to the juveniles, *rh2a* did not change absolute or proportional expression under 24D in adults. Finally, the rescue experiment

showed that the increased expression under 24D appeared to revert to levels comparable to the control (i.e., D6 - 12L12D indoor) following the rescue, although this effect only reached significance for the proportional expression of *rh2c* (Figure 5). Interestingly, the increase in *rh2c* expression under 24D and its reversion to control expression levels after the rescue was also maintained when expression was considered as a proportion of double cone opsin gene expression ($p < .05$; Figure S9). Overall, the 24h exposure to a normal light regime seemed to negate the effects of the 6-day exposure to dim light.

3.3 | Plasticity in retinal morphology in juveniles

Retinal cell densities were also assessed in juveniles (Figure 6). First, no overt signs of retinal degeneration were observed under any condition (Figure S10). Second, there was no difference between the two control treatments. Furthermore, none of the artificial light conditions altered rod cell densities. Under 12L12AL, a slight decrease in GC densities was observed in the dorsal retina at D6 ($p < .05$). However, significant density changes across multiple cell types were only observed under 24D. Under 24D, cone densities were lower in the dorsal (D3, $p < .0001$; D6, $p < .01$) and ventral retina (D3 and D6, $p < .0001$) compared to the indoor control at D3 and D6, and INL and GC densities decreased in the dorsal retina at D6 ($p < .05$).

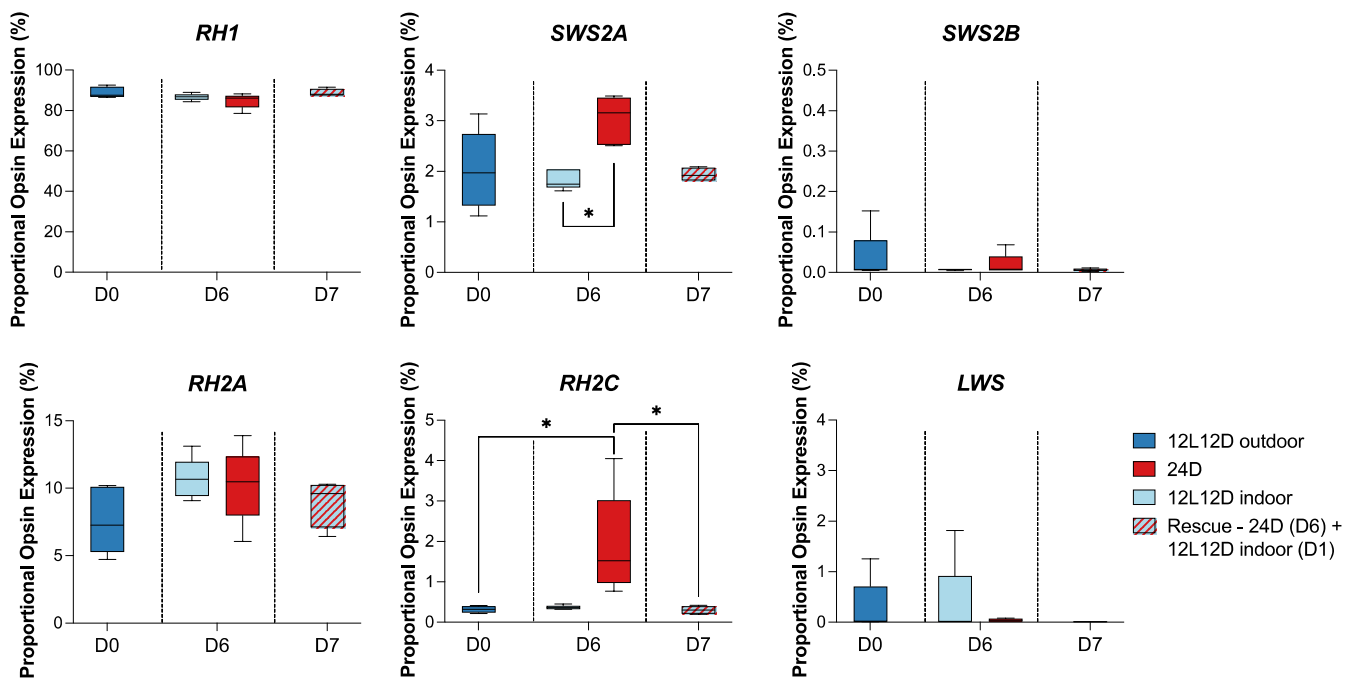
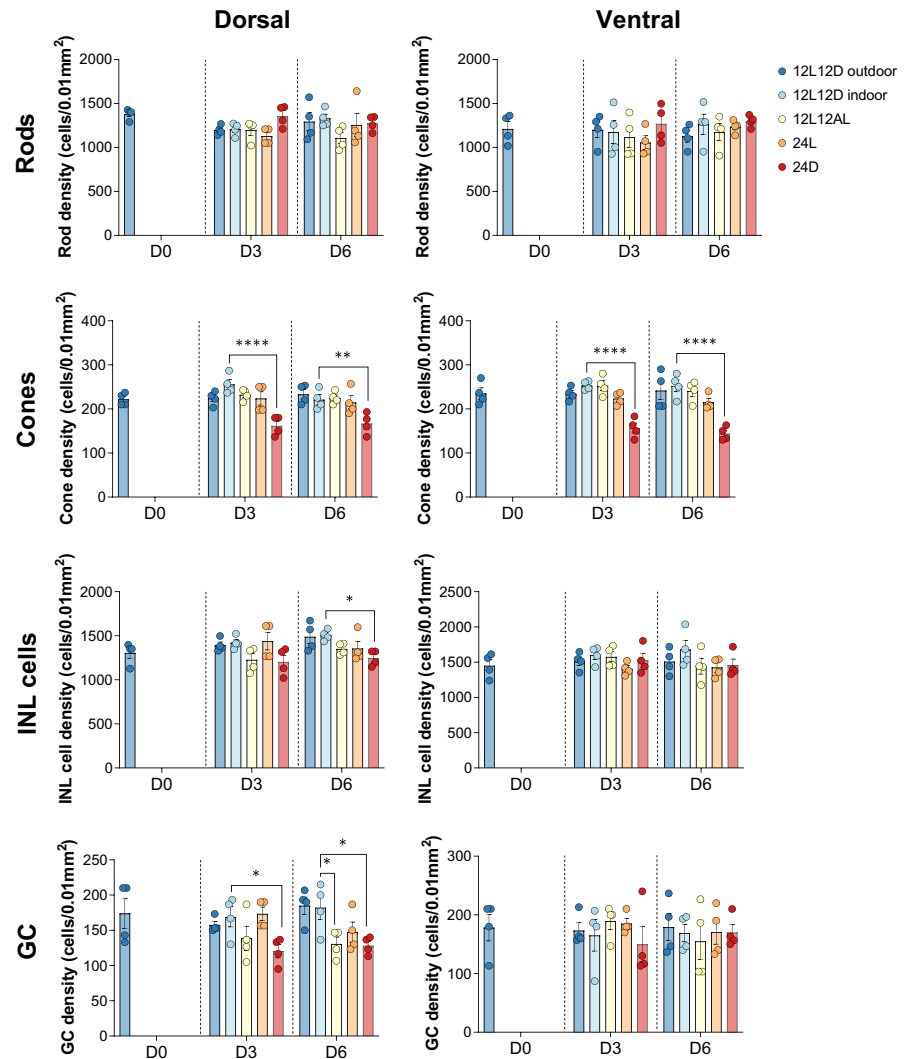


FIGURE 5 Proportional opsin gene expression in adult fishes under altered light conditions. Opsin gene expression in adult *A. triostegus* expressed as a proportion (%) of total opsin gene expression. Time points were taken at days (D) 0 and 6 of exposure to altered light conditions for single-condition exposures and day 7 for the rescue ($n = 4-5$; $N = 19$). Data are given as Tukey boxplots. Statistical significance (calculated from a Kruskal-Wallis test with Dunn's multiple comparisons test): * $p < .05$. *rh1*, rhodopsin-like middle-wavelength sensitive 1 (rod opsin); *rh2*, rhodopsin-like middle-wavelength sensitive 2; *sws2*, short-wavelength-sensitive 2; *lws*, long-wavelength-sensitive.

FIGURE 6 Retinal cell densities in developing fishes under altered light conditions. The densities of rods, cones, inner nuclear layer (INL) cells and ganglion cells (GC) in juvenile *A. triostegus*. Cell densities were quantified (as cells per 0.01 mm^2) in the dorsal and ventral retina at days (D) 0, 3 and 6 of exposure to altered light conditions ($n = 4$; $N = 44$). Data are given as bar graphs showing mean \pm s.e.m. with individual values overlaid. Statistical significance when compared to the age-matched 12L12D indoor control (calculated from a Kruskal-Wallis test with Dunn's multiple comparisons test): * $p < .05$; ** $p < .01$; **** $p < .001$.



3.4 | Body depth and survival in juveniles and adults

In both juveniles and adults, 100% survival was observed in all treatments. In juveniles, body depth decreased under both control conditions and 24D, and showed a trend towards decreasing under 12L12AL and 24L (Figure S11; Table S1). Conversely, in adults, no significant changes to body depth were observed (Figure S12; Table S1).

4 | DISCUSSION

4.1 | Ontogenetic tuning of opsin gene expression under natural light

Diurnal reef fish usually express a broad opsin gene repertoire to optimize photopic (bright light) and colour vision (Cortesi et al., 2016; Luehrmann et al., 2019; Stieb et al., 2019; reviewed in Cortesi et al., 2020). The diurnal convict surgeonfish, *A. triostegus*, is no exception, with both juveniles and adults expressing six opsins: one rod opsin (*rh1*) and five cone opsins (*sws2a*, *sws2b*, *lws*, *rh2a* and *rh2c*).

The expression of identical opsin gene repertoires at both stages is similar to findings in *N. brevirostris* (Tettamanti et al., 2019), suggesting a direct mode of development in this family. As found in *N. brevirostris*, the opsin genes are differentially expressed between life stages in *A. triostegus*. Ontogenetic changes in opsin gene expression are often related to changes in habitat and diet (Chang et al., 2020; Fogg et al., 2022a; Lupše et al., 2021; Shand et al., 2008; Tettamanti et al., 2019). Indeed, adult *A. triostegus* expresses lower absolute and relative levels of the cone opsin genes sensitive to wavelengths at the extremities of the light spectrum (i.e., *sws2b* and *lws*) compared to juveniles. This correlates well with an ontogenetic switch to a reef environment that is more restricted to mid-range (blue – green) wavelengths compared to the surface waters inhabited by most larvae (Helfman et al., 2009; Job & Bellwood, 2000).

4.2 | Visual plasticity under dim light

Several teleost fishes, including adults of a few reef species, have previously shown visual plasticity under novel light conditions (Härer et al., 2019; Karagic et al., 2018; Luehrmann et al., 2018; Wagner &

Kröger, 2005). Here, we demonstrated visual plasticity across ontogeny in a diurnal reef fish, *A. triostegus*. In our study, the strongest responses occurred under constant dim light. This may be because this diurnal species is well-adapted to seeing in photopic conditions (Besson et al., 2020) and therefore, the dimmer treatments more substantially exceed their natural visual capabilities. Before considering the nature of the visual changes under dim light, it is important to note that the two controls, which used either natural or artificial light, showed differences in opsin gene expression. This finding is congruent with other studies that used aquarium lighting and is probably due to differences in emission spectra (Hofmann et al., 2010; Luehrmann et al., 2018). However, it suggests that the responses in this study may be slightly different to what would be observed on the reef under similar conditions. Regardless, this study permits a controlled investigation of phenotypic plasticity, the nature of which can be reliably interpreted by comparison to the indoor control.

In juveniles, constant dim light induced rapid changes at both the molecular and cellular levels. As such, juveniles showed increased absolute expression of most cone opsin genes (i.e., *sws2a*, *rh2a*, *rh2c* and *lws*), increased proportional expression of *rh2a* (as well as a trend towards increased expression of *sws2a* and *lws*), and a decrease in cone, INL cell and GC densities. While increased absolute cone opsin gene expression with decreased cone densities seems contradictory, this finding is consistent with previous work in larval Midas cichlids (Karagic et al., 2018), highlighting our lack of understanding of how opsin gene expression relates to photoreceptor densities. Notably, given the rapid increase in retinal area over settlement (Shand, 1994b), the drop in cone densities found in our study is probably due to a lack of increase in the total number of cones rather than an actual loss of photoreceptor cells. Overall, constant dim light induced rapid changes at both molecular and cellular levels in the juveniles.

In adults, constant dim light induced similarly rapid changes at the molecular level. As such, adults showed a trend towards increased absolute expression of the cone opsin genes *sws2a*, *rh2c* and *lws*, increased proportional expression of *sws2a* and *rh2c*, and increased double cone expression of *rh2c*. Notably, visual plasticity was less pronounced in adults, potentially due to population differences between the two collection locations (i.e., Moorea Island for juveniles and Lizard Island for adults) or due to ongoing development in juveniles (Besson, 2017; Fogg et al., 2022a; Shand, 1997). Nevertheless, our findings are intriguing since they indicate that *A. triostegus* shows opsin gene expression plasticity in both developing and adult fishes, similar to findings in some freshwater fishes (e.g., killifish [Fuller & Claricoates, 2011; Fuller et al., 2010] and cichlids [Nandamuri, Yourick, & Carleton, 2017]). This emphasizes the need for further work on more life stages.

In both life stages, the changes induced by exposure to constant dim light may serve to maximize visual capabilities. At the cellular level, decreased investment in the photopic system (via decreased cone densities) and higher investment in scotopic vision (via increased summation due to lower INL and GC densities) in the juveniles would theoretically enhance vision in dim light (Pankhurst, 1989; Warrant, 2004). Similarly, at the molecular level,

increased cone opsin gene expression in both life stages may increase their capacity to “catch” photons at relevant wavelengths (i.e., increase their quantum catch) as suggested for other reef fishes (Luehrmann et al., 2018). Thus, the plastic changes were potentially adaptive. However, changes were largely limited to the cones, as found in damselfishes (Luehrmann et al., 2018). It is worth noting that decreased proportional *rh1* expression was observed in juveniles under dim light. However, since there were no changes to absolute *rh1* expression, this was probably just a reflection of the changes in cone opsin gene expression rather than any functionally relevant changes in *rh1* expression. The lack of substantial changes to the rods is intriguing since fishes that naturally inhabit dim-light environments generally adapt their vision via their rods (de Busserolles et al., 2021; de Busserolles & Marshall, 2017). It is possible that as an inherently diurnal species that relies more on photopic vision (Cortesi et al., 2020), *A. triostegus* may have less plasticity in its rods.

4.3 | Visual plasticity under bright light

Some teleost fishes have also shown phenotypic plasticity in the retina under increased exposure to bright light (e.g., Senegalese sole [Frau et al., 2020] and European seabass [Yan et al., 2019]). Similarly, phenotypic plasticity was found in juvenile *A. triostegus* under brighter conditions (i.e., 24L and 12L12AL). Notably, no retinal degeneration was detected in the current study, probably because it usually occurs at much higher light intensities (Vera & Migaud, 2009). Furthermore, *A. triostegus* showed little to no change in retinal cell densities under the brighter light treatments. This is not so surprising considering this diurnal fish already had well-developed photopic vision (Besson et al., 2020), negating the need for adaptation. Instead, under constant bright light, *A. triostegus* showed increased absolute expression of *sws2a* and *lws* (and a trend towards increased *rh2a* expression) as well as increased proportional expression of most of the cone opsin genes (i.e., *sws2a*, *rh2a* and *lws*). Interestingly, exposure to constant bright light also induced changes in proportional expression per cone cell type, resulting in shifts towards *sws2a* (over *sws2b*) expression and *lws* (over *rh2a* and *rh2c*) expression. Since photoreceptors undergo bleaching at higher light intensities (Dartnall et al., 1936), increased opsin gene expression may represent a compensatory mechanism to help the cones cope with higher levels of opsin turnover. The increased expression of these particular opsins (i.e., *sws2a* and *lws*) is probably linked to the irradiance of the light source. The irradiance of the artificial sunlight used in this study peaked around 450 nm (highest peak) and 650 nm (secondary peak) (Figure 1). The opsin genes with the closest peak sensitivity to these wavelengths are *sws2a* (typically 456 nm) and *lws* (typically 560 nm) (Musilova et al., 2021). Thus, constant exposure to the light source resulted in increased exposure to wavelengths that lie primarily within the sensitivity range of *sws2a* and *lws*, probably necessitating greater regeneration of these opsins. This idea is further supported by the fact that moderately increased exposure to the light source (i.e., 12L12AL) also resulted in increased expression

of *sws2a* (both absolute and proportional single cone expression), the opsin with a peak sensitivity which matched the highest peak in the irradiance of the light treatment.

4.4 | Rapid reversion of phenotypic changes

Little is known about whether the visual changes that occur under altered light conditions are dependent on ongoing exposure to the modified conditions. Previous work in zebrafish has shown that a single light-dark transition can rescue clock gene expression in the retina following exposure to constant darkness (Vuilleumier et al., 2006). However, similar studies on opsin gene expression are lacking (but see Fuller & Claricoates, 2011; Iwanicki et al., 2020). Using a rescue experiment on adults, we revealed that shifts in opsin gene expression can be rapidly reverted (within 24 h) upon return to the control light environment. This represents one of the most rapid cases of light-induced phenotypic plasticity in opsin gene expression reported to date, with previous work showing plasticity in as little as three days in killifish (Fuller & Claricoates, 2011) or a couple of hours in flounders (Iwanicki et al., 2020). Notably, since the opsin gene expression changes in this study were more pronounced in juveniles than adults, it would be interesting to conduct a similar rescue experiment on juveniles to see if the changes can also be reverted at earlier life stages. Nevertheless, this finding suggests that visual changes under altered light conditions are reversible in the adult convict surgeonfish.

4.5 | Ecological relevance

Rapid and reversible phenotypic plasticity on a short timescale is probably useful to these fish in a natural ecological context. This is because the light environment that they experience undergoes both diel and seasonal changes. For example, an overcast day can be 100 times dimmer than one with full sunlight (Gaston et al., 2013). Similarly, the duration of daylight is significantly shorter in winter compared to summer (Tseng et al., 2020). Hence, it is not so surprising that *A. triostegus* demonstrates plasticity in response to changes in photoperiod and light intensity. The reversibility of visual changes is also promising in the context of anthropogenic change. The light environment of marine fishes continues to be modified by anthropogenic factors, such as coastal development, commercial fisheries, shipping and tourism (Davies et al., 2013, 2014; Gaston et al., 2017). Therefore, the ability of the visual system to plastically adapt to an anthropogenically modified environment as well as to recover the natural phenotype upon restoration of a natural environment may prove very useful in our changing world.

4.6 | Potential mechanisms underlying phenotypic plasticity

Phenotypic plasticity under altered light conditions may be facilitated by various molecular, cellular, or physiological mechanisms.

At the physiological level, thyroid hormone signalling is known to play an important role in facilitating developmental remodelling of the retina (Houbrechts et al., 2016), including in *A. triostegus* (Besson et al., 2020). Furthermore, thyroid hormone signalling can mediate shifts in opsin gene expression under constant dim light (e.g., in cichlids Karagic et al., 2018). However, no differences in thyroid hormone levels have been found between juvenile *A. triostegus* exposed to altered light conditions compared to natural conditions (O'Connor et al., 2019). Notably, the altered light conditions in this previous study resembled our 12L12AL treatment, which produced minimal visual changes. Thus, thyroid hormone signalling may still be involved in the visual plasticity of *A. triostegus* under more significantly altered light conditions, such as constant dim light.

At the cellular level, increased opsin gene expression in *A. triostegus* could be caused by an increase in outer segment length, as observed in cichlids exposed to constant dim light (Wagner & Kröger, 2005). This mechanism may not be feasible in our study given the short timescale; however, it remains a possibility. At the molecular level, increased opsin gene expression could result from an increase in packing of the visual pigments in the cone photoreceptors. However, this may be unlikely given that the density of a visual pigment is thought to be optimized for proper functioning of the light response, so denser packing may disrupt phototransduction (Wen et al., 2009). This could potentially be circumvented by modification to the structure of the lamellae to accommodate higher opsin densities, although this has not been previously shown. Further studies using in situ hybridisation and precise measurements of outer segment size will be required to investigate the mechanism(s) underlying increased opsin gene expression.

Finally, numerous transcription factors and regulatory loci have also been shown to modify opsin gene expression (Nandamuri et al., 2018; Nandamuri, Dalton, & Carleton, 2017; Sandkam et al., 2020) and mediate morphological changes to the retina (Nelson et al., 2008; Ogawa & Corbo, 2021) in fishes. Therefore, some of these molecular mechanisms may also mediate short-term visual plasticity in *A. triostegus*. Future studies looking at differential expression across the retinal transcriptome or, more specifically, at the expression of previously characterized regulatory genes would probably yield some interesting insights.

4.7 | Conclusion

The visual system of the convict surgeonfish (*A. triostegus*) showed phenotypic plasticity across ontogeny, with changes more pronounced in juveniles than adults. These plastic changes were potentially adaptive. For example, changes under dim light may increase visual sensitivity, while those under bright light may facilitate increased opsin turnover. However, plasticity was somewhat constrained to light environments which were extremely different to what the fish would naturally experience. Moreover, a rescue experiment on adults showed that shifts in opsin gene expression were rapidly reversible. These findings enhance our understanding of the capacity of marine fishes to respond to both natural and

anthropogenic changes to their environment. This work also brings new questions to light. First, it remains unknown whether the plastic changes would be maintained or would be more pronounced under long-term exposure. For example, would long-term exposure to constant dim light result in a diurnal fish with well-developed scotopic vision? Similarly, although previous studies have suggested interspecific variability in plastic responses (Hofmann et al., 2010), whether the response varies with a species' ecology (e.g., diurnal vs. nocturnal) remains unknown. Finally, the mechanisms underlying phenotypic plasticity require further investigation. Thus, future work is required to examine visual plasticity and its underlying mechanisms in a greater breadth of species and over different timeframes.

AUTHOR CONTRIBUTIONS

Lily G. Fogg, Fanny de Busserolles, N. Justin Marshall and Fabio Cortesi designed the study; Lily G. Fogg, David Lecchini, Camille Gache and Fabio Cortesi collected the animals; Lily G. Fogg conducted experiments and collected and analysed the data; Fanny de Busserolles and Fabio Cortesi aided data interpretation; Lily G. Fogg wrote the initial manuscript. All authors contributed to writing of the manuscript and approved the final version.

ACKNOWLEDGEMENTS

We acknowledge the Dinggaal, Ngurrungu and Thanhil peoples as traditional owners of the lands and waters of the Lizard Island region from where specimens were collected. We acknowledge the Turrbal/Jagera people as the traditional owners of the land on which the University of Queensland (UQ) is situated. We thank the staff at LIRS and the CRIOBE for support during fieldwork and Abigail Shaughnessy for assistance with catching fish. We thank Robert Sullivan from the Queensland Brain Institute (QBI) Histology Facility and Rumelo Amor from the QBI Advanced Microscopy facility for technical support and advice. We thank the staff at Novogene for library preparation and RNA sequencing. This research was supported by an Australian Research Council DECRA (DE180100949) awarded to F.d.B. F.d.B., F.C. and N.J.M. were supported by the ARC (DE180100949, DE200100620 and FL140100197, respectively); L.G.F. was supported by the Australian Government and UQ [Research Training Program Stipend] and QBI (Research Higher Degree Top Up Scholarship); D.L. was supported by the Institute of Coral Reefs of the Pacific (IRCP). Open access publishing facilitated by The University of Queensland, as part of the Wiley - The University of Queensland agreement via the Council of Australian University Librarians.

CONFLICT OF INTEREST

The authors have no conflict of interest to declare.

DATA AVAILABILITY STATEMENT

Newly identified sequenced and sequenced transcriptomes are available through GenBank and the SRA archive (see Table S2 for accession numbers). All other data are available through the UQ eSpace

at <https://doi.org/10.48610/aafb371> (Fogg & de Busserolles, 2022) or are provided in the main manuscript or Supporting Information.

ORCID

Lily G. Fogg  <https://orcid.org/0000-0002-5378-8781>

Fabio Cortesi  <https://orcid.org/0000-0002-7518-6159>

N. Justin Marshall  <https://orcid.org/0000-0001-9006-6713>

Fanny de Busserolles  <https://orcid.org/0000-0002-4602-9840>

REFERENCES

- Abitia, A., Moreno-Sánchez, X., Palacios-Salgado, D., & Escobar-Sánchez, O. (2011). Feeding habits of the convict surgeonfish *Acanthurus triostegus* (Teleostei: Acanthuridae) in the los Frailes reef, BCS, Mexico. *Aqua, International Journal of Ichthyology*, 17, 121–126.
- Afgan, E., Baker, D., Batut, B., van den Beek, M., Bouvier, D., Čech, M., Chilton, J., Clements, D., Coraor, N., Grüning, B. A., Guerler, A., Hillman-Jackson, J., Hiltemann, S., Jalili, V., Rasche, H., Soranzo, N., Goecks, J., Taylor, J., Nekrutenko, A., & Blankenberg, D. (2018). The galaxy platform for accessible, reproducible and collaborative biomedical analyses: 2018 update. *Nucleic Acids Research*, 46(W1), W537–W544.
- Baden, T., & Osorio, D. (2019). The retinal basis of vertebrate color vision. *Annual Review of Vision Science*, 5, 177–200.
- Bernardos, R. L., Barthel, L. K., Meyers, J. R., & Raymond, P. A. (2007). Late-stage neuronal progenitors in the retina are radial Muller glia that function as retinal stem cells. *The Journal of Neuroscience*, 27(26), 7028–7040.
- Besson, M. (2017). *Importance of metamorphosis in coral-reef fish larval recruitment facing anthropogenic pressures*. PSL Research University 2017PSLEP024.
- Besson, M., Feeney, W. E., Moniz, I., François, L., Brooker, R. M., Holzer, G., Metian, M., Roux, N., Laudet, V., & Lecchini, D. (2020). Anthropogenic stressors impact fish sensory development and survival via thyroid disruption. *Nature Communications*, 11(1), 3614.
- Besson, M., Gache, C., Brooker, R. M., Moussa, R. M., Waqalevu, V. P., LeRohellec, M., Jaouen, V., Peyrusse, K., Berthe, C., Bertucci, F., Jacob, H., Brié, C., Wan, B., Galzin, R., & Lecchini, D. (2017). Consistency in the supply of larval fishes among coral reefs in French Polynesia. *PLoS One*, 12(6), e0178795.
- Bowmaker, J. K. (2008). Evolution of vertebrate visual pigments. *Vision Research*, 48(20), 2022–2041.
- Carleton, K. L., Escobar-Camacho, D., Stieb, S. M., Cortesi, F., & Marshall, N. J. (2020). Seeing the rainbow: Mechanisms underlying spectral sensitivity in teleost fishes. *The Journal of Experimental Biology*, 223(8), jeb193334.
- Chang, C.-H., Wang, Y.-C., Shao, Y. T., & Liu, S.-H. (2020). Phylogenetic analysis and ontogenetic changes in the cone opsins of the western mosquitofish (*Gambusia affinis*). *PLoS One*, 15(10), e0240313.
- Collin, S. P. (1997). Specialisations of the teleost visual system: Adaptive diversity from shallow-water to deep-sea. *Acta Physiologica Scandinavica. Supplementum*, 638, 5–24.
- Collin, S. P., & Shand, J. (2003). Retinal sampling and the visual field in fishes. In S. P. Collin & N. J. Marshall (Eds.), *Sensory processing in aquatic environments* (pp. 139–169). Springer New York.
- Cortesi, F., Mitchell, L. J., Tettamanti, V., Fogg, L. G., de Busserolles, F., Cheney, K. L., & Marshall, N. J. (2020). Visual system diversity in coral reef fishes. *Seminars in Cell & Developmental Biology*, 106, 31–42.
- Cortesi, F., Musilová, Z., Stieb, S. M., Hart, N. S., Siebeck, U. E., Cheney, K. L., Salzburger, W., & Marshall, N. J. (2016). From crypsis to mimicry: Changes in colour and the configuration of the visual system during ontogenetic habitat transitions in a coral reef fish. *Journal of Experimental Biology*, 219, 2545–2558.

- Cortesi, F., Musilová, Z., Stieb, S. M., Hart, N. S., Siebeck, U. E., Malmström, M., Tørresen, O. K., Jentoft, S., Cheney, K. L., Marshall, N. J., Carleton, K. L., & Salzburger, W. (2015). Ancestral duplications and highly dynamic opsin gene evolution in percomorph fishes. *Proceedings of the National Academy of Sciences of the United States of America*, 112(5), 1493–1498.
- Cortesi, F., Stieb, S. S., Tettamanti, V., Cheney, K. L., & Marshall, N. J. (2018). *How dory finds her friends*. Paper presented at the International Congress of Neuroethology, Brisbane, Australia.
- Dalton, B. E., Lu, J., Leips, J., Cronin, T. W., & Carleton, K. L. (2015). Variable light environments induce plastic spectral tuning by regional opsin coexpression in the African cichlid fish, *Metriacrima zebra*. *Molecular Ecology*, 24(16), 4193–4204.
- Dartnall, H. J. A., Goodeve, C. F., Lythgoe, R. J., & Hill, A. V. (1936). The quantitative analysis of the photochemical bleaching of visual purple solutions in monochromatic light. *Proceedings of the Royal Society of London. Series A - Mathematical and Physical Sciences*, 156(887), 158–170.
- Davies, T. W., Bennie, J., Inger, R., & Gaston, K. J. (2013). Artificial light alters natural regimes of night-time sky brightness. *Scientific Reports*, 3, 1722.
- Davies, T. W., Duffy, J. P., Bennie, J., & Gaston, K. J. (2014). The nature, extent, and ecological implications of marine light pollution. *Frontiers in Ecology and the Environment*, 12(6), 347–355.
- de Busserolles, F., Cortesi, F., Fogg, L., Stieb, S. M., Luehrmann, M., & Marshall, N. J. (2021). The visual ecology of Holocentridae, a nocturnal coral reef fish family with a deep-sea-like multibank retina. *The Journal of Experimental Biology*, 224(1), jeb233098.
- de Busserolles, F., Cortesi, F., Helvik, J. V., Davies, W. I. L., Templin, R. M., Sullivan, R. K. P., Michell, C. T., Mountford, J. K., Collin, S. P., Irigoien, X., Kaartvedt, S., & Marshall, J. (2017). Pushing the limits of photoreception in twilight conditions: The rod-like cone retina of the deep-sea pearlshades. *Science Advances*, 3(11), eaao4709.
- de Busserolles, F., Fogg, L., Cortesi, F., & Marshall, J. (2020). The exceptional diversity of visual adaptations in deep-sea teleost fishes. *Seminars in Cell & Developmental Biology*, 106, 20–30.
- de Busserolles, F., & Marshall, N. J. (2017). Seeing in the deep-sea: Visual adaptations in lanternfishes. *Philosophical Transactions of the Royal Society of London. Series B, Biological Sciences*, 372, eaao4709. <https://doi.org/10.1098/rstb.2016.0070>
- Douglas, R. H., Hunt, D. M., & Bowmaker, J. K. (2003). Spectral sensitivity tuning in the Deep-Sea. In S. P. Collin & N. J. Marshall (Eds.), *Sensory processing in aquatic environments* (pp. 323–342). Springer New York.
- Douglas, R. H., & Partridge, J. C. (1997). On the visual pigments of deep-sea fish. *Journal of Fish Biology*, 50(1), 68–85.
- Evans, B. I., & Fernald, R. D. (1993). Retinal transformation at metamorphosis in the winter flounder (*Pseudopleuronectes americanus*). *Visual Neuroscience*, 10(6), 1055–1064.
- Fogg, L., & de Busserolles, F. (2022). *Data from: Developing and adult reef fish show rapid, reversible light-induced plasticity in their visual system*. The University of Queensland eSpace.
- Fogg, L. G., Cortesi, F., Lecchini, D., Gache, C., Marshall, N. J., & de Busserolles, F. (2022a). Development of dim-light vision in the nocturnal reef fish family Holocentridae I: Retinal gene expression. *Journal of Experimental Biology*, 225(17), jeb244740.
- Fogg, L. G., Cortesi, F., Lecchini, D., Gache, C., Marshall, N. J., & de Busserolles, F. (2022b). Development of dim-light vision in the nocturnal reef fish family Holocentridae II: Retinal morphology. *Journal of Experimental Biology*, 225(17), jeb244513.
- Frau, S., Loentgen, G., Martín-Robles, Á. J., & Muñoz-Cueto, J. A. (2020). Ontogenetic expression rhythms of visual opsins in senegalese sole are modulated by photoperiod and light spectrum. *Journal of Comparative Physiology B-Biochemical Systems and Environmental Physiology*, 190(2), 185–204.
- Frédérich, B., Colleye, O., Lepoint, G., & Lecchini, D. (2012). Mismatch between shape changes and ecological shifts during the post-settlement growth of the surgeonfish, *Acanthurus triostegus*. *Frontiers in Zoology*, 9(1), 8.
- Froese, R., & Pauly, D. (Eds.). (2022). *FishBase*. World Wide Web electronic publication. www.fishbase.org, version (06/2022).
- Fuller, R. C., Carleton, K. L., Fadool, J. M., Spady, T. C., & Travis, J. (2005). Genetic and environmental variation in the visual properties of bluefin killifish, *Lucania goodei*. *Journal of Evolutionary Biology*, 18(3), 516–523.
- Fuller, R. C., & Claricoates, K. M. (2011). Rapid light-induced shifts in opsin expression: Finding new opsins, discerning mechanisms of change, and implications for visual sensitivity. *Molecular Ecology*, 20(16), 3321–3335.
- Fuller, R. C., Noa, L. A., & Strellner, R. S. (2010). Teasing apart the many effects of lighting environment on opsin expression and foraging preference in bluefin killifish. *The American Naturalist*, 176(1), 1–13.
- Gaston, K. J., Bennie, J., Davies, T. W., & Hopkins, J. (2013). The ecological impacts of nighttime light pollution: A mechanistic appraisal. *Biological Reviews of the Cambridge Philosophical Society*, 88(4), 912–927.
- Gaston, K. J., Davies, T. W., Nedelec, S. L., & Holt, L. A. (2017). Impacts of artificial light at night on biological timings. *Annual Review of Ecology, Evolution, and Systematics*, 48(1), 49–68.
- Ghasemi, A., & Zahediasl, S. (2012). Normality tests for statistical analysis: A guide for non-statisticians. *International Journal of Endocrinology and Metabolism*, 10(2), 486–489.
- Härer, A., Karagic, N., Meyer, A., & Torres-Dowdall, J. (2019). Reverting ontogeny: Rapid phenotypic plasticity of colour vision in cichlid fish. *Royal Society Open Science*, 6(7), 190841.
- Härer, A., Torres-Dowdall, J., & Meyer, A. (2017). Rapid adaptation to a novel light environment: The importance of ontogeny and phenotypic plasticity in shaping the visual system of Nicaraguan Midas cichlid fish (*Amphilophus citrinellus* spp.). *Molecular Ecology*, 26(20), 5582–5593.
- Helfman, G., Collette, B. B., Facey, D. E., & Bowen, B. W. (2009). *The diversity of fishes: Biology, evolution, and ecology* (2nd ed.). John Wiley & Sons.
- Hofmann, C. M., O'Quin, K. E., Smith, A. R., & Carleton, K. L. (2010). Plasticity of opsin gene expression in cichlids from Lake Malawi. *Molecular Ecology*, 19(10), 2064–2074.
- Houbrechts, A. M., Vergauwen, L., Bağcı, E., Van Houcke, J., Heijlen, M., Kulemeka, B., Hyde, D. R., Knäpen, D., & Darras, V. M. (2016). Deiodinase knockdown affects zebrafish eye development at the level of gene expression, morphology and function. *Molecular and Cellular Endocrinology*, 424, 81–93.
- Irazábal-González, L., Wright, D. S., & Maan, M. (2021). Developmental and environmental plasticity in opsin gene expression in Lake Victoria cichlid fish. *bioRxiv* 2021.2009.2001.458542.
- Iwanicki, T., Haman, C., Liu, A., & Taylor, J. S. (2020). Light induced changes in starry flounder (*Platichthys stellatus*) opsin expression and its influence on vision estimated from a camouflage-based behavioural assay. *bioRxiv* 2020.2007.2030.228627.
- Job, S. D., & Bellwood, D. R. (2000). Light sensitivity in larval fishes: Implications for vertical zonation in the pelagic zone. *Limnology and Oceanography Bulletin*, 45, 362–371.
- Karagic, N., Harer, A., Meyer, A., & Torres-Dowdall, J. (2018). Heterochronic opsin expression due to early light deprivation results in drastically shifted visual sensitivity in a cichlid fish: Possible role of thyroid hormone signaling. *Journal of Experimental Zoology. Part B, Molecular and Developmental Evolution*, 330(4), 202–214.
- Kranz, A. M., Forgan, L. G., Cole, G. L., & Endler, J. A. (2018). Light environment change induces differential expression of guppy opsins

- in a multi-generational evolution experiment. *Evolution*, 72(8), 1656–1676.
- Lamb, T. D. (2013). Evolution of phototransduction, vertebrate photoreceptors and retina. *Progress in Retinal and Eye Research*, 36, 52–119.
- Lecchini, D., Dufour, V., Carleton, J., Strand, S., & Galzin, R. (2004). Estimating the patch size of larval fishes during colonization on coral reefs. *Journal of Fish Biology*, 65(4), 1142–1146.
- Luehrmann, M., Carleton, K. L., Cortesi, F., Cheney, K. L., & Marshall, N. J. (2019). Cardinalfishes (Apogonidae) show visual system adaptations typical of nocturnally and diurnally active fish. *Molecular Ecology*, 28(12), 3025–3041.
- Luehrmann, M., Stieb, S. M., Carleton, K. L., Pietzker, A., Cheney, K. L., & Marshall, N. J. (2018). Short term colour vision plasticity on the reef: Changes in opsin expression under varying light conditions differ between ecologically distinct reef fish species. *The Journal of Experimental Biology*, 221, jeb.175281.
- Lupše, N., Cortesi, F., Freese, M., Marohn, L., Pohlmann, J.-D., Wysujack, K., Hanel, R., & Musilova, Z. (2021). Visual gene expression reveals a cone-to-rod developmental progression in Deep-Sea fishes. *Molecular Biology and Evolution*, 38(12), 5664–5677.
- Lythgoe, J. N. (1979). *The ecology of vision*. Clarendon Press.
- Lythgoe, J. N., Muntz, W. R. A., Partridge, J. C., Shand, J., & Williams, D. M. (1994). The ecology of the visual pigments of snappers (Lutjanidae) on the great barrier reef. *Journal of Comparative Physiology A*, 174(4), 461–467.
- Marshall, J., Carleton, K. L., & Cronin, T. (2015). Colour vision in marine organisms. *Current Opinion in Neurobiology*, 34, 86–94.
- Marshall, N. J., Cortesi, F., de Busserolles, F., Siebeck, U. E., & Cheney, K. L. (2019). Colours and colour vision in reef fishes: Past, present and future research directions. *Journal of Fish Biology*, 95(1), 5–38.
- McCormick, M. I. (1999). Delayed metamorphosis of a tropical reef fish (*Acanthurus triostegus*): A field experiment. *Marine Ecology Progress Series*, 176, 25–38.
- McCormick, M. I., Makey, L., & Dufour, V. (2002). Comparative study of metamorphosis in tropical reef fishes. *Marine Biology*, 141(5), 841–853.
- Musilova, Z., Salzburger, W., & Cortesi, F. (2021). The visual opsin gene repertoires of teleost fishes: Evolution, ecology, and function. *Annual Review of Cell and Developmental Biology*, 37(1), 441–468.
- Nandamuri, S. P., Conte, M. A., & Carleton, K. L. (2018). Multiple trans QTL and one cis-regulatory deletion are associated with the differential expression of cone opsins in African cichlids. *BMC Genomics*, 19(1), 945.
- Nandamuri, S. P., Dalton, B. E., & Carleton, K. L. (2017). Determination of the genetic architecture underlying short wavelength sensitivity in Lake Malawi cichlids. *The Journal of Heredity*, 108(4), 379–390.
- Nandamuri, S. P., Yourick, M. R., & Carleton, K. L. (2017). Adult plasticity in African cichlids: Rapid changes in opsin expression in response to environmental light differences. *Molecular Ecology*, 26(21), 6036–6052.
- Nelson, S. M., Frey, R. A., Wardwell, S. L., & Stenkamp, D. L. (2008). The developmental sequence of gene expression within the rod photoreceptor lineage in embryonic zebrafish. *Developmental Dynamics*, 237(10), 2903–2917.
- O'Connor, J. J., Fobert, E. K., Besson, M., Jacob, H., & Lecchini, D. (2019). Live fast, die young: Behavioural and physiological impacts of light pollution on a marine fish during larval recruitment. *Marine Pollution Bulletin*, 146, 908–914.
- Ogawa, Y., & Corbo, J. C. (2021). Partitioning of gene expression among zebrafish photoreceptor subtypes. *Scientific Reports*, 11(1), 17340.
- Pankhurst, N. W. (1987). Intra- and interspecific changes in retinal morphology among mesopelagic and demersal teleosts from the slope waters of New Zealand. *Environmental Biology of Fishes*, 19(4), 269–280.
- Pankhurst, N. W. (1989). The relationship of ocular morphology to feeding modes and activity periods in shallow marine teleosts from New Zealand. *Environmental Biology of Fishes*, 26(3), 201–211.
- Randall, J. E. (1961). Contribution to the biology of the convict surgeonfish of the Hawaiian islands, *Acanthurus triostegus sandvicensis*. *Pacific Science*, 15(2), 215–272.
- Sandkam, B. A., Campello, L., O'Brien, C., Nandamuri, S. P., Gammerding, W. J., Conte, M. A., Swaroop, A., & Carleton, K. L. (2020). Tbx2a modulates switching of RH2 and LWS opsin gene expression. *Molecular Biology and Evolution*, 37(7), 2002–2014.
- Schindelin, J., Arganda-Carreras, I., Frise, E., Kaynig, V., Longair, M., Pietzsch, T., Preibisch, S., Rueden, C., Saalfeld, S., Schmid, B., Tinevez, J.-Y., White, D. J., Hartenstein, V., Eliceiri, K., Tomancak, P., & Cardona, A. (2012). Fiji: An open-source platform for biological-image analysis. *Nature Methods*, 9, 676–682.
- Schweikert, L. E., Caves, E. M., Solie, S. E., Sutton, T. T., & Johnsen, S. (2018). Variation in rod spectral sensitivity of fishes is best predicted by habitat and depth. *Journal of Fish Biology*, 95(1), 179–185.
- Schweikert, L. E., Fitak, R. R., Caves, E. M., Sutton, T. T., & Johnsen, S. (2018). Spectral sensitivity in ray-finned fishes: Diversity, ecology, and shared descent. *The Journal of Experimental Biology*, 221, jeb.189761.
- Shand, J. (1994a). Changes in retinal structure during development and settlement of the goatfish *Upeneus tragula*. *Brain, Behavior and Evolution*, 43(1), 51–60.
- Shand, J. (1994b). *Changes in the visual system of teleost fishes during growth and settlement: An ecological perspective*. (Doctoral Dissertation). James Cook University.
- Shand, J. (1997). Ontogenetic changes in retinal structure and visual acuity: A comparative study of coral-reef teleosts with differing post-settlement lifestyles. *Environmental Biology of Fishes*, 49(3), 307–322.
- Shand, J., Chin, S. M., Harman, A. M., Moore, S., & Collin, S. P. (2000). Variability in the location of the retinal ganglion cell area centralis is correlated with ontogenetic changes in feeding behavior in the black bream, *Acanthopagrus butcheri* (Sparidae, teleostei). *Brain, Behavior and Evolution*, 55(4), 176–190.
- Shand, J., Davies, W. L., Thomas, N., Balmer, L., Cowing, J. A., Pointer, M., Carvalho, L. S., Trezise, A. E., Collin, S. P., Beazley, L. D., & Hunt, D. M. (2008). The influence of ontogeny and light environment on the expression of visual pigment opsins in the retina of the black bream, *Acanthopagrus butcheri*. *The Journal of Experimental Biology*, 211(Pt 9), 1495–1503.
- Shimmura, T., Nakayama, T., Shinomiya, A., Fukamachi, S., Yasugi, M., Watanabe, E., Shimo, T., Senga, T., Nishimura, T., Tanaka, M., Kamei, Y., Naruse, K., & Yoshimura, T. (2017). Dynamic plasticity in phototransduction regulates seasonal changes in color perception. *Nature Communications*, 8(1), 412.
- Siebeck, U. E., & Marshall, N. J. (2007). Potential ultraviolet vision in pre-settlement larvae and settled reef fish - A comparison across 23 families. *Vision Research*, 47(17), 2337–2352.
- Stieb, S., de Busserolles, F., Carleton, K., Cortesi, F., Chung, W.-S., Dalton, B., Hammond, L. A., & Marshall, N. (2019). A detailed investigation of the visual system and visual ecology of the barrier reef anemonefish, *Amphiprion akindynos*. *Scientific Reports*, 9, 16459.
- Stieb, S. M., Carleton, K. L., Cortesi, F., Marshall, N. J., & Salzburger, W. (2016). Depth-dependent plasticity in opsin gene expression varies between damselfish (Pomacentridae) species. *Molecular Ecology*, 25(15), 3645–3661.
- Tettamanti, V., de Busserolles, F., Lecchini, D., Marshall, J., & Cortesi, F. (2019). Visual system development of the spotted unicornfish, *Naso brevirostris* (Acanthuridae). *Journal of Experimental Biology*, 222(24), 691774.
- Tseng, H.-C., You, W.-L., Huang, W., Chung, C.-C., Tsai, A.-Y., Chen, T.-Y., Lan, K. W., & Gong, G.-C. (2020). Seasonal variations of marine

- environment and primary production in the Taiwan Strait. *Frontiers in Marine Science*, 7, 38. <https://doi.org/10.3389/fmars.2020.00038>
- Vera, L. M., & Migaud, H. (2009). Continuous high light intensity can induce retinal degeneration in Atlantic salmon, Atlantic cod and European sea bass. *Aquaculture*, 296(1), 150–158.
- Vuilleumier, R., Besseau, L., Boeuf, G., Piparelli, A. I., Gothilf, Y., Gehring, W. G., Klein, D. C., & Falcón, J. (2006). Starting the zebrafish pineal circadian clock with a single photic transition. *Endocrinology*, 147(5), 2273–2279.
- Wagner, H.-J., & Kröger, R. H. H. (2005). Adaptive plasticity during the development of colour vision. *Progress in Retinal and Eye Research*, 24(4), 521–536.
- Walls, G. L. (1942). The vertebrate eye and its adaptive radiation. *Cranbrook Institute of Science*, 19(xiv), 785.
- Warrant, E. (2004). Vision in the dimmest habitats on earth. *Journal of Comparative Physiology. A, Neuroethology, Sensory, Neural, and Behavioral Physiology*, 190(10), 765–789.
- Warrant, E. J. (1999). Seeing better at night: Life style, eye design and the optimum strategy of spatial and temporal summation. *Vision Research*, 39(9), 1611–1630.
- Wen, X.-H., Shen, L., Brush, R. S., Michaud, N., Al-Ubaidi, M. R., Gurevich, V. V., Hamm, H. E., Lem, J., DiBenedetto, E., Anderson, R. E., & Makino, C. L. (2009). Overexpression of rhodopsin alters the structure and Photoresponse of rod photoreceptors. *Biophysical Journal*, 96(3), 939–950.
- Wright, D. S., van Eijk, R., Schuart, L., Seehausen, O., Groothuis, T. G. G., & Maan, M. E. (2020). Testing sensory drive speciation in cichlid fish: Linking light conditions to opsin expression, opsin genotype and female mate preference. *Journal of Evolutionary Biology*, 33(4), 422–434.
- Yan, H., Liu, Q., Shen, X., Liu, W., Cui, X., Hu, P., Yuan, Z., Zhang, L., Song, C., Liu, L., & Liu, Y. (2019). Effects of different light conditions on the retinal microstructure and ultrastructure of *Dicentrarchus labrax* larvae. *Fish Physiology and Biochemistry*, 46, 613–628.
- Yoshimatsu, T., Schröder, C., Nevala, N. E., Berens, P., & Baden, T. (2020). Fovea-like photoreceptor specializations underlie single UV cone driven prey-capture behavior in zebrafish. *Neuron*, 107(2), 320–337. e326.
- Yourick, M. R., Sandkam, B. A., Gammerdinger, W. J., Escobar-Camacho, D., Nandamuri, S. P., Clark, F. E., Joyce, B., Conte, M. A., Kocher, T. D., & Carleton, K. L. (2019). Diurnal variation in opsin expression and common housekeeping genes necessitates comprehensive normalization methods for quantitative real-time PCR analyses. *Molecular Ecology Resources*, 19(6), 1447–1460.

SUPPORTING INFORMATION

Additional supporting information can be found online in the Supporting Information section at the end of this article.

How to cite this article: Fogg, L. G., Cortesi, F., Gache, C., Lecchini, D., Marshall, N. J., & de Busserolles, F. (2023). Developing and adult reef fish show rapid light-induced plasticity in their visual system. *Molecular Ecology*, 32, 167–181. <https://doi.org/10.1111/mec.16744>